

Thermal Imaging Camera

Industry temperature measurement

ThermalTronix

TT-6T-HTI Series

High resolution, portable

Rotatable LCD



With advanced high resolution FPA detector and powerful integrated digital circuits as well as DSP image processing system, TT-6T-HTI series handhold thermal imaging camera stably performs high quality image, accurate temperature results. It is developed for variety requirements of instant infrared troubleshooting in fields such as electric, electronic, firefighting and building detection.

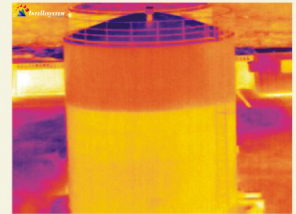
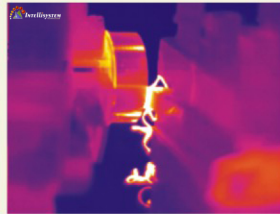


Color Warning



Voice Alarm

40 seconds of digital voice per image stored with image



LCD 90 degree rotatable



Laser Pointer

Manual focus

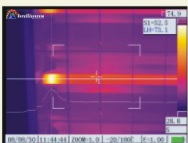


Power connector

USB port

SD card

Audio/Video Output



Line measurement



Area measurement



Optional Lenses

Parameter

Item		TT-P6T-HTI	TT-S6T-HTI
Detector characteristics	Detector type	Uncooled FPA microbolometer	
	Array size/format	384×288	
Image characteristics	Field of view/min focus distance	16°×12°/0.5m	
	Spatial resolution (IFOV)	0.88mrad	
	Thermal sensitivity	≤0.06°C@30°C	
	Frame rate	50/60Hz	
	Focus	Manual	
	Electronic zoom	2X	N/A
Image display	Spectral range	8-14μm	
	LCD	Built-in high-resolution color 2.8" LCD	
Measurement	Temperature ranges	-20°C- +350°C, optional up to +600°C	
	Accuracy	± 2 °C or ± 2% of reading, whichever is greater	
	Measurement correction	Automatic/manual	
	Measurement mode	Up to 4 movable spots. Up to 3 movable areas (maximum, minimum and average temperatures). Line profile. Isotherm. Temperature difference. Alarm(voice, color)	
	Color palette	11	
	Image adjustment	Auto/manual gain and brightness	
	Setup functions	Date/time, temperature unit, language	
	Emissivity correction	Variable from 0.01 to 1.0	
	Ambient temperature correction	Automatic corrections according to user input	
	Atmospheric transmission correction	Automatic correction according to user input object distance, relative humidity, ambient temperature	
Image storage	Storage card	Built-in flash memory, SD card (1G), Up to 4000 images	
	Storage mode	Automatic/manual single image saving	
	File format-thermal	JPEG, 14 bit thermal image with measurement data	
	Voice annotation	Input via built-in microphone Up to 40 seconds of digital voice per image stored with image	
Laser pointer	Laser pointer	Class 2, 1mw/635nm(red)	
Power supply	Battery type	Li-Ion, rechargeable	
	Battery operating time	3 hours continuous operation	
	Charging system	Intelligent charger or power supply adaptor(optional) online charge	
	Power saving	YES	
	External power	10-15V DC	
Environment	Operating temperature	-15°C - +50°C	
	Humidity	≤90%non-condensing	
	Encapsulation	IP54	
Physical characteristics	Weight	0.91Kg	
	Dimensions	303mm×123mm×85mm	
Interface	External DC input	Yes	
	Audio output	Yes	
	Video output	PAL/NTSC	
	SD card	Yes	
	USB	Image, measurement data and voice transfer to PC	

▲ The information contained in this document is subject to change without notice