



Thermal Imaging Camera

Industry temperature measurement

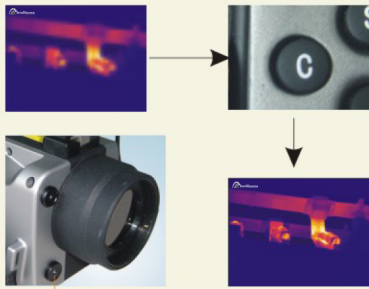
ThermalTronix

TT-1700ELD-PLUS-HTI

384x288 uncooled FPA detector

Auto focus, dual storage, full sreen CCD





CCD Camera

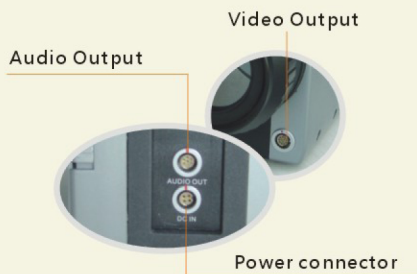
Auto focus



One button operation



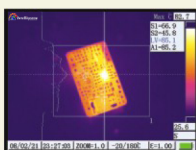
Optional LCD remote units



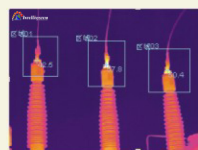
Audio Output

Video Output

Power connector



Line measurement



Area measurement



TT-1700ELD-PLUS-HTI offers outstanding image quality and temperature measurement performance in an affordable, rugged and easy to use infrared camera. It works as a professional tool effective in different applications such as power plant, petro chemicals, scientific research, fire fighting, and building inspection, metallurgy, etc.



Parameter

Item	TT-1700ELD-PLUS-HTI
Detector characteristics	Detector type: Uncooled FPA microbolometer Array size/format: 384x288
Image characteristics	Field of view/min focus distance: 16°x12°/0.5m Spatial resolution (IFOV) : 0.88mrad Thermal sensitivity: ≤0.06°C@30°C Frame rate: 50/60Hz Focus: Auto/electronic focus Electronic zoom: 1- 8X continuous Spectral range: 8- 14µm Built-in visual camera: 300,000 pixels, Pic. in Pic. or full
Image display	Viewfinder: Built-in high-resolution color LCD LCD: High-resolution color LCD, 640x480
Measurement	Temperature ranges: -20°C- +600°C, optional up to +1200°C Accuracy: ± 2 °C or ± 2% of reading, Whichever is greater Measurement correction: Automatic/manual Measurement mode: Up to 10 movable spots. Up to 5 movable areas (maximum, minimum and average temperatures). Line profile. Isotherm. Temperature difference. Alarm(voice, color) Color palette: 9 palettes changeable (Iron, Rainbow, Grey and Grey inverted, etc.) Image adjustment: Auto/manual gain and brightness Setup functions: Date/time, temperature unit, language Emissivity correction: Variable from 0.01 to 1.0 or select from listings in pre-defined material list Ambient temperature correction: Automatic corrections according to user input Atmospheric transmission correction: Automatic correction according to user input object distance, relative humidity , ambient temperature
Image storage	Storage card: Built-in flash memory, CF card (1G), Up to 4000 images Storage mode: Automatic/manual single image saving File format-thermal: JPEG, 14 bit thermal image with measurement data File format-visual: JPEG or linked with corresponding thermal image(Pic. in Pic.) Voice annotation: Input via built-in microphone Up to 40 seconds of digital voice per image stored with image Image improvement: Averaging(S2, S4, S8, S16), Spatial filter
Laser pointer	Laser pointer: Class 2, 1mw/635nm(red)
Power supply	Battery type: Li-Ion, rechargeable Battery operating time: 2 hours continuous operation Charging system: Intelligent charger or power supply adaptor(optional) online charge Power saving: YES External power: 10- 15V DC
Environment	Operating temperature: -15°C- + 50°C Humidity: ≤90%non-condensing Encapsulation: IP54
Physical characteristics	Weight: 1.69Kg Dimensions: 305mmx130mmx135mm
Interface	External DC input: Yes Audio output: Yes Video output: PAL/NTSC/ VGA USB: Image (thermal and visual), measurement data and voice transfer to PC