

320 Watts Single Output with active PFC

IT-EMC-320PFC Series



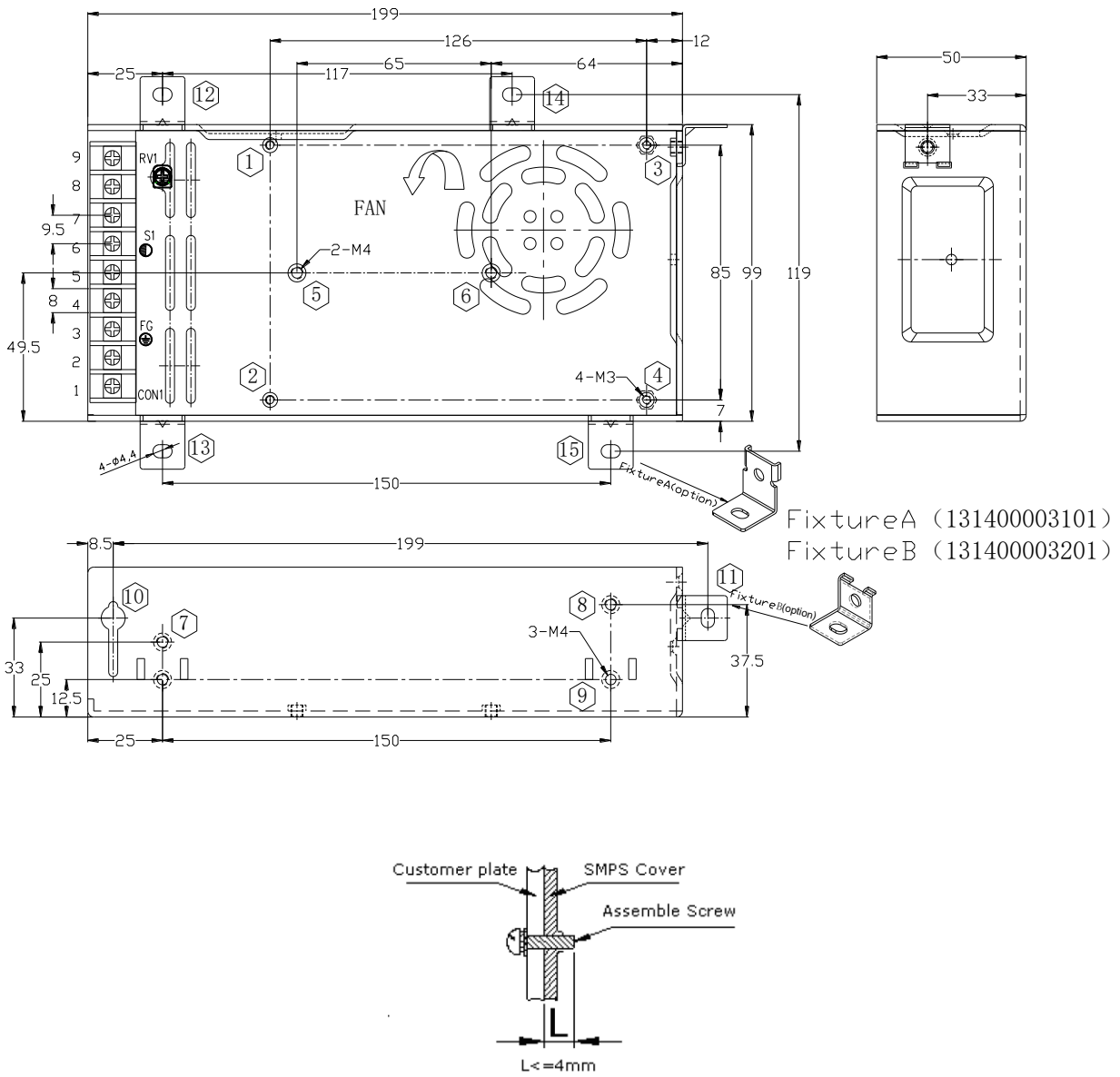
FEATURES:

- Universal AC input (90~264Vac)
- Built-in active PFC, PF>0.95
- Withstand 300Vac surge input for 5 sec
- High efficiency, long life and high reliability
- Output protection: SCP/OLP/OPP
- Wide operating ambient temperature (-20~65°C)
- Operating altitude up to 5000m
- PCB soldering side with conformal coating
- All using 105 °C long life electrolytic capacitor
- 100% full load burn-in test
- Built-in cooling fan speed control
- 3 years warranty

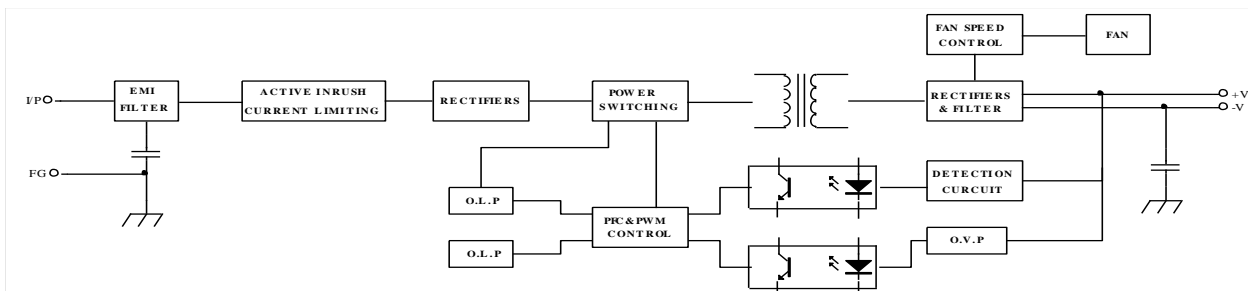
SPECIFICATION

MODEL	IT-EMC-320PFC	-12II	-24II	-36II	-48II	
OUTPUT	DC Output	12V	24V	36V	48V	
	Rated Current	25A	13A	8.9A	6.7A	
	Current Range	Note 1 0~25A	0~13A	0~8.9A	0~6.7A	
	Ripple and Noise Note 2	0~65C	≤200mV	≤150mV	≤200mV	≤150mV
		-20~0C	≤250mV	≤200mV	≤200mV	≤200mV
	Voltage ADJ. Range	10~15V	20~27V	32~40V	42~53V	
	Voltage Accuracy	±2.0%		±1.0%		
	Line Regulation	±0.5%				
	Load Regulation	±2.0%		±1.0%		
	Set-up Time	≤2S (230VAC input, Full load); ≤4S (120VAC input, Full load)				
	Hold up Time	≥10mS (120/230Vac input, Full load)				
	Temperature Coefficient	±0.03%/°C				
INPUT	Voltage Range	90Vac~264Vac, 120Vdc~370Vdc				
	Frequency Range	47Hz~63Hz				
	Power Factor(Typical)	PF>0.98/120VAC PF>0.95/230VAC				
	Efficiency (Typical) @ 230Vac	≥84.5%	≥87%	≥86.5%	≥87.5%	
	AC Current (max.)	< 4.5A				
	Inrush Current (Typical)	<50A@220Vac <30A@110Vac Cold start				
	Leakage Current	Input—output: ≤0.25mA Input—PG: ≤3.5mA (input 264Vac, 63Hz)				
PROTECTION	Over Load	27~35A	14.5~19A	9.345~13.35A	7.3~10A	
		Protection type: Hiccup mode, auto recovery				
	Over power	324~420W	358~456W	336~480W	350~180W	
ENVIRONMENT	Operating amb. Temp. & Hum.	-20°C~65°C; 20%~90%RH No condensing(refer to the derating curve)				
	Storage Temp. & Hum.	-40°C~85°C; 10%~95%RH No condensing				
	Vibration	10 ~ 500Hz, 2G 10min./1cycle, period for 60min. each along X,Y, Z axes				
SAFETY & EMC (Note 3)	Safety Standards	UL60950-1 2 nd Ed; IEC 60950-1:2005(2 nd Ed) ;EN60950-1:2006				
	Withstand Voltage	Primary-Secondary: 3.0KVac/10mA .Primary-PG: 1.5KVac/10mA. Secondary-PG: 0.5KVdc/10mA.				
	Isolation Resistance	10M ohms				
	EMI Conduction & Radiation	Compliance to EN55022, EN55024, FCC PART 15 Class B				
	EMS Immunity	Compliance to EN61000-4-2,3,4,5,6,8,11;				
OTHERS	MTBF (MIL-HDBK-217F)	More than 200,000Hrs (25°C, Full load)				
	Dimension (L*W*H)	199x99x50mm				
	Packing	12PCS/CTN, 11.6KGS, 0.04CBM				
	Cooling method	Cooling by forced air (built-in DC fan)				
NOTE	1. All parameters NOT specially mentioned are measured at rated input, rated load and 25°C of ambient temperature. 2. Measured at 20MHz of bandwidth by using a 12" twisted pair-wire terminated with a 0.1 uF & 47uF parallel capacitor.					

■ Mechanical Specification Unit:mm

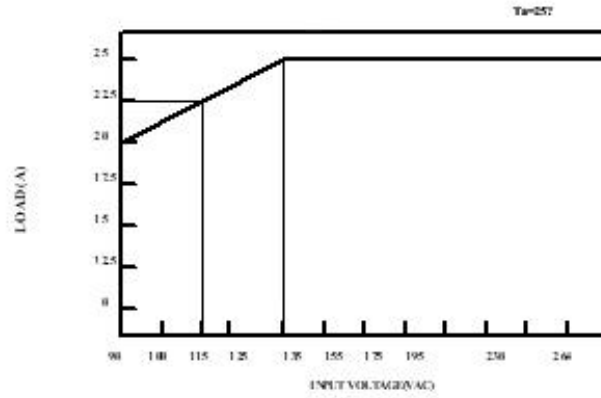
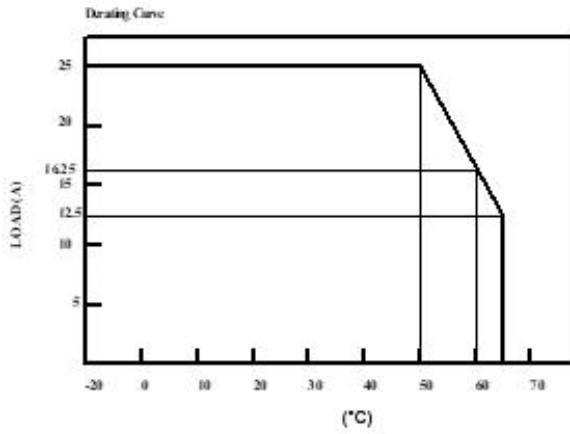


■ Block Diagram

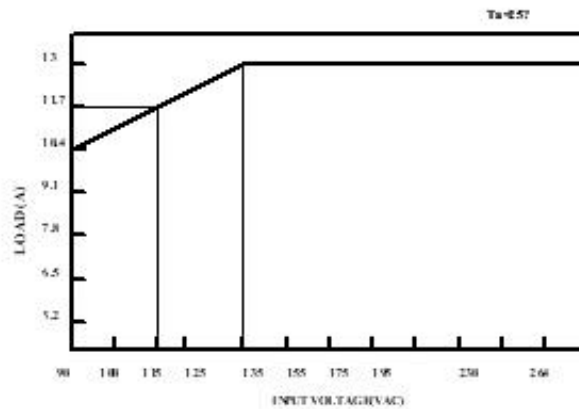
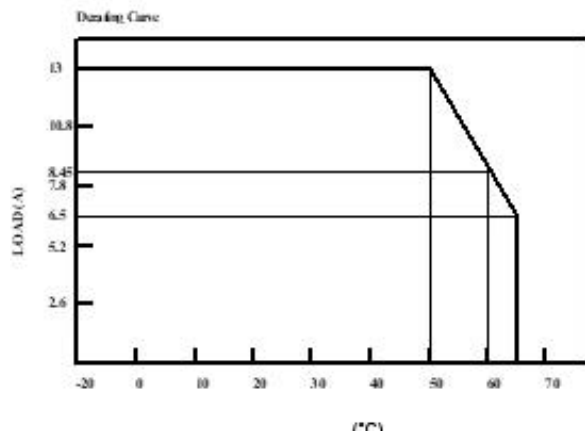


Derating Curve

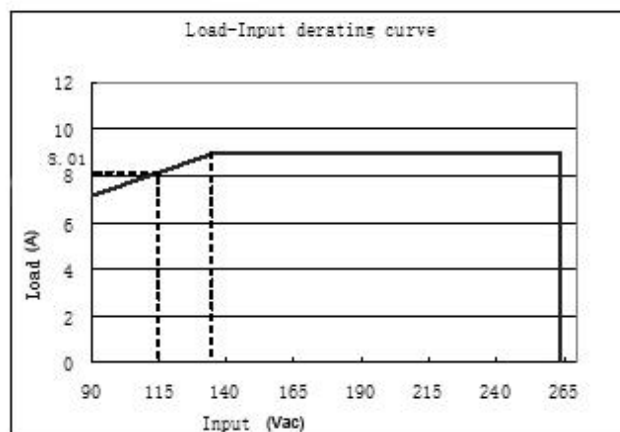
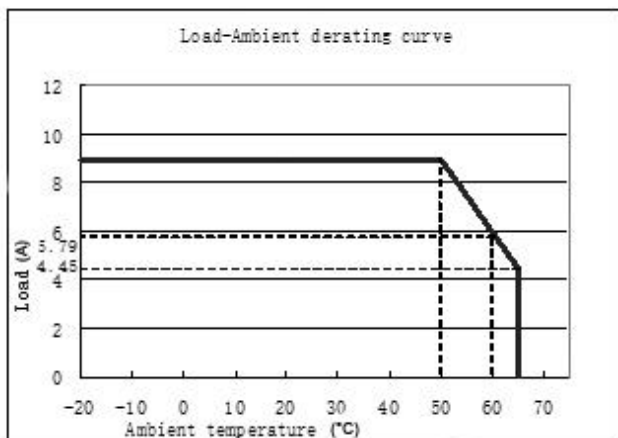
IT-EMC-320PFC-12II:



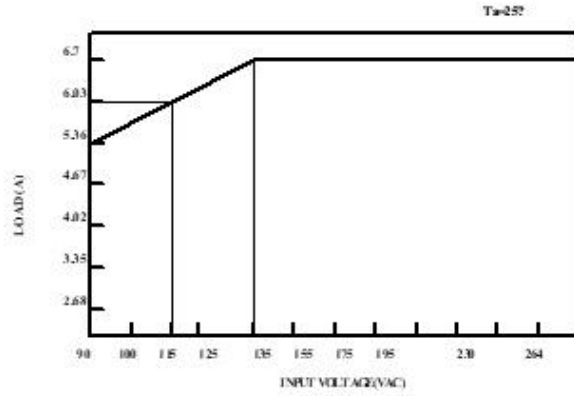
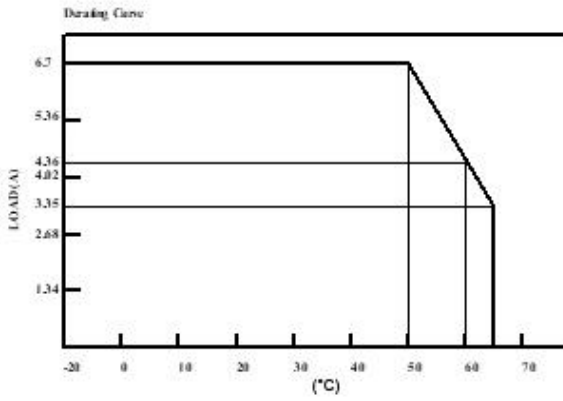
IT-EMC-320PFC-24II:



IT-EMC-320PFC-36II:



IT-EMC-320PFC-48II:



All products, product specifications and data are subject to change without notice.