

# IT-SS100LM-IRL

✓ *Array Zoom Laser Module*

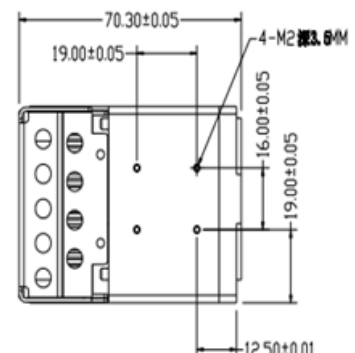
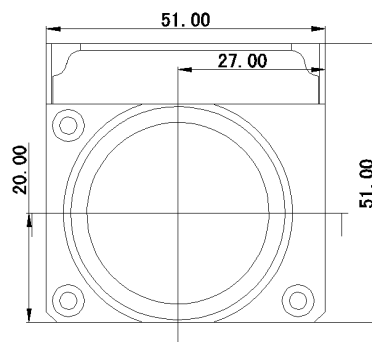


## Features

- Adopt with auto surface emitting laser chip (VCSEL), zero light attenuation
- Wide range of working temperature, good adaptability to the environment
- Surface emitting chip offers safer operation
- Evenly spot provided by array lighting
- Photoelectric conversion efficiency up to 40%
- Under 50°C working temperature, photoelectric conversion efficiency up to 35%
- Auto zooming, 240 or step-less optical zoom
- 500m face recognition, 1000m object recognition
- Reliable with life span more than 50000hrs
- Small in size, easy to integrate
- RS232, RS485, TTL ports options
- Coaxial lens focus, sync. with camera
- Homogenized light spot with no noise
- Power lose memories
- CE proved
- Preset position
- Low heating, high efficiency

## Applications

- Highway monitoring system
- PTZ monitoring system
- Ports
- Forest Fire Prevention
- Infrared imaging
- Military application



## Description

This laser illuminator is high performance integrated with high quality laser chip and excellent optics design, and outstanding circuit control with high efficiency. It has big beam angle zooming, which can match the field view angle of cameras. It also has friendly interfaces such as operating voltage, communication protocol and installation schematic. It can be widely used in high-speed dome, PTZ camera and traffic monitoring.

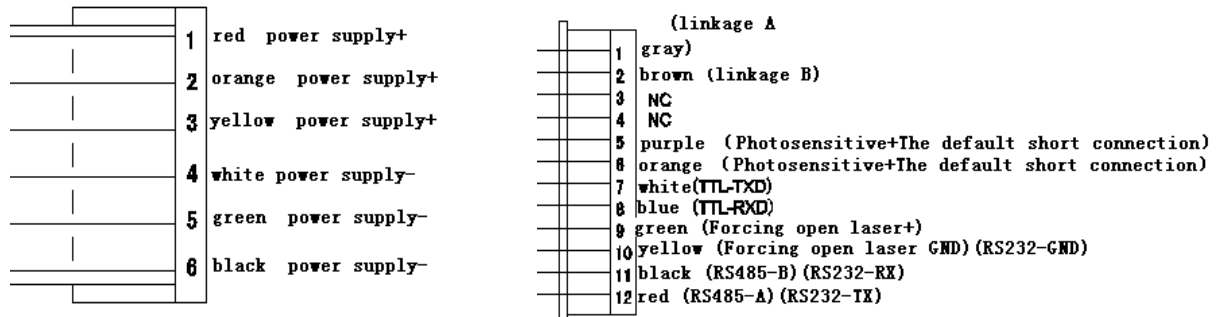
This illuminator is compatible with major lens and cameras, integrated with the protocols such as Pelco P&D, Sony VISCA protocol. It is easy for users to implement the illuminator. Simultaneously, Position can be preset via serial port, and users can call the instruction to operate conveniently in use.

## Performance Parameters

Parameter	Parameter Value	Unit	Remar
Model	IT-SS100LM-IRL	-	-
Laser Mode	Multi-mode	-	-
Wavelength	808±10	nm	options
Optical Power	3	w	laser
Beam Shape	Round	-	-
IR Distance	1000	m	-
Beam Spot Uniformity	Homogenized light spot without noise	-	-
Illumination Angle	1.3-60	degree	-
Operating Voltage	12	V	-
Operating Current	1.2	A	-
Service Life	50000	h	-
Operating Temperature	-40- +70	°C	-
Storage Temperature	-40- +85	°C	-
Power Consumption	15	w	-
Dimension	L70xW51xH51	mm	-
Material	Aluminium alloy	-	-
Color	Black	-	-
Laser Protection Class	1M	-	-
Control Wire Define	See Interface Definition Diagram(12PIN)	-	-
Power Wire +	Red, Orange, Yellow (6PIN)	-	-
Power Wire -	White, Green, Black (6PIN)	-	-
Communication Interface	RS232/RS422/RS485/TTL	-	-
Communication Protocol	Pelco-D/SONY VISCA	-	-
Baud Rate	9600		set up
Surface Treatment	Sandblasting black oxide	-	-
Total Weight	300	g	-

Cooling Method	Forced wind cooling	-	-
----------------	---------------------	---	---

## Interface Definition Diagram



## Laser Safety Instruction

According to GB7247.1-2012 or IEC60825-1:2007 standard, the safety level of this product is Class 1M/2.

## Application Photos



All products, product specifications and data are subject to change without notice.