

## IT-SD6XPOE-WL

*With 6 high power LEDs for a total power consumption of 11W, beam angle 15° to 90°, beam distance 60m to 8m, the IT-SD6XPOE-WL is a high service of life POE Camera Housing with built-in White Light Illuminator.*



- Luminous flux 600lm.
- PoE (Power over Ethernet).
- 30.000 hours lifetime LEDs.
- Extended working temperature range -20 to 50°C.
- 1-2 years warranty.

## Product Family

The IT-SD6XPOE-WL is part of the High-Power Camera Housing POE with built-in White Light Illuminator series that is the quality LED light source solution for night-time illumination, providing high-power light for CCTV and IP cameras to enhance night-time visual performance with colorful images.

## Product Features

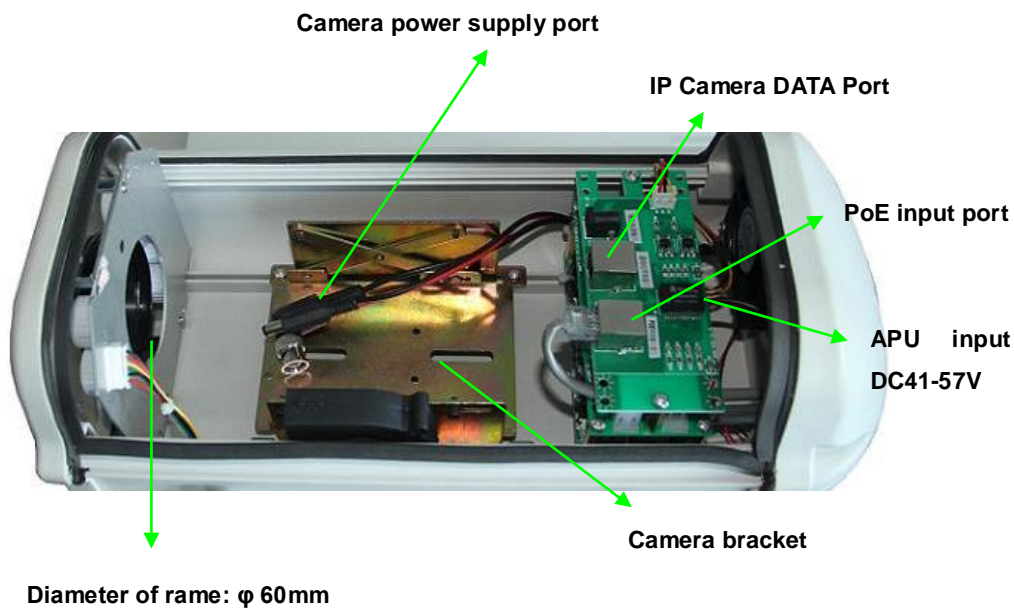
- Accurate constant circuit drive develops excellent performance.
- Using high power LEDs to guarantee high efficacy and long service life.
- Full light for night vision camera.
- Indoor/outdoor use.
- Easy installation.

## Maintenance

1. Cut off power before maintenance.
2. Clean the glass regular to get better transmission of light.
3. Clean the housing to get well heat dissipation performance.
4. Clean by dry dishcloth, don't use water or strong corrosive solution.

## Camera Installation and Functions

### 1. Internal picture



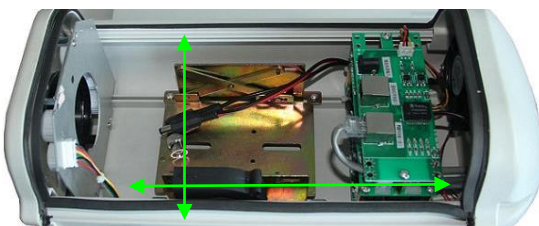
### 2. Camera installation

- Put on the camera on the lift and tilt, adjust the height of camera and fix the screws.
- Connect the power cable of IP camera to Camera Power Supply Port, it's supplied with DC12V (Default) or AC24V or AC220V optional.
- Connect the DATA cable of IP camera to the DATA Port.
- Connect the PoE Input Port to PoE power supply.
- If the IP Camera has only one cable for both PoE/DATA, then connect it to another PoE power supply.
- APU Input DC41-57V is in case that no PoE power supply is available; power this housing with DC41-57V power can turn it on.

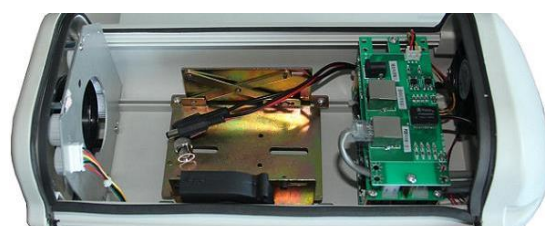
### 3. Dimensions of inside camera

**Width: 80mm**

**Frame to top of LED board (Vertical height): 35mm**



**Length: 280mm**



**Frame to lift (Vertical height): 8mm**

## Camera Housing Installation

- The product includes fragile parts. Take care on every transportation steps and hold carefully, do not stress!
- Ensure operating voltage and current are proper before installation.
- Install the product on the holder by fixing the mount hold with screws directly.
- Adjust the angle of product by loosening screws on bracket.
- Link power wires tightly and make it waterproof to avoid electric shock.
- Connect with extra power wire should make it waterproof at the same.
- The outlet of power wire should be installed downward.
- Don't use against any fire precaution rules during operation.
- Installation requested professional operation and qualified personnel.
- Connect our sales person if you need additional parts for installation.

## Technical Specifications

**LED type:** 6 pieces 2W High Power White Light LEDs

**Color temperature:** Cool white, warm white

**Luminous flux:** 600lm

**Beam angle:** 15° - 90°

**Viewing distance:** 60m - 8m

**Day & Night switch:** Auto

**Working voltage:** IEEE 802.3af PoE

**Power consumption:** 11W (LED)

**Cable:** Cat.5e 45cm (1.4 ft.)

**Output:** DC12V 1A

**Panel:** Tempered glass panel

**Housing:** Aluminum die casting housing

**Bracket:** Mount bracket

**Working temperature:** -20°C to + 50°C (-50°C to +50°C with heater)

**Protection level:** IP65

**Color:** White

**Net weight:** 4 kg

**Gross weight:** 4.5 kg

**Packing dimensions:** 480\*176\*155mm

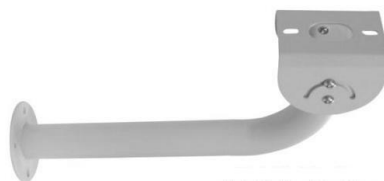
### Bracket (optional)

**Material:** Aluminum Alloy

**Size:** 360\*90\*90mm

**Net weight:** 0.4 kg

**Gross weight:** 0.7 kg



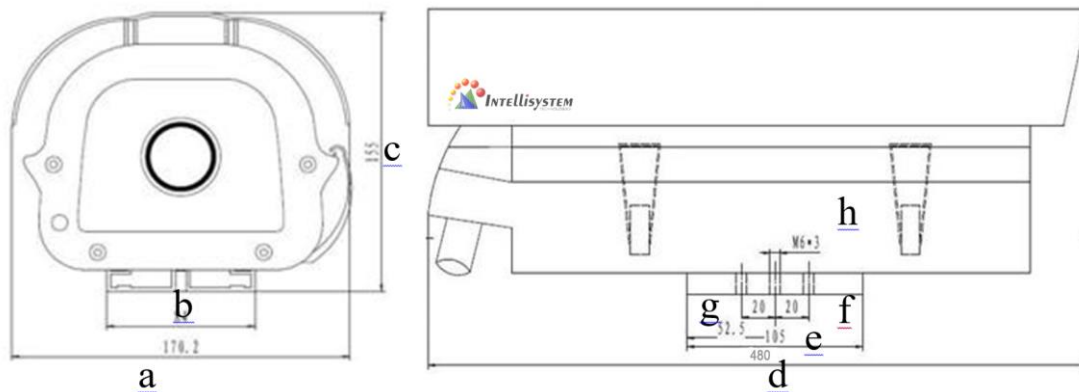
## Models for Selection

Model	Beam angle	Viewing distance
IT-SD6XPOE-WL-15-W	15°	60m
IT-SD6XPOE-WL-30-W	30°	35m
IT-SD6XPOE-WL-45-W	45°	25m
IT-SD6XPOE-WL-60-W	60°	15m
IT-SD6XPOE-WL-90-W	90°	8m

*\*White light distance is tested by SONY 1/3" CCD Camera.*

To achieve the distance needed, please pay attention to your camera specifications and lens before purchase. It is normal phenomenon that distance may vary due to different cameras and lens.

## Mechanical Drawings



a: 172mm    b: 84mm    c: 155mm  
d: 480mm    e: 105mm    f: 20mm  
g: 20mm    h: 6mm

## Viewing Picture at Night



With white light



Without white light