



Video Server IT404

Quick Installation Guide

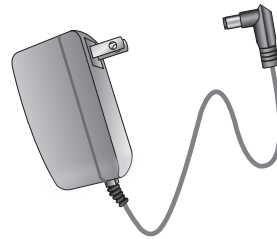
This guide describes the basic functions of IT404. All detailed information is described in the user's manual.

1 Check if the following contents are included in the package...

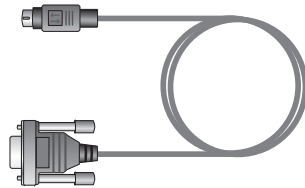
● **IT404**



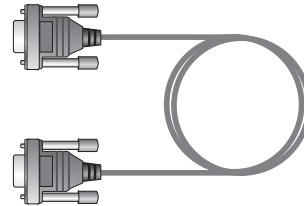
● **Power adapter**



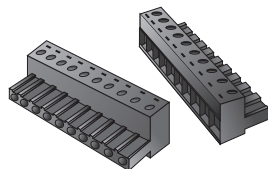
● **Camera control cable**



● **Null modem cable**



● **Two I/O terminal block connectors**



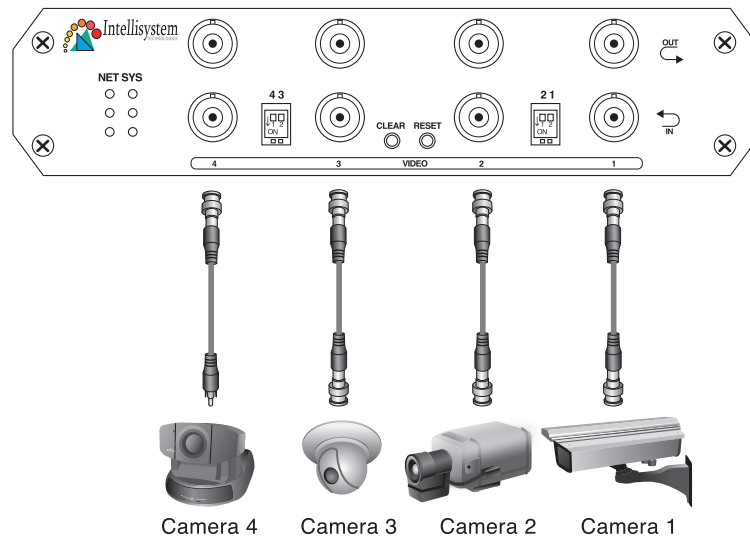
● **Utility CD ROM**



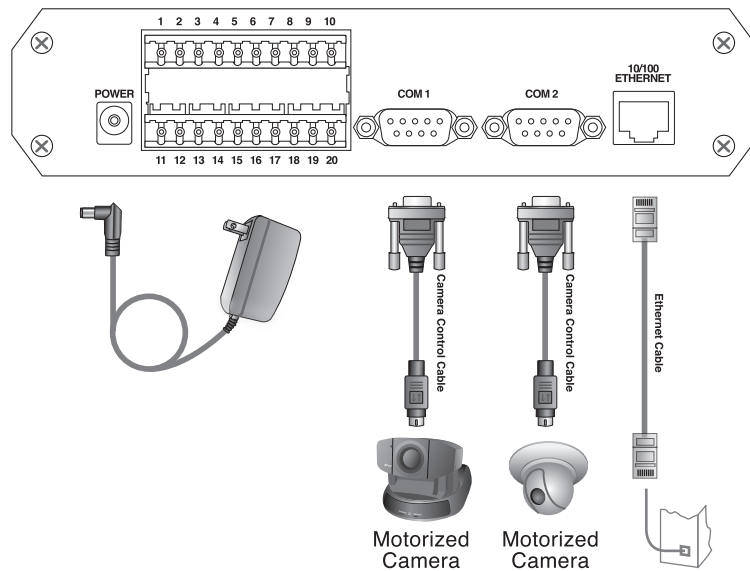
● **Warranty card**

2 If you have Ethernet card

● Front Panel

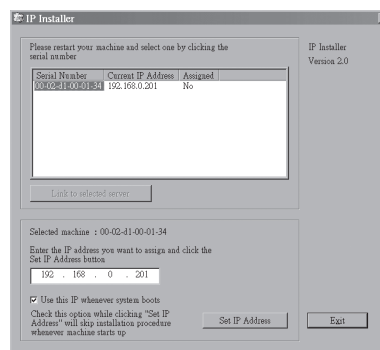


● Rear Panel



- Step 1** Note the serial number on the label of IT404 .
- Step 2** Connect video cable and/or control cable of camera to IT404 starting from VIDEO1.
- Step 3** Connect IT404 to Ethernet through CAT-5 UTP cable.
- Step 4** Connect power adapter and wait for both lowest LED in SYS column to stay light off.
- Step 5** For easy way in Microsoft Windows, run installer.exe and go to **step6** . For command mode, go to **Step8** .

- Step 6** Click on the serial number that matches the one you just note. Assign a free IP address in the edit box below and click on "Set IP address". Note that IP address shown in the right figure is an example and may not suit for your use. The IP address shown in "Current IP Address" field comes from DHCP server or previous one. Check the option under IP address box if you want IT404 to keep the IP and need no installation afterwards.



- Step 7** After progress, click on "OK" to confirm. Go to **Step9** .

- Step 8** In command prompt or console use ARP and PING as the following sequence. Installation is done as soon as PING is answered.

```
arp-s <free IP address> <Ethernet address>
ping <free IP address>
```

For example, if 192.168.0.100 is free to use and serial number of IT404 is 0002D1010203,

Microsoft Windows

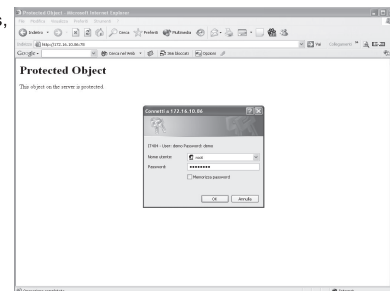
Open a DOS command window and type as follows,
 arp-s 192.168.0.100 00-02-D1-01-02-03
 ping 192.168.0.100

UNIX/Linux

In console, type as follows,
 arp-s 192.168.0.100 00:02:D1:01:02:03
 ping 192.168.0.100

- Step 9** Open web browser to connect to the assigned IP address.

- Step 10** For initial usage, type in oot as user name and serial number as password. Note the alphabets in serial number should be capital. Click OK to enter.



At the initial access to the "Connection Type" page, the web browser will ask for a new plug-in installation, the plug in being Network Camera. This plug-in has been registered for certification and can be used to change the parameters at the client's site. The user may click on to install the plug-in. If the web browser does not allow the user to complete the installation, check the Internet security in order to set on your web browser to "Ask confirmation for download ActiveX control without electronic Signature" and so refresh the current web page. If the problem persist please contact your IT or networking supervisor.

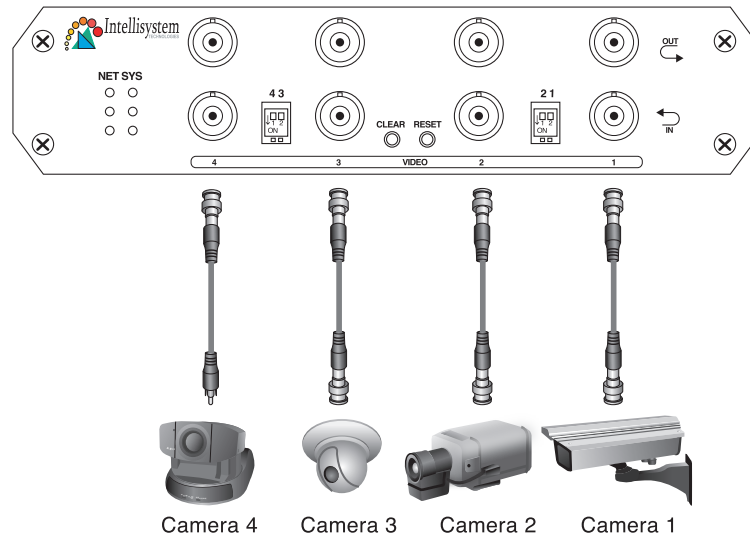
* Review network settings in configuration page for correct operation. That may be subject to your network environment. * Remember to change the password in system configuration first for security.

After entering the main page, refer to the user manual for further information is strongly advised.

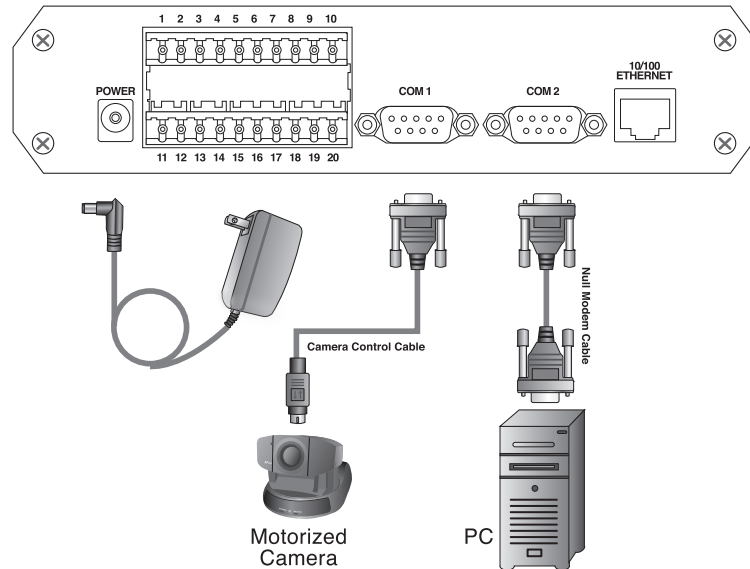
Intellisystem Technologies - <http://www.intellisystem.it>

3 If you have only Modem

● Front Panel



● Rear Panel



Intellisystem Technologies - <http://www.intellisystem.it>

Step 1 Note the serial number on the label of IT404 .

Step 2 Connect video cable and/or control cable of camera to IT404 starting from VIDEO1.

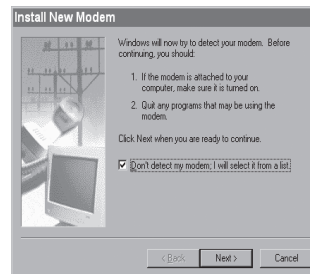
Step 3 Connect IT404 to PC or Notebook through the included null modem cable.

Step 4 Connect power adapter and wait for both lowest LED in SYS column to stay light on.

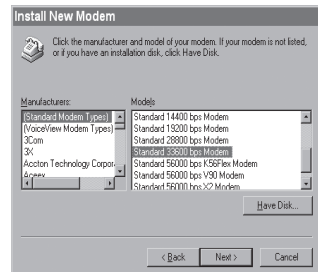
Step 5 Open the control panel and double click the Modems icon.



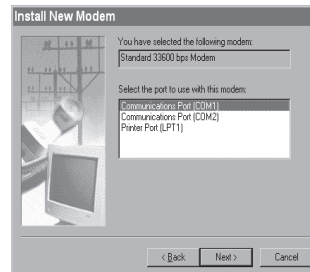
Step 6 Check "Don't detect my modem....." item and click **Next >** to install a new modem.



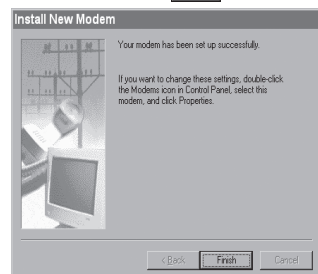
Step 7 From (Standard Modem Types) choose Standard 33600 bps Modem and click **Next >** .



Step 8 Choose the serial port that the included null modem cable is attached and click **Next >** .



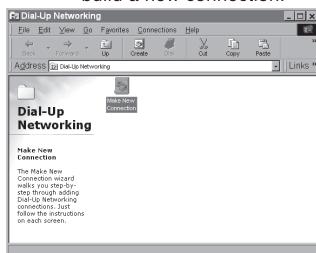
Step 9 Now the null modem is ready for use. Click **Finish** to close wizard.



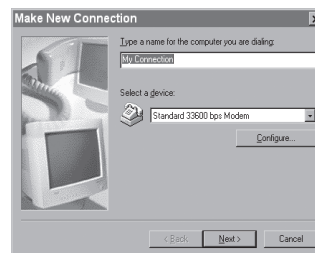
Step 10 If no Dial-Up adapter exists in the system, Windows will automatically prompt to install.



Step 11 After the 33600 bps modem is installed, open the Dial-Up Networking folder in Windows to build a new connection.



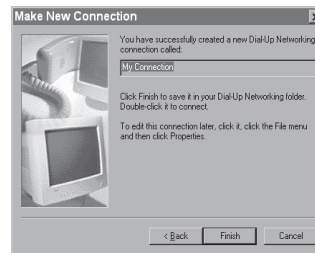
Step 12 Select the device as the newly installed standard 33600 bps modem and click on **Next**.



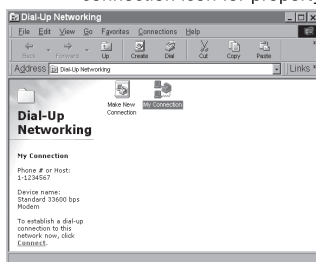
Step 13 Just enter arbitrary digits as phone number and click on **Next**. The phone number used here is not important.



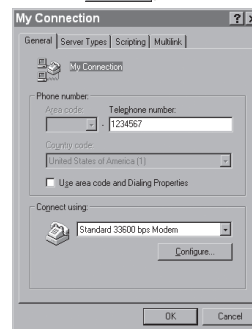
Step 14 After clicking on **Finish**, this new connection will display in the Dial-up Networking folder and will be used for null modem.



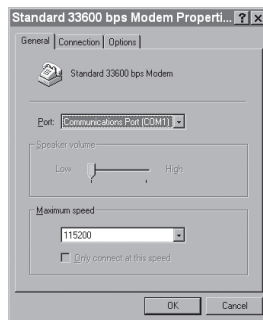
Step 15 Right-click on the newly setup connection icon for property.



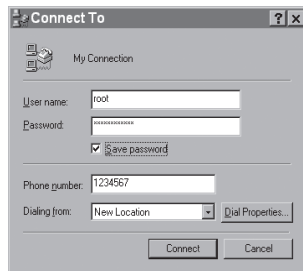
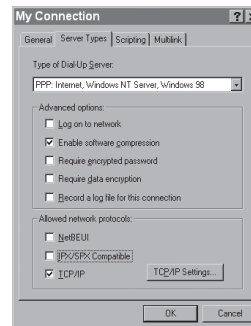
Step 16 In the first General page, clear "Use area code and Dialing Properties" option and click on **Configure**.



Step 17 Select 115200 as the speed and click on **OK**.



Step 18 In the second page, only check "Enable software compression" and "TCP/IP" while leaving others blank. Keep other settings as default values and click on **OK**. Now the connection is ready for null modem connection.



Step 19 Double clicking the newly setup connection will pop out a dialing information window. Enter "root" as user name and the serial number labeled on the bottom side of box as password and click on **Connect**. The user name and password are identical to what used in web access and may be changed by administrators after successful installation. Note that alphabets in serial number should be upper case. After some negotiation prompts, a connection status window will show the speed is 115200 bps.

- * Remember to change the password in system configuration first for security.
- * Null modem connection only works once after system starts. To re-connect via null modem, system needs restart.
- * Review network and modem settings in configuration page for correct operation. To activate auto-dial, some application should be setup in advance.
- * After finishing configuration, power off system and change null modem cable to a real modem for Internet access.

After entering the main page, refer to the user manual for further information is strongly advised.