



# Video Server IT401-IT501

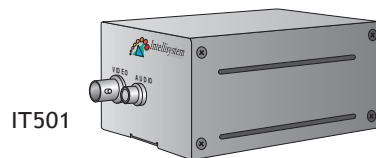
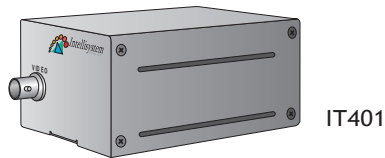
---

## Quick Installation Guide

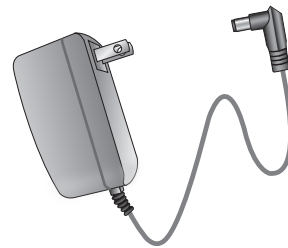
This guide describes the basic functions of IT401-IT501. All detailed information is described in the user's manual.

# 1 Checking Package Contents

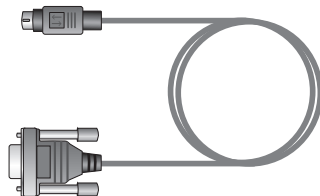
## ● IT401 - IT501



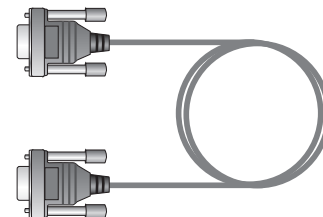
## ● Power adapter



## ● Camera control cable



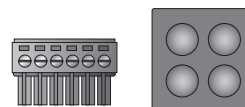
## ● Null modem cable



## ● Utility CD-ROM



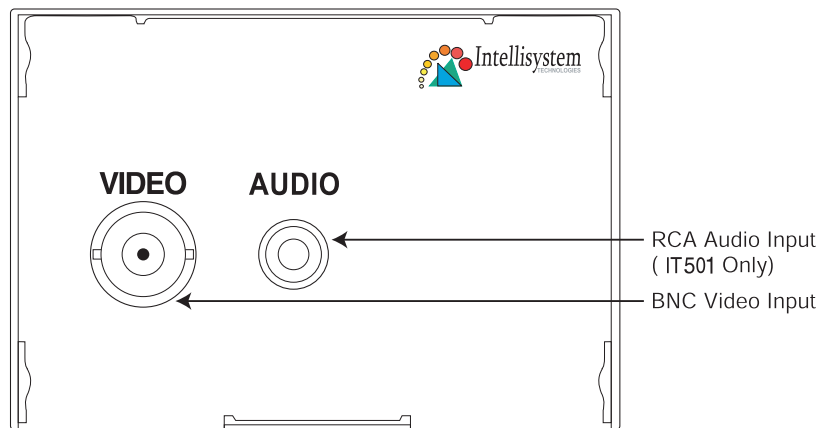
## ● I/O connector and Pad



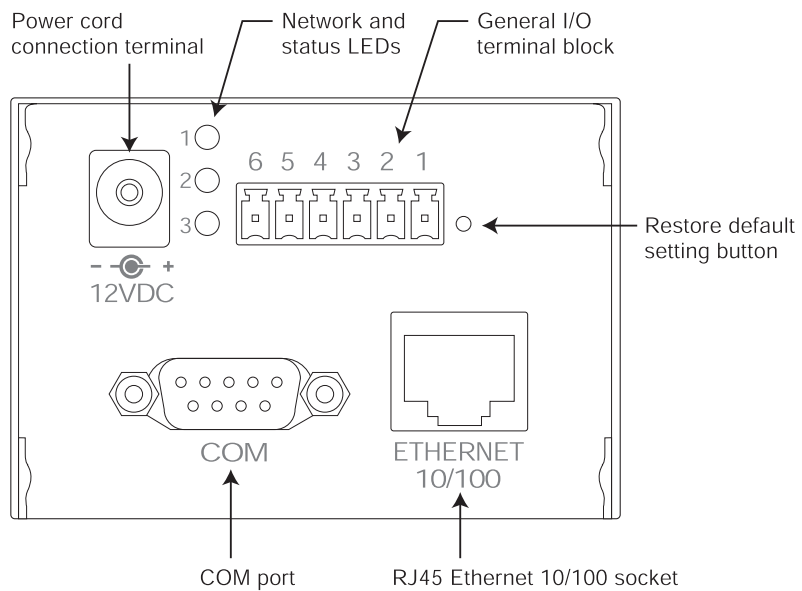
## ● Warranty card

## 2 Physical Description

### ● Front Panel



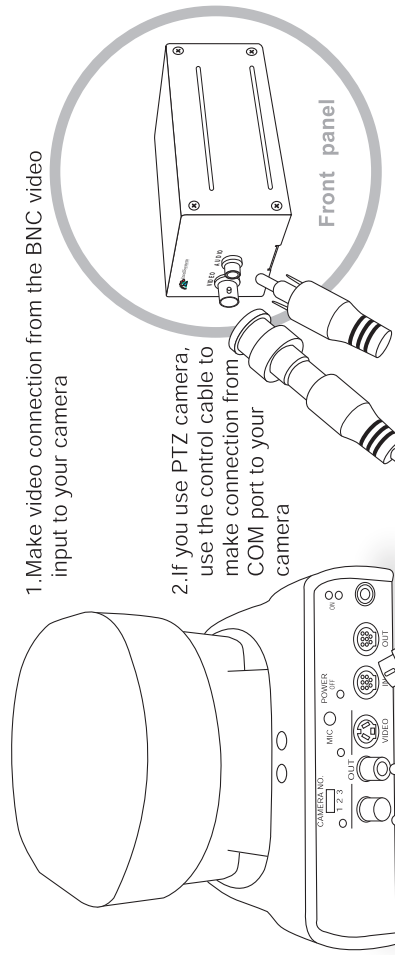
### ● Rear Panel



Intellisystem Technologies - <http://www.intellisystem.it>

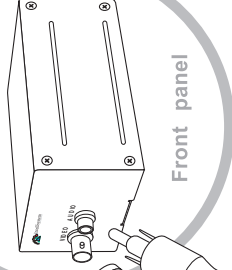
### 3 Making Connections

#### ● Installing your server to an Ethernet network



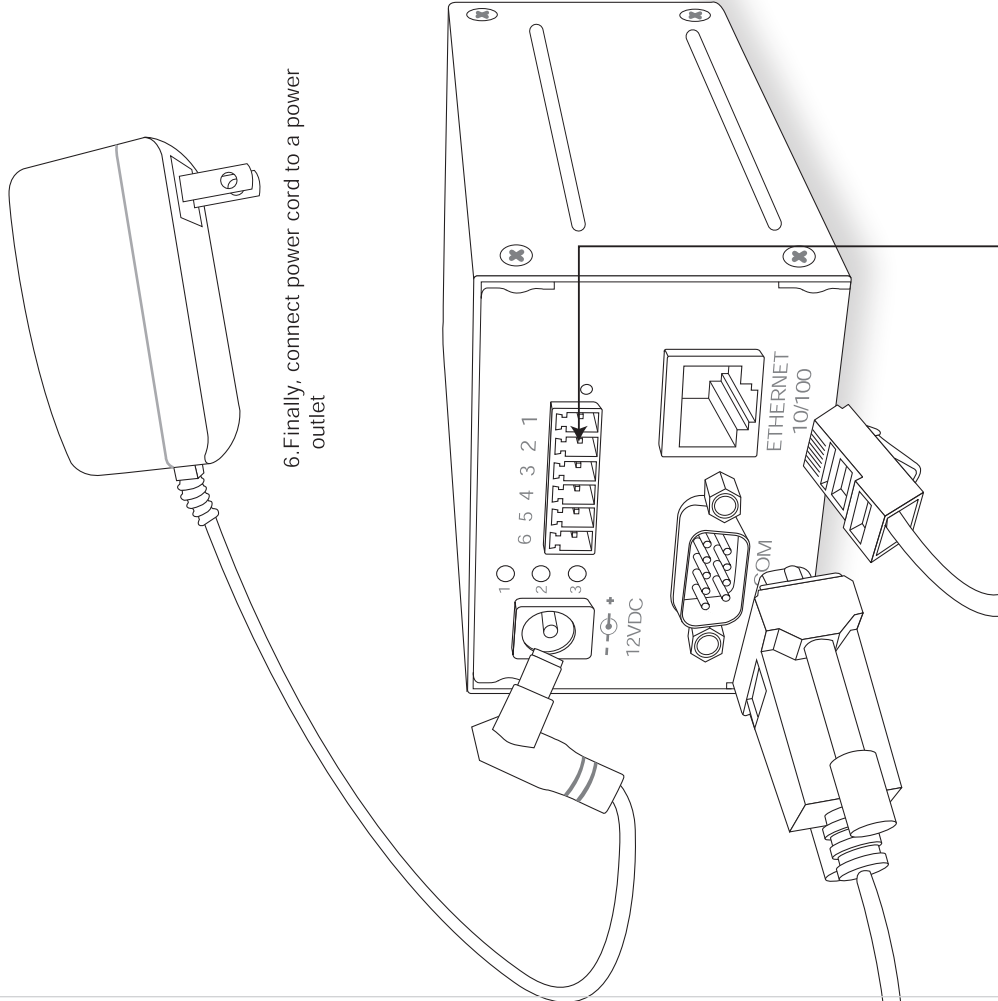
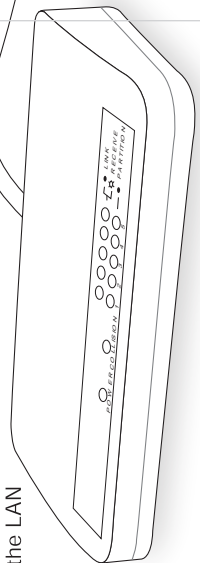
1. Make video connection from the BNC video input to your camera

2. If you use PTZ camera, use the control cable to make connection from COM port to your camera



3. Make audio connection from RCA audio input to your Line-Out audio source ( IT501 only)

4. Make Ethernet connection from Ethernet port on server to the hub on the LAN



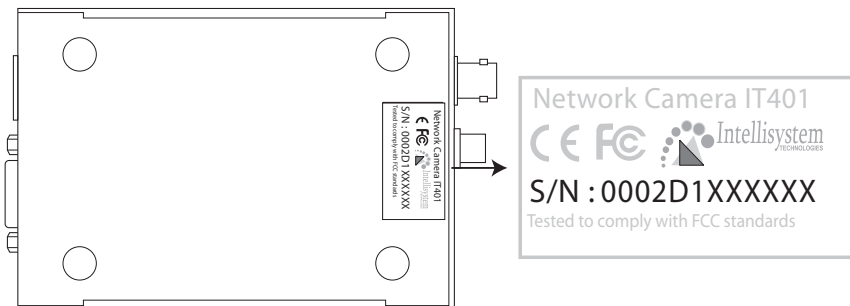
6. Finally, connect power cord to a power outlet

5. If you have external devices such as sensors and alarms, make connection from I/O terminal block

Note : If you want to use modem or null modem connection , please refer to the user's manual

## 4 IP address setting for Video Server

- A** Note the serial number from the label on the unit.



This serial number is same as Ethernet address, for example: 0002D1100052=00-02-D1-10-00-52

### B Assign IP address

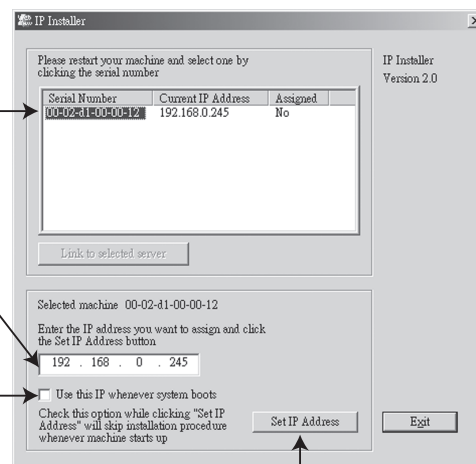
- Using Installer program

1.Run the Installer.exe first, and power on the Video Server

2.Click on serial number that matches the one you just note

3.Assign a free IP address

4.If you want to fix the IP address of the unit, check the option "Use this IP whenever system boots"



5.Click "Set IP Address" to start installation process

Intellisystem Technologies - <http://www.intellisystem.it>

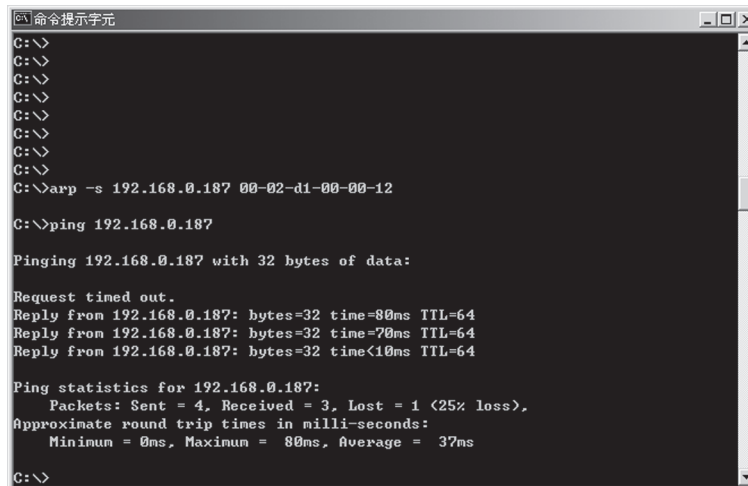
● Using Dos command in Windows

Start a DOS window and type the following command

**Syntax :**

```
arp -s <Server IP address> <Ethernet address>  
ping <Server IP address>
```

**Example :**



```
C:\>  
C:\>  
C:\>  
C:\>  
C:\>  
C:\>  
C:\>  
C:\>  
C:\>  
C:\>  
C:\>arp -s 192.168.0.187 00-02-d1-00-00-12  
C:\>ping 192.168.0.187  
Pinging 192.168.0.187 with 32 bytes of data:  
Request timed out.  
Reply from 192.168.0.187: bytes=32 time=80ms TTL=64  
Reply from 192.168.0.187: bytes=32 time=70ms TTL=64  
Reply from 192.168.0.187: bytes=32 time<10ms TTL=64  
Ping statistics for 192.168.0.187:  
    Packets: Sent = 4, Received = 3, Lost = 1 (25% loss),  
    Approximate round trip times in milli-seconds:  
        Minimum = 0ms, Maximum = 80ms, Average = 37ms  
C:\>
```

1.Type arp command and press enter

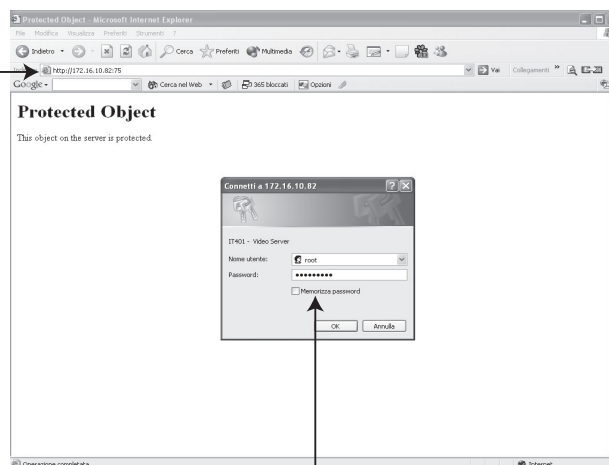
2.Type ping command and press enter

3.If you see the reply message, the unit has been installed successfully

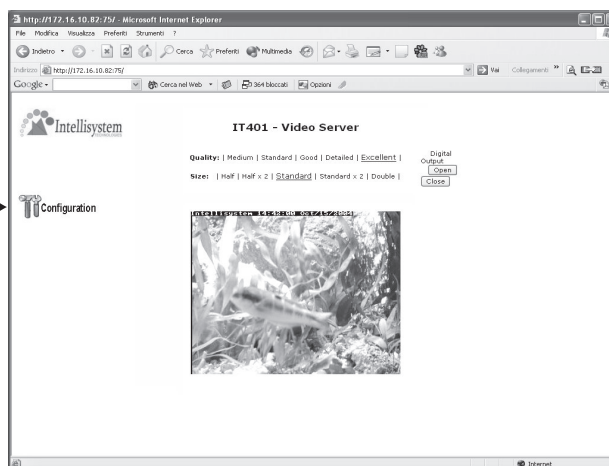
## 5 Start the Internet Explorer for verifying your installation

1. Type the IP address and press enter

At the initial access to the "Connection Type" page, the web browser will ask for a new plug-in installation, the plug in being Network Camera. This plug-in has been registered for certification and can be used to change the parameters at the client's site. The user may click on to install the plug-in. If the web browser does not allow the user to complete the installation, check the Internet security in order to set on your web browser to "Ask confirmation for download ActiveX control without electronic Signature" and so refresh the current web page. If the problem persist please contact your IT or networking supervisor.



2. Type "root" as user name and the serial number as password, then press enter or click ok



3. Click the configuration for further installation

For detail information on further configuration, see user's manual on the CD.