



RECS 101

Remote Ethernet Control System

Your virtual hand....

RECS 101 offers cost-efficient and future-proof solutions for industrial, security and remote control applications.

Complete with its own built-in web server and unique IP address, the RECS 101 installs onto any 10/100 Mbps TCP/IP network to provide direct network access, control and manage of 16 digital inputs and 16 digital outputs.

The digital I/O communication ports are accessed from a standard desktop browser like Microsoft Internet Explorer or Netscape Navigator or other application that uses network communication.

Easy to install and to configure, RECS 101 enable you to have a professional custom application up in few minutes. This makes it ideal for a range of remote control applications such as domestic control, security, industrial etc.

The system is as open or as closed as you like.

Thanks to the java technology inside RECS 101 your custom application will be innovative and totally customizable.

No PC required for control your device over the Intranet/Internet network. RECS 101 just needs an IP address before it can be used, and installation options abound.



RECS 101 is provided with RECS utility software, witch searches the network for RECS 101 servers and displays their MAC address, let you configure your IP address and let you to upload your custom application



RECS 101 front view.



RECS 101 back view.

-  **16 TTL digital inputs**
-  **16 TTL digital outputs**
-  **Built-in Web server**
-  **"Plug and Use" over any TCP/IP network**
-  **No PC required**
-  **Customizable user interface**
-  **Support for style sheet, flash and java application**



General

Built-in Web Server and network interface.
No PC required for operation.
Support of any internet browser.
Totally customizable.

- Width: 12.8 cm.
- Length: 13,4 cm.
- Weight: 0.20 kg (excl. power supply).

Installation

Easy and quick installation – you need just to connect your network, assign an IP address and in few minutes your system will be up.

Technical Features

Power Supply:

- 5V DC $\pm 10\%$.
- 200mA (nominal).

Microprocessor:

- Uvicom SX52BD.

Ethernet Interface

- RealTek full-duplex Ethernet controller.RTL8019AS
- Supports 10 base-5, 10 base-2 and 10 base-T compliant with IEEE802.3.
- 16 KByte SRAM.
- NE2000 compatible.
- Shielded connector compliant with AT&T258.

Memory

- 512 KBytes Flash Memory.

Digital I/O interface

- 16 TTL digital inputs: Female Cannon 25 pin connector.
- 16 TTL digital outputs: Male Cannon 25 pin connector.

Supported Protocols

HTTP,BOOTP,TCP,UDP,IP,ICMP,ARP.

Software

RecsUtility – used to setup RECS 101 device in order to change the IP address and to upload your custom application.

Operating Environment

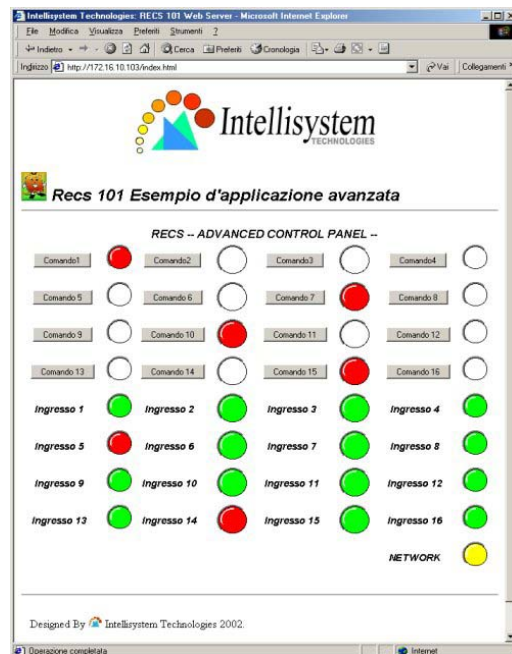
- Humidity: 0 ~ 95%.
- Operating temperature: 0 ~ 50 °C.

Dimensions / Weight

- Height: 5,4 cm.



Integrated web server.



Application example.