

Intellisystem
TECHNOLOGIES

IT610 - IT610W - IT610W-LR
Network Camera



IT610



IT610W



IT610W-LR

USER'S MANUAL

<http://www.intellisystem.it>

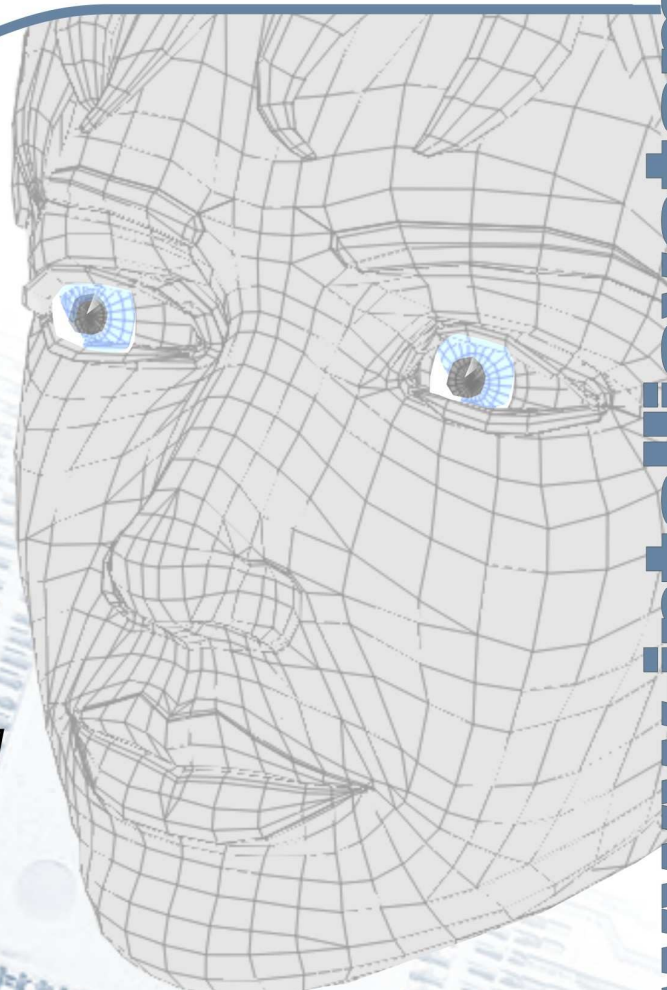


Table of Contents

Before You Use This Product	3
Package Contents	4
Outdoor Housing Assembling	6
Installation	7
Hardware Installation	7
Software Installation	9
Initial Access to the IT610 (IT610W, IT610W-LR) Network Camera	12
Check Network Settings	12
Add Password to Prevent Unauthorized Access	12
How to Use	13
Authentication	13
Installing Plug-in	14
Primary User's Capabilities	15
Main Screen with Camera View	15
Client Settings	17
Administrator's Capabilities	19
Fine-Tuning for Best Performance	19
Opening Accounts for New Users	21
Building a Multimedia Web Attraction Site	22
Building a Security Application	25
Software Revision Upgrade	27
Definitions in Configuration	28
System Parameters	29
User Group Administration	30
Network Settings	31
General	31
HTTP	31
Streaming	32
WLAN Configuration	32
Mail & FTP	34
SMTP	34
FTP	34
Video Codec Parameters	35

Motion Detection	37
Application Setup	38
Weekly Schedule	38
Event Operation	38
Sequential Operation	39
Camera Control	40
UPnP and DDNS Settings	42
Remote Controller	43
Viewing System Parameters	44
Factory Default	44
Appendix	45
A. Troubleshooting	45
B. Frequently Asked Questions	46
C. URL Commands of the IT610 (IT610W, IT610W-LR) Network Camera	49
Capture Update Snapshot of JPEG Image	49
Query Status of the Digital Input	49
Drive the Digital Output	49
Restore Factory Default Settings	50
Restart System	50
Page URL	51
System Resource URL	51
General Format of Command URL	52
System Configuration URL	52
Security Configuration URL	53
Network Configuration URL	53
DDNS & UPnP Configuration URL	55
Mail&FTP Configuration URL	55
Audio/Video Configuration URL	56
Camera Control URL	58
Image Quality Configuration URL	59
Application Configuration URL	59
Technical Specifications	63


Before You Use This Product

The use of surveillance devices may be prohibited by law in your country. The IT610 (IT610W, IT610W-LR) Network Camera is not only a high-performance web-ready camera but also can be part of a flexible surveillance system. It is the user's responsibility to ensure that the operation of such devices is legal before installing this unit for its intended use.

It is important to first verify that all contents received are complete according to the list in the "Package Contents" chapter. Take notice of the warnings in "Quick installation guide" before the IT610 (IT610W, IT610W-LR) Network Camera is installed, then carefully read and follow the instructions in the "Installation" chapter to avoid damages due to faulty assembly and installation. This also ensures the product is used properly as intended.

The IT610 (IT610W, IT610W-LR) Network Camera is a network device and its use should be straightforward for those who have basic network knowledge. The "Troubleshooting" chapter in the Appendix provides remedies to the most common errors in set up and configuration. You should consult this chapter first if you run into a system error.

The IT610 (IT610W, IT610W-LR) Network Camera is designed for various applications including video sharing, general security/surveillance, etc. The "How to Use" chapter suggests ways to best utilize the IT610 (IT610W, IT610W-LR) Network Camera and ensure proper operations. For the creative and professional developers, the "URL Commands of The IT610 (IT610W, IT610W-LR) Network Camera" chapter serves to be a helpful reference to customize existing homepages or integrating with the current web server.

For paragraphs preceded by  the reader should use caution to understand completely the warnings. Ignoring the warnings may result in serious hazards or injuries.

Package Contents

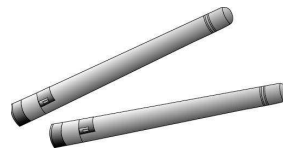
The IT610 (IT610W, IT610W-LR) Network Camera



Software CD



Antennas (for IT610W and IT610-LR models only)



Power adapter



Remote controller



Outdoor Housing Assembling

Components:



Step 1: Get the power wire through the bracket first.



Step 2: Then through out from the housing part, meanwhile insert the red and blue plug to the power socket (P.S. This device is suitable for AC or DC input, no negative or positive discriminate)

Step 3: Screw the dome on the fixing brigde.



Step 4: Plug in the power of the dome. For the model IT610W check the antenna connection. The picture reported above represent only the IT610 Networkcamera model.

Step 5: Finally cover up (plug the antennas on the camera for IT610W and plug the antennas on the bracket for IT610W-LR, only) and the assembling work is accomplished.

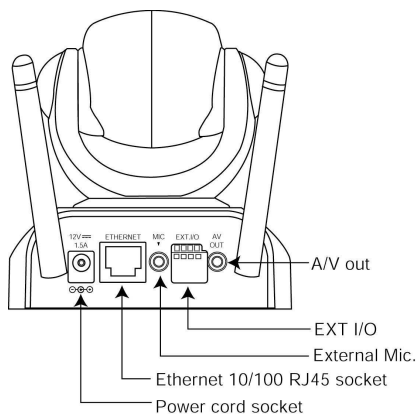


Installation

Hardware Installation

Please verify that your product package contains all the accessories listed in the foregoing Package Contents. These instructions refer to the PT camera included on the package that should be setup first.

Depending on the user's application, an Ethernet cable may be needed. The Ethernet cable should meet the specs of UTP Category 5 and not exceed 100 meters in length.



⚠ Connect the power adapter jack to the Network Camera before plugging in to the power socket. This will reduce the risk of accidental electric shock.

Upon powering up, the device runs through a self-test procedure and the front LEDs will blink between green and red a few times. If self-test passes, the LEDs will shut off and the IT610 (IT610W, IT610W-LR) Network Camera will be on stand-by and ready for software installation. If self-test fails the red LED will blink several times. Refer to Appendix A for troubleshooting.

The IT610 (IT610W, IT610W-LR) Network Camera will first detect Ethernet. If it does not connect to Ethernet, the IT610 (IT610W, IT610W-LR) Network Camera will try WLAN. During the searching and connecting process to the wireless access point or station, the red LED of the IT610 (IT610W, IT610W-LR) Network Camera will flash every second. Until the IT610 (IT610W, IT610W-LR) Network Camera connects to the other wireless device, the red LED will become lighted. Operating in either network mode, the green LED will flash every second as heartbeat to indicate alive.

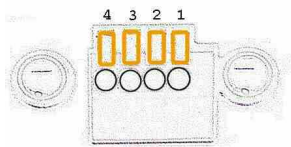
To install in Ethernet

Make sure the Ethernet is firmly connected to a switch hub. After attaching the Ethernet cable plug in the power adapter. If the LED turns out to be steady green after self-test, go to next paragraph "Software installation". If the Ethernet is not available, the IT610 (IT610W, IT610W-LR) Network Camera will switch to wireless LAN mode.

To install in wireless LAN

If the Ethernet is not available while power on, the IT610 (IT610W, IT610W-LR) Network Camera will search for any access point with the SSID "default". Once any access point is found, the LED will turn green to wait for installation. If the network environment cannot meet the default settings, install the IT610 (IT610W, IT610W-LR) Network Camera in Ethernet to proceed with wireless LAN configuration.

The IT610 (IT610W, IT610W-LR) Network Camera provides a general I/O terminal block with one digital input and one relay switch for device control. Pin 1 and Pin 2 can be connected to an external sensor device and the state of voltage can be monitored from the initial state 'LOW'. The relay switches Pin 3 and Pin 4 can be used to turn on or off an external device.



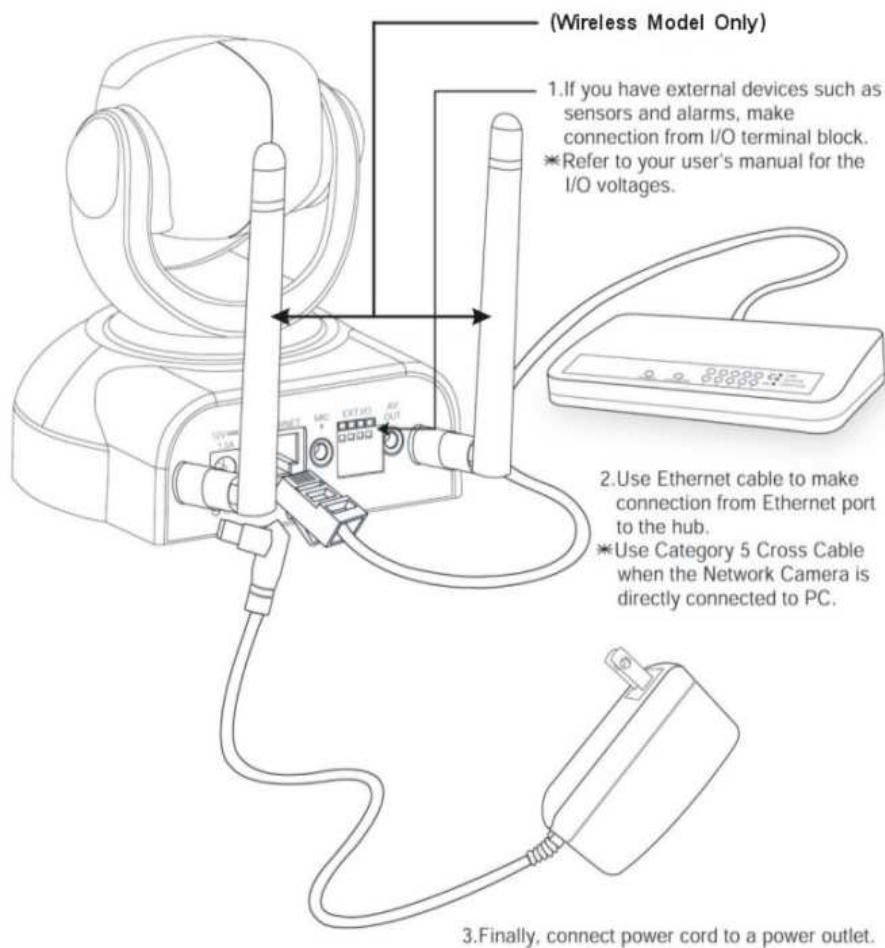
1	DI+	INPUT (Max. 50mA, 12VDC)
2	DI-	INPUT (Initial state of DI is Low)
3	SW_COMMON	OUTPUT (open from SW_OPEN at initial state) (close with SW_OPEN when DO is set to ON)
4	SW_NOPEN	OUTPUT (Max. 1A, 24VDC or 0.5A, 125VAC)

Software Installation

In this manual, "User" refers to whoever has access to the IT610 (IT610W, IT610W-LR) Network Camera, and "Administrator" refers to the person who can configure the IT610 (IT610W, IT610W-LR) Network Camera and grant user access to the camera.

At the end of the hardware installation, the Administrator must place the product software CD into the CD-ROM drive of the PC running in MS Windows.

Click on the IP installer to execute the installation program.



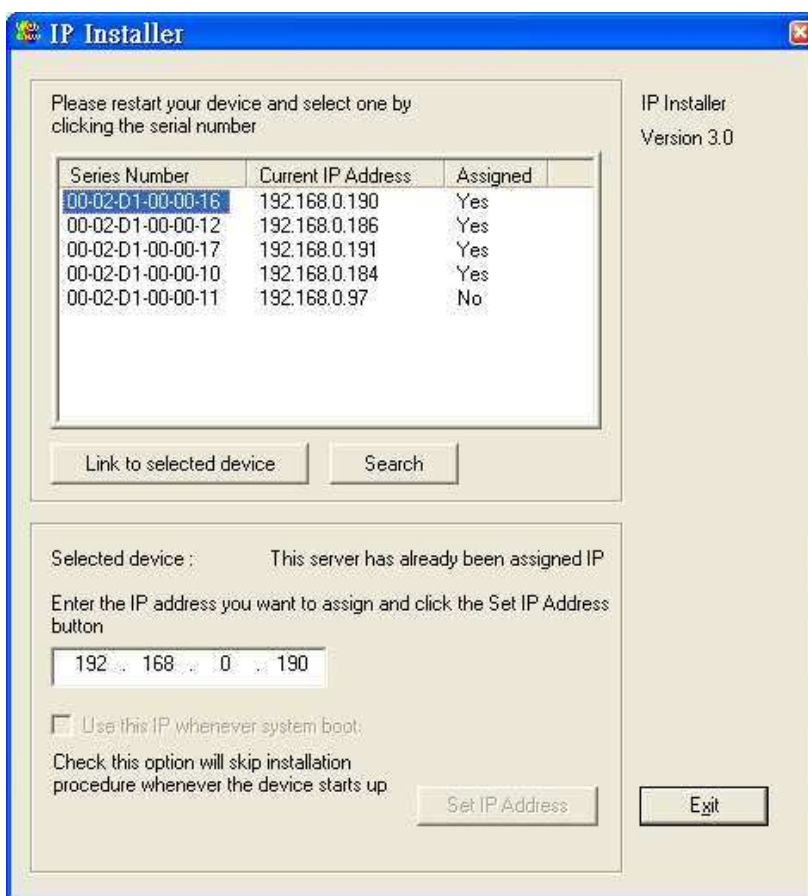
⚠ Install the IT610-IT610W Network Camera on Ethernet before install it on WLAN. Refer to the network setting chapter to setup wireless network parameters.

Upon IP installer's start up, a searching box will pop up. This program searches for the IT610 (IT610W, IT610W-LR) Network Cameras on the same LAN:



After searching the LAN, the main window of IP installer will pop up.

The IP addresses shown in the "Current IP Address" field reflect those on the local network. They may be from the DHCP server. If there is no DHCP server, the camera will try to find a free IP address (this takes from 15 second to 3 minutes, depending on the LAN status). The method of finding IP address is seeking from 192.168.0.99, to 192.168.0.254. If any of the address inside this range is free, the IT610 (IT610W, IT610W-LR) Network Camera will be assigned to this IP, and its subnet mask would be 255.255.255.0. If none of the

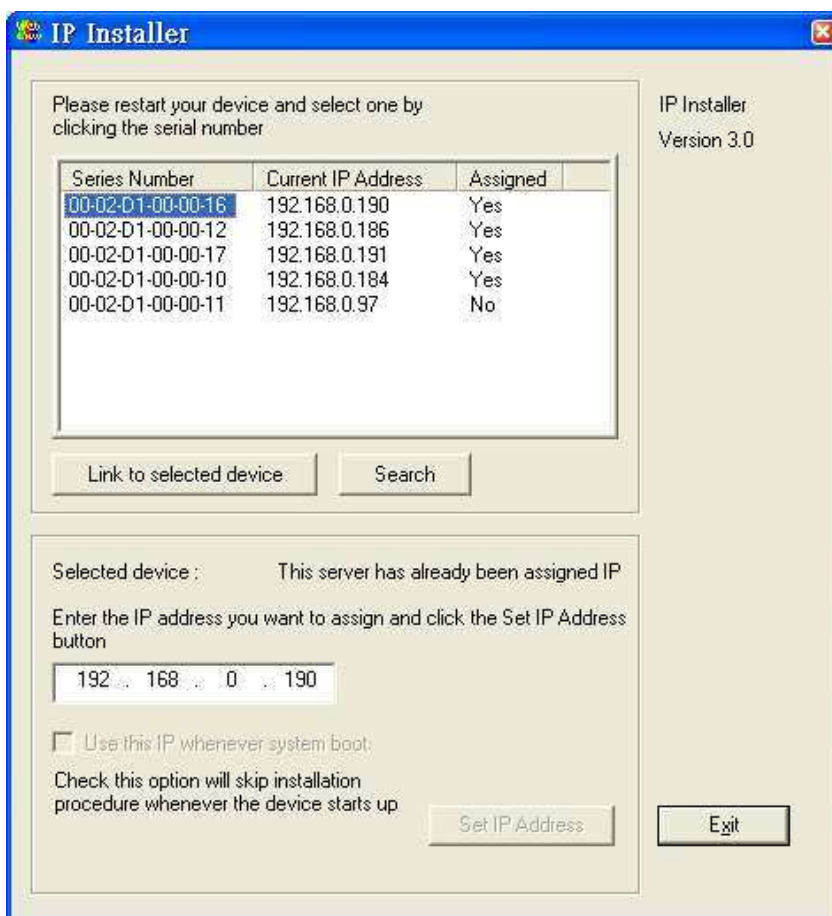


addresses is free, the IT610 (IT610W, IT610W-LR) Network Camera will try the range from 192.168.0.2 to 192.168.0.98. After an IP address is assigned to the camera, the "Activity" status LED blinks.

The UPnP function will always assign an IP address for the IT610 (IT610W, IT610W-LR) Network Camera.

The Administrator can click on button "Link to selected device" to connect the I.E. to the camera.

If the camera is not on the IP installer list, click on the "Search" button to search for the camera on the LAN.



For the series number in the "Serial Number" field, please check the label on the bottom of the camera and/or inside the dome outdoor housing.



Initial Access to the IT610 (IT610W, IT610W-LR)

Network Camera

Check Network Settings

The IT610 (IT610W, IT610W-LR) Network Camera can be connected either before or immediately after software installation onto the Local Area Network. The Administrator should complete the network settings on the configuration page, including the correct subnet mask and IP address of gateway and DNS. Ask your network administrator or Internet service provider for the detail information. By default the IT610 (IT610W, IT610W-LR) Network Camera requires the Administrator to run installation every time it reboots. If the network settings are to remain unchanged, disable the Install option. Refer to "Network settings" on the System Configuration page for details. If any setting is entered incorrectly and cannot proceed to setting up the IT610 (IT610W, IT610W-LR) Network Camera, restore the factory settings following the steps in the "Troubleshooting" chapter of the Appendix.

Add Password to Prevent Unauthorized Access

The default Administrator's password is blank and the IT610 (IT610W, IT610W-LR) Network Camera initially will not ask for any password. The Administrator should immediately implement a new password as a matter of prudent security practice. Once the Administrator's password is saved, the IT610 (IT610W, IT610W-LR) Network Camera will ask for the user's name and password before each access. The Administrator can set up a maximum of twenty (20) user accounts. Each user can access the IT610 (IT610W, IT610W-LR) Network Camera except to perform system configuration. Some critical functions are exclusive for the Administrator, such as system configuration, user administration, and software upgrades. The user name for the Administrator is permanently assigned as "root". Once the password is changed, the browser will display an authentication window to ask for the new password.

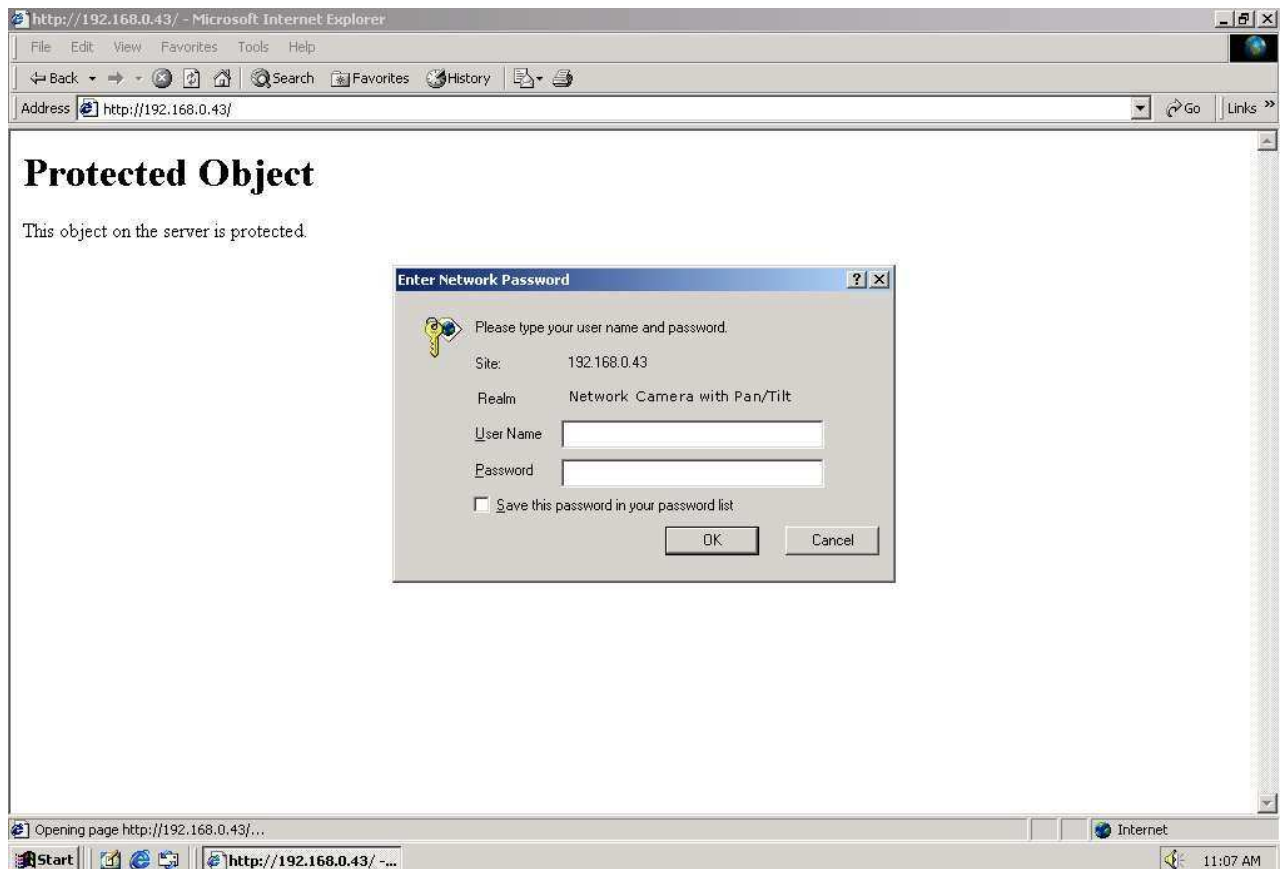
Once set, there is no provision to recover the Administrator's password. The only option is to restore to the original factory default settings.

How to Use

Authentication

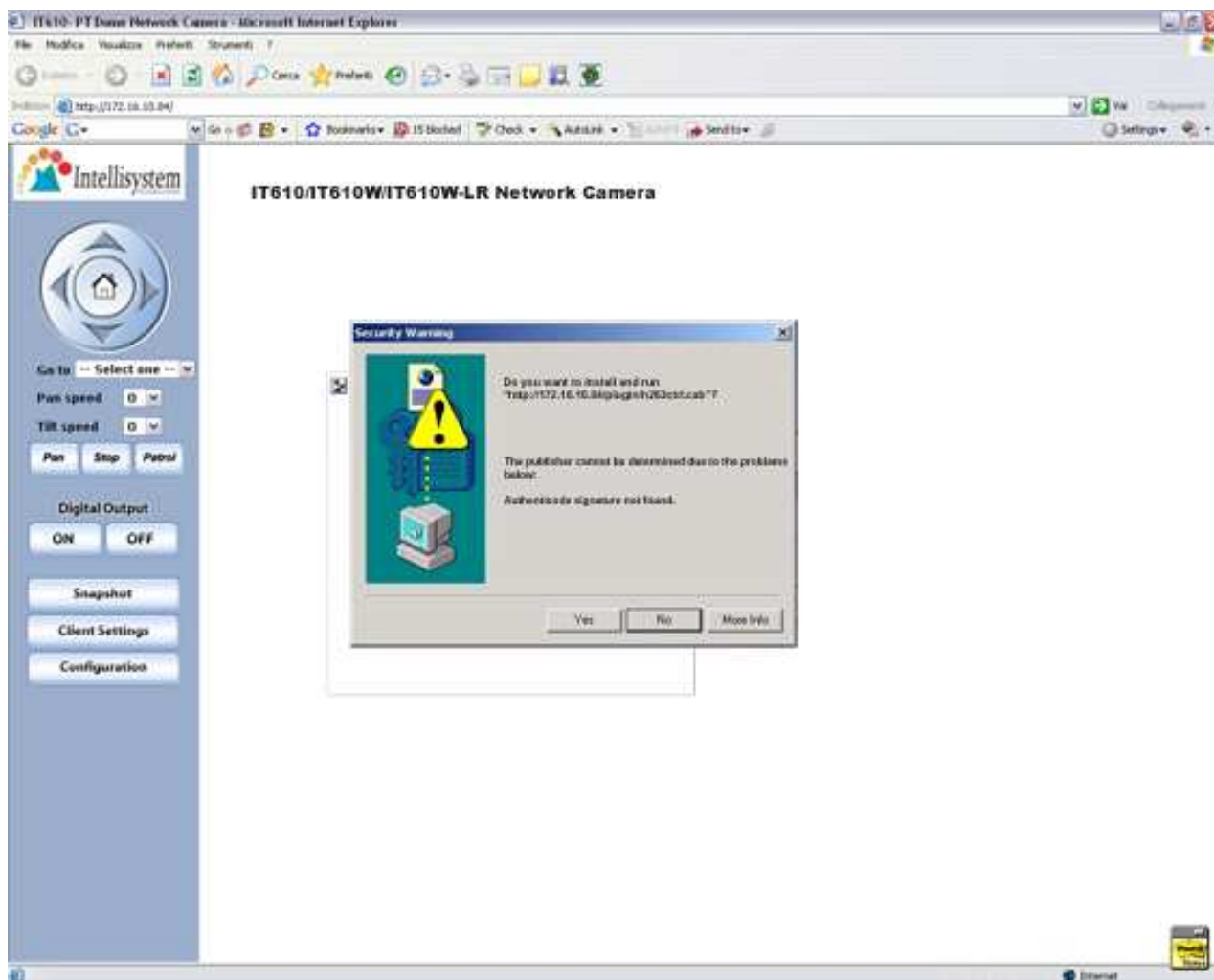
After opening the Web browser and typing in the URL of the IT610 (IT610W, IT610W-LR) Network Camera, a dialogue window pops up to request a username and password. Upon successful authentication, the following figure is displayed.

The foreground is the login window and the background shows the message if authentication fails. The user may check the option box to save the password for future convenience. This option is not available to the Administrator for obvious reason.



Installing Plug-in

For the initial access to the IT610 (IT610W, IT610W-LR) Network Camera in Windows, the web browser may prompt for permission to install a new plug-in that is the IT610 (IT610W, IT610W-LR) Network Camera. Permission request depends on the Internet security settings of the user's PC or notebook. If the highest security level is set, the computer may prohibit any installation and execution attempt. This plug-in has been registered for certificate and is used to display the video in the browser. Users may click on to proceed. If the web browser does not allow the user to continue to install, check the Internet security option and lower the security levels or contact your IT or networking supervisor for help.



Primary User's Capabilities

Main Screen with Camera View

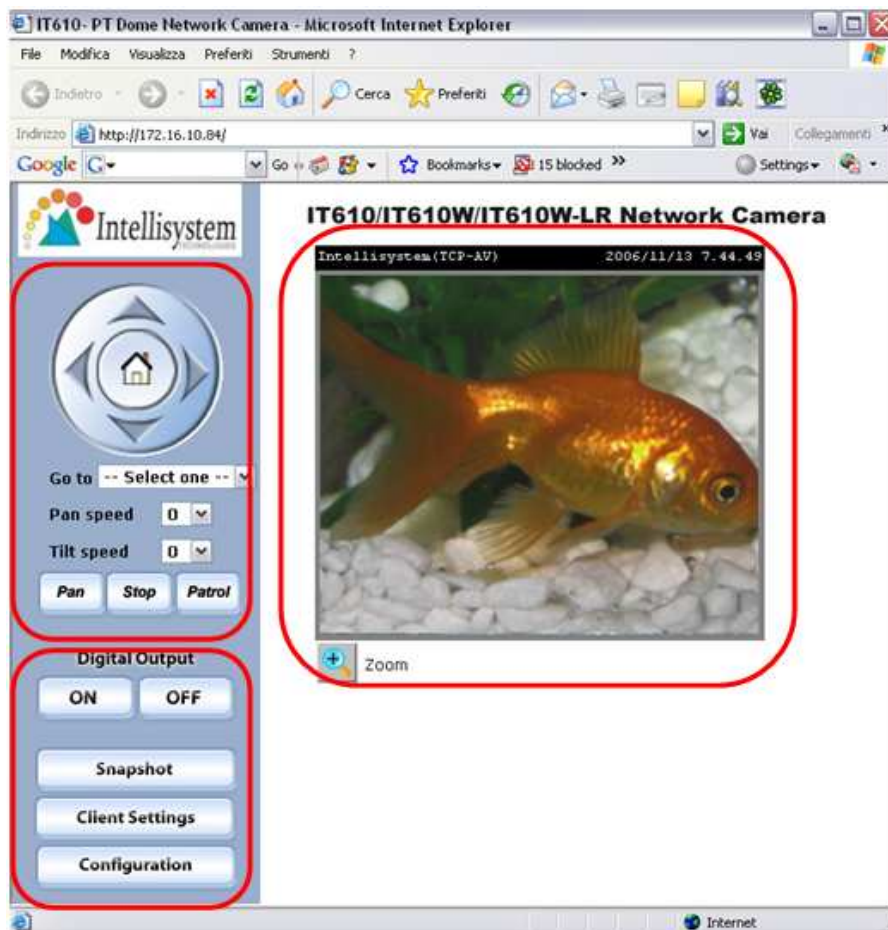
The main page layout has three parts:

Configuration functions: The camera can be configured using these user interfaces.

Camera View: What the camera sees.

Pan/Tilt control buttons: These buttons provide a command interface to control the aim of the camera.

Click on the configuration link to the left of the image window to enter the configuration page.



The Configuration:**"Digital Output"**

Clicking on the "On" or "Off" button turns the digital output to either on or off status.

"Client Settings"

Clicking on this button links you to the client setting pages, please check the following session for more details.

"Configuration" Only the Administrator can access camera configurations.

The Camera View:

The information bar at the top of the camera view shows the connection type to the IT610 (IT610W, IT610W-LR) Network Camera and the current date/time.

The camera view provides not only the live video, but also a way to aim the IT610 (IT610W, IT610W-LR) Network Camera to different target. Using mouse to click on the target inside the video will command the IT610 (IT610W, IT610W-LR) Network Camera to aim at the target.

The Pan/Tilt Control Buttons:

The direction buttons are for Left, Right, Up, Down, and Home functions. The Home button centers the camera.

"Go to" Once the Administrator has determined the preset positions; the User can aim the camera using this control.

"Pan speed"

This button sets the moving range of the "Left" and "Right" commands.

"Tilt speed"

This button sets the moving range of the "Up" and "Down" commands.

"Auto pan"

This button commands the camera to pan from the current position to the left-most and then to the right-most position. After panning, the camera returns to the original position.

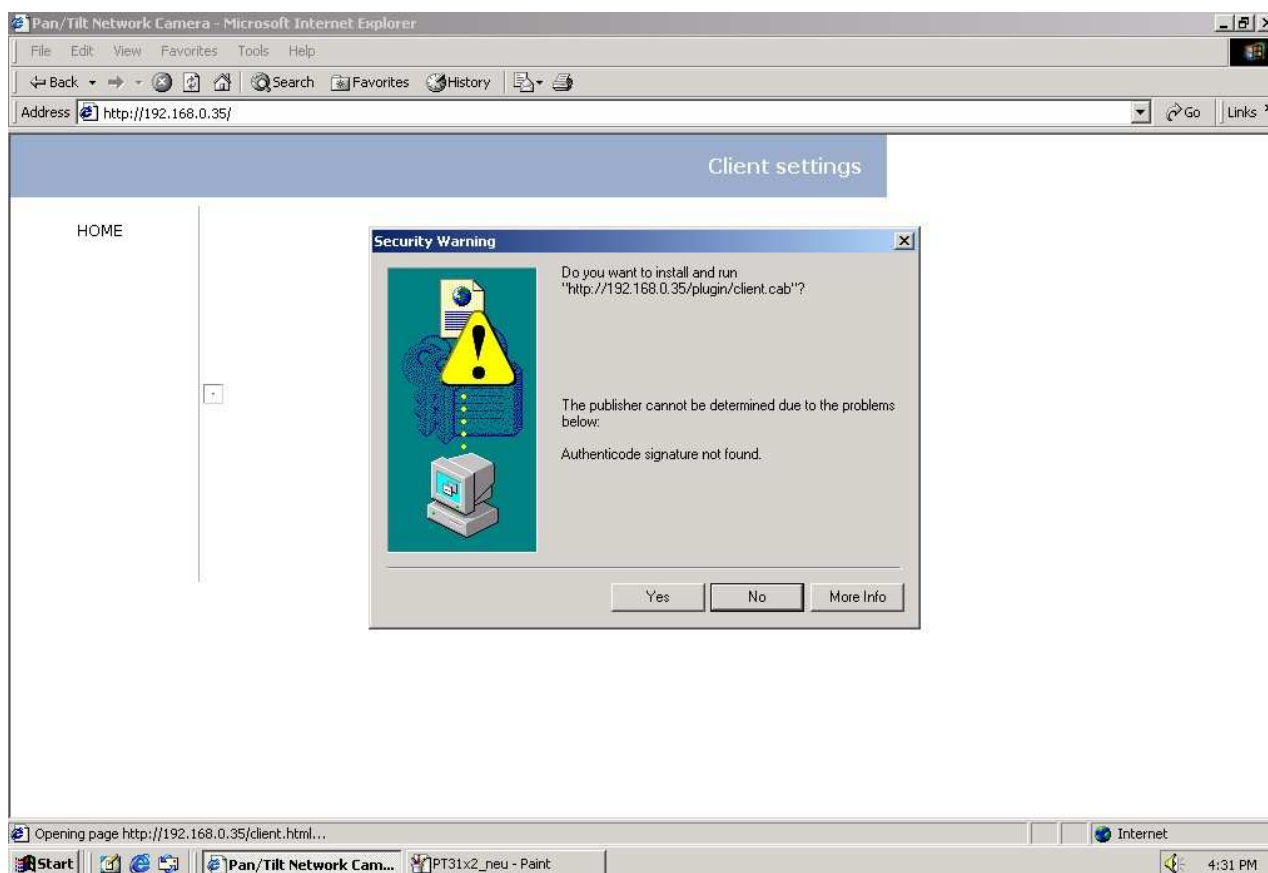
"Auto patrol"

This button commands the camera to patrol between the preset positions on the Patrol List, which can be modified on the "Camera control page". After one patrol cycle, the camera returns to the original position.

"Stop" This stops the "Auto Pan" command or "Auto Patrol" command.

Client Settings

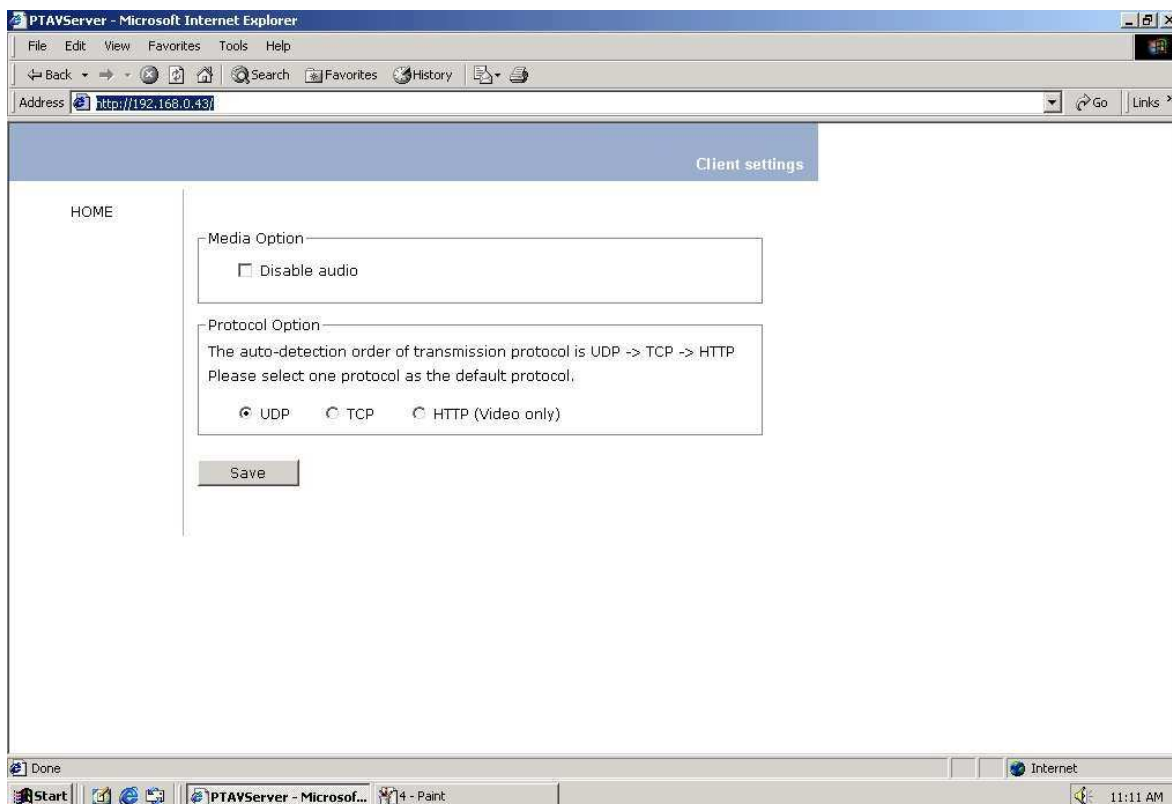
At the initial access to the "Connection type" page in Windows, the web browser will ask for a new plug-in installation, the plug-in being the IT610 (IT610W, IT610W-LR) Network Camera. This plug-in has been registered for certification and can be used to change the parameters at the client's site. The user may click on to install the plug-in. If the web browser does not allow the user to complete the installation, check the Internet security to lower the security level or contact your IT or networking supervisor.



There are two settings for the Client site. One is "Media Option" for the User to determine if audio should be muted. The other is "Protocol Option" which allows choices on connection protocol between client and server. There are three protocol choices to optimize your usage - UDP, TCP and HTTP.

The **UDP** protocol allows for more real-time audio and video streams. However, some packets may be lost due to network burst traffic and images may be obscured.

The **TCP** protocol allows for less packet loss and produce a more accurate video display. The downside with this protocol is that the real-time effect is worse than that with the UDP protocol. The **HTTP** protocol must be selected if the network is protected by a firewall and it only allows HTTP Port (80) to be opened. In this mode, audio will not be sent and only video is operational. If no special need is required, UDP protocol is recommended. Generally speaking, the client's choice will be in the order of UDP → TCP → HTTP. After the IT610 (IT610W, IT610W-LR) Network Camera is connected successfully, "Protocol Option" will indicate the selected protocol. The selected protocol will be recorded in the user's PC and will be used for the next connection. If the network environment is changed, or the user wants to let the web browser to detect again, manually select the UDP protocol, save, and return HOME to re-connect.



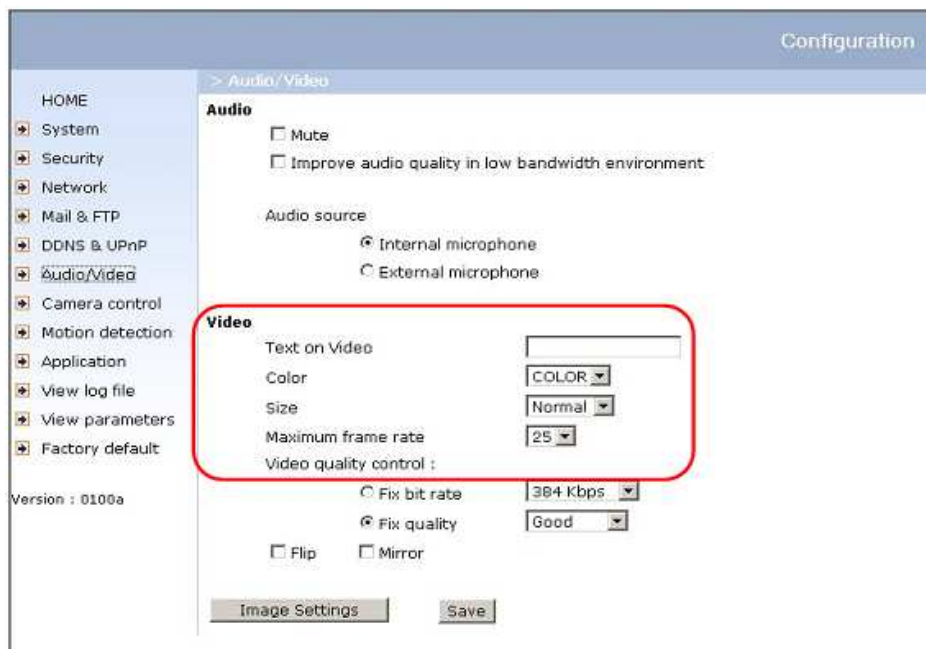
<url> [http://<The IT610 \(IT610W, IT610W-LR\)Network Camera>/protocol.html](http://<The IT610 (IT610W, IT610W-LR)Network Camera>/protocol.html)

< IT610 (IT610W, IT610W-LR) Network camera> is the domain name or the original IP address of the IT610 (IT610W, IT610W-LR) Network Camera.

Administrator's Capabilities

Fine-Tuning for Best Performance

There are a few choices the Administrator is allowed to maximize the capabilities of the IT610 (IT610W, IT610W-LR) Network Camera. Best performance generally equates to the fastest image refresh rate with the best video quality, and at the lowest network bandwidth as possible. The three factors, "Maximum frame rate", "Fix bit rate", and "Fix quality" on the Video Configuration page, are correlative to allow for achieving the best performance possible.



For Best Real-time Video Images

To achieve good real-time visual effect, the network bandwidth should be large enough to allow a transmission rate of greater than 20 image frames per second. If the broadband network is over 1 Mbps, set the "Fix bit rate" to 1000Kbps or 1200Kbps, and set "Fix quality" at the highest quality. The maximum frame rate is 25 fps in a 50Hz system and 30 fps in a 60Hz system. If your network bandwidth is more than 384Kbps, you can fix the bit rate according to your bandwidth and set the maximum frame rate to 25 fps or 30 fps. If you are shooting fast-moving images, you may want to slow the maximum frame rate down to 20 fps in order to

lower the rate of data transmission. This allows for better video quality and the human eyes cannot readily detect the differences between those of 20, 25, or 30 frames per second. If your network bandwidth is below 384 Kbps, set the "Fix bit rate" according to your bandwidth and try to get the best performance by fine-tuning with the "Maximum frame rate". In a slow network, greater frame rate results in blur images. Another work-around is to choose "Half" in the "Size" option for better images, or "Halfx2" for a larger image view. Video quality performance will vary somewhat due to the number of users viewing on the network; even when the parameters have initially been finely tuned. Performance will also suffer due to poor connectivity because of the network's burst constraint.

Only Quality Images Will Do

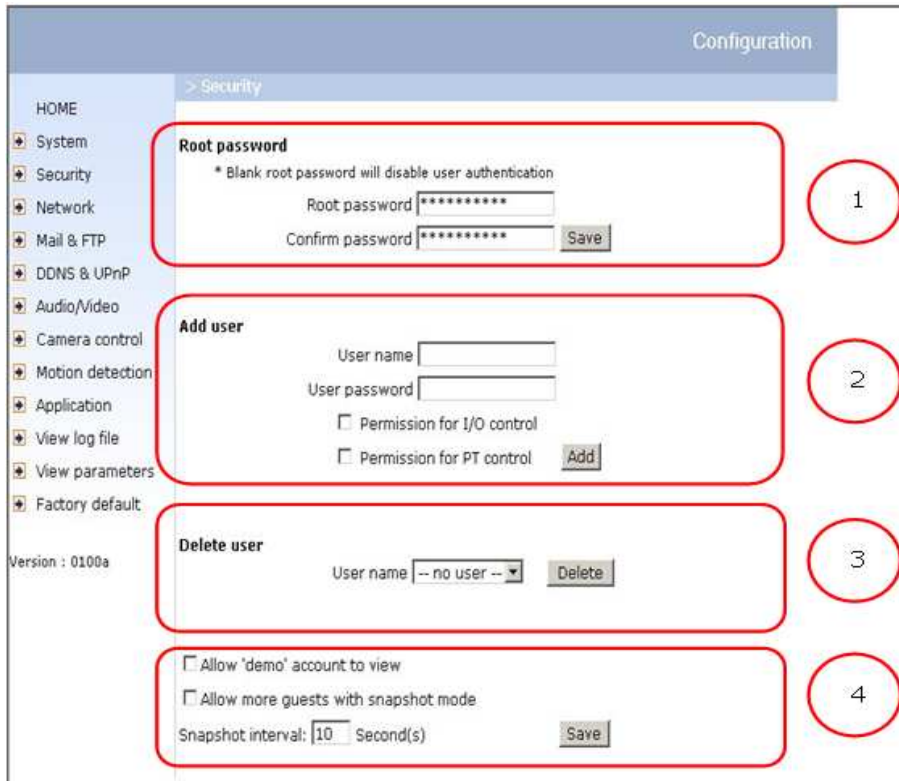
To have the best video quality, you should set "Fix quality" at "Detailed" or "Excellent" and adjust the "Maximum frame rate" to match your network's bandwidth. If your network is slow and you receive "broken" pictures, go to the TCP protocol in "Connection type" and choose a more appropriate mode of transmission. The images may suffer a time delay due to a slower connection. The delay will also increase with added number of users.

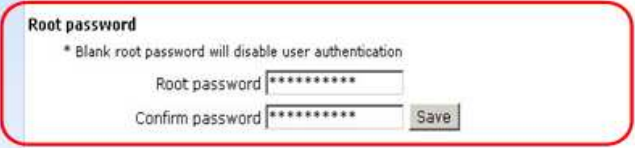
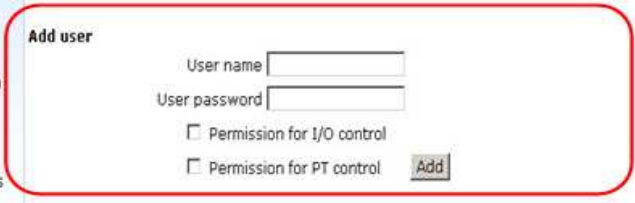

Somewhere Between Real-time and Clear Images

If you have a broadband network, set "Fix quality" at "Normal" or better, rather than setting "Fix bit rate". You can also fix the bandwidth according to your actual network speed and adjust the frame rate. Start from 30 fps down for best results but not below 15 fps. If the image qualities are not improved, select a lower bandwidth setting.

Opening Accounts for New Users

Protect the IT610 (IT610W, IT610W-LR) Network Camera by passwords



The IT610 (IT610W, IT610W-LR) Network Camera is shipped without any password by default. That means everyone can access the IT610 (IT610W, IT610W-LR) Network Camera including the configuration as long as the IP address is known. It is necessary to assign a password if the IT610 (IT610W, IT610W-LR) Network Camera is intended to be accessed by others. Type a new word twice in  to enable protection. This password is used to identify the administrator. Then add an account with user name and password for your friends in . The IT610 (IT610W, IT610W-LR) Network Camera can provide twenty accounts for your valuable customers or friends. Each account identifies the access right rather than the real visitor. That allows multiple visitors share the same account of different level. An option to access DI/DO is provided for each account. Some users may need to prohibit from controlling your attached devices. Another option allows different control to pan/tilt functions of the IT610 (IT610W, IT610W-LR) Network Camera. You may delete some users from .

More flexible options for viewers ^{o,4}

The first option allows anyone uses "demo" as the user name to view without password. The Administrator can also decide if more viewers are allowed to watch the video if the viewers exceed the limit. The overloaded viewers will have snapshot mode instead.

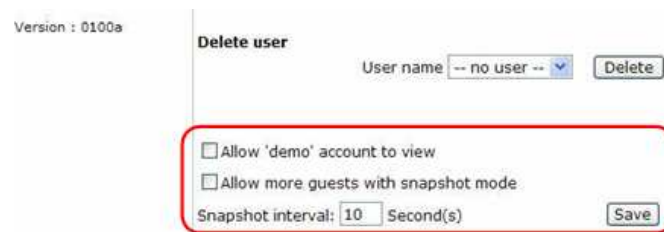
Building a Multimedia Web Attraction Site

Demo on multiple sites – mid-scale service

The IT610 (IT610W, IT610W-LR) Network Camera can allow ten visitors to view on-line simultaneously. After Installation, focus the IT610 (IT610W, IT610W-LR) Network Camera on any object you wish to share, and tell the visitors to type in the web browser address. Caution: You may want to maintain your visitor's list in the security configuration page to block out unexpected visitors.

Product demo for e-business – Large-scale Service

If the number of visitors has exceeded the limit, the IT610 (IT610W, IT610W-LR) Network Camera can allow the "overload" viewers to see the snapshots in JPEG mode, on the homepage. These are still images and will be refreshed periodically and automatically. It needs a script function supported by the web browser.



Version : 0100a

Delete user

User name -- no user --

Allow 'demo' account to view

Allow more guests with snapshot mode

Snapshot interval: Second(s)

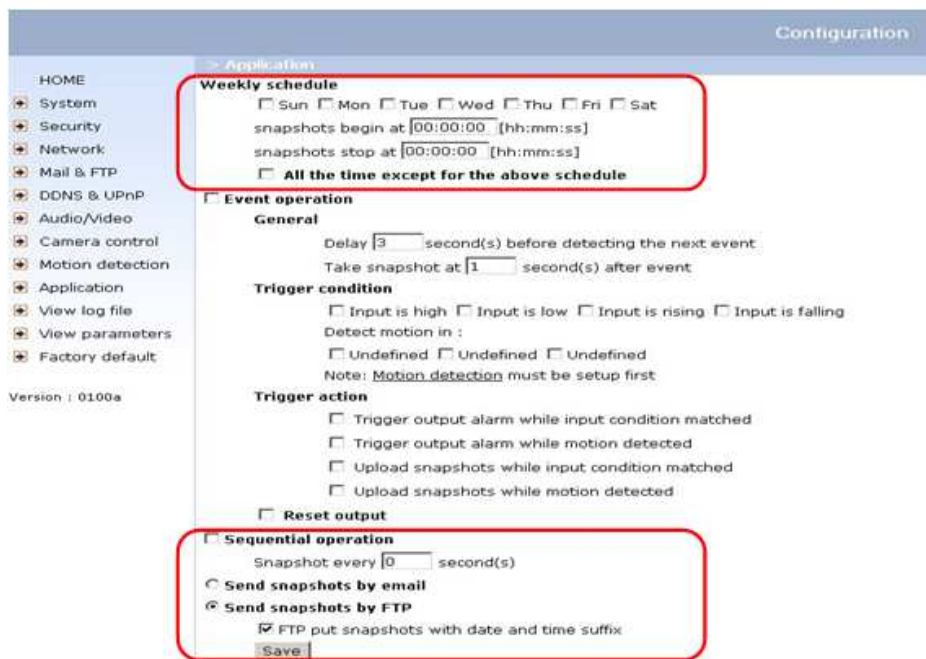
1. Click on "Configuration" on the homepage,
2. Click on "Security" in the left column,
3. Go to the bottom of the page and check off on "Allow more viewers with snapshot mode",
4. Set the snapshot interval to refresh the still image automatically. The longer the snapshot interval, the better the snapshot mode works for multiple viewers.

If you want to expand to allow in more viewers, the host server should be able to handle large network traffic, which must handle the picture refreshing from the IT610 (IT610W, IT610W-LR) Network Camera.

If the web server space has FTP service

Set the IT610 (IT610W, IT610W-LR) Network Camera up as an FTP client to upload the pictures. The access to the IT610 (IT610W, IT610W-LR) Network Camera will be independent of the number of viewers and the picture quality will remain constant.

1. Click on "Configuration" on the homepage,
2. Click on "Network" in the left column,
3. Fill in the FTP related settings including server, user name and password, as well as the upload path if it is specified by the web space,



4. Click on "Save" and wait for the system to restart,
5. Click on "Application" in the left column,
6. Select the day or days of the week in "Weekly schedule" you want to upload the pictures,
7. Select "Sequential operation" and set the interval,
8. The image file uploaded to the web space is named "video.jpg". Check if the file is successfully uploaded to the correct folder,

9. Prepare a homepage with the embedded image reference to the image file uploaded via FTP in advance.

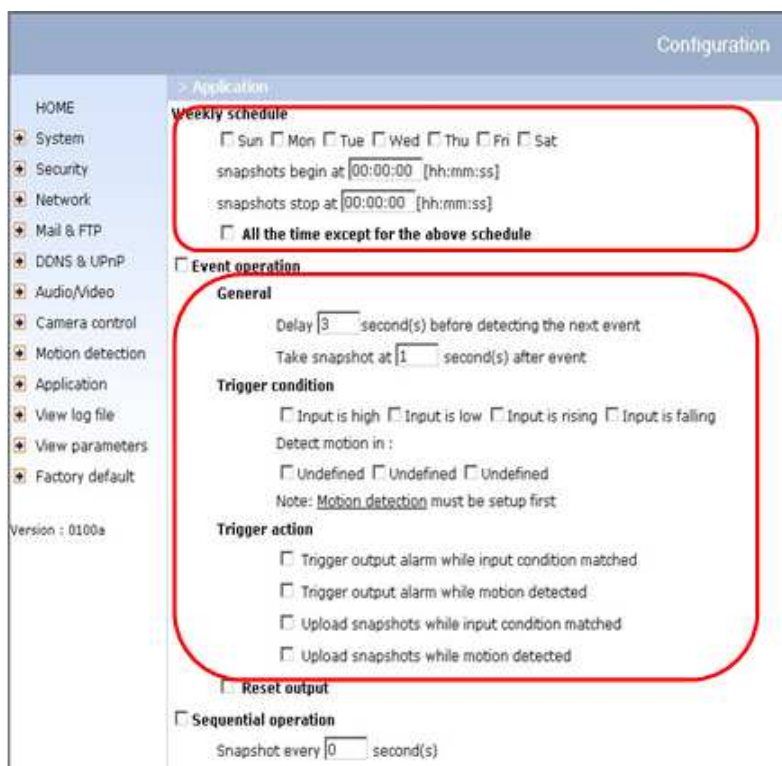
If the web space has no FTP service

An auto-refresh homepage can be used to periodically poll the newest image from the IT610 (IT610W, IT610W-LR) Network Camera. It is most efficient if using a free web space provider as the FTP service may be limiting.

Prepare an auto-refresh homepage as the following example. The URL of image is *http://"IP address of the IT610 (IT610W, IT610W-LR) Network Camera"/cgi-bin/video.jpg*. Modify the IP address according to your IT610 (IT610W, IT610W-LR) Network Camera. Define the refresh interval according to your network bandwidth for best result. If the refresh rate is too fast and there is a large number of visitors, this may overload the IT610 (IT610W, IT610W-LR) Network Camera and slows the response.

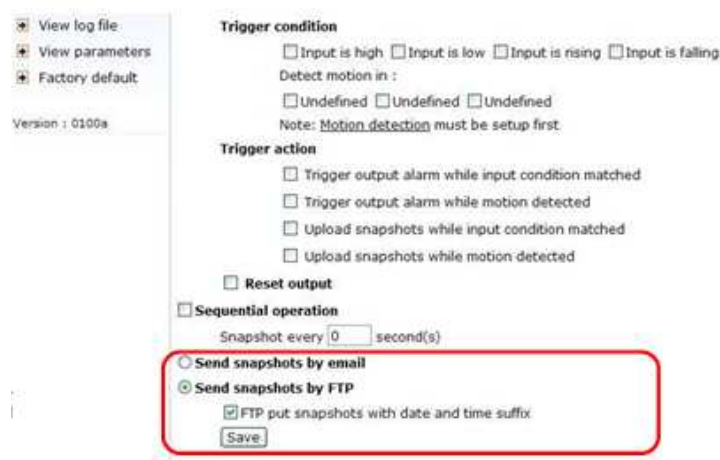
Building a Security Application

The Administrator can combine options on the application page to perform many useful security applications. There are two trigger sources coming from attached devices, such as for motion detection. There are also two kinds of actions responding to such events, including uploading snapshots over the Internet and driving other attached devices. To upload the snapshots, the User can choose either email or FTP according to user's needs. Both e-mail and FTP use the network settings on the network page. Refer to the definition section for detail configuration.



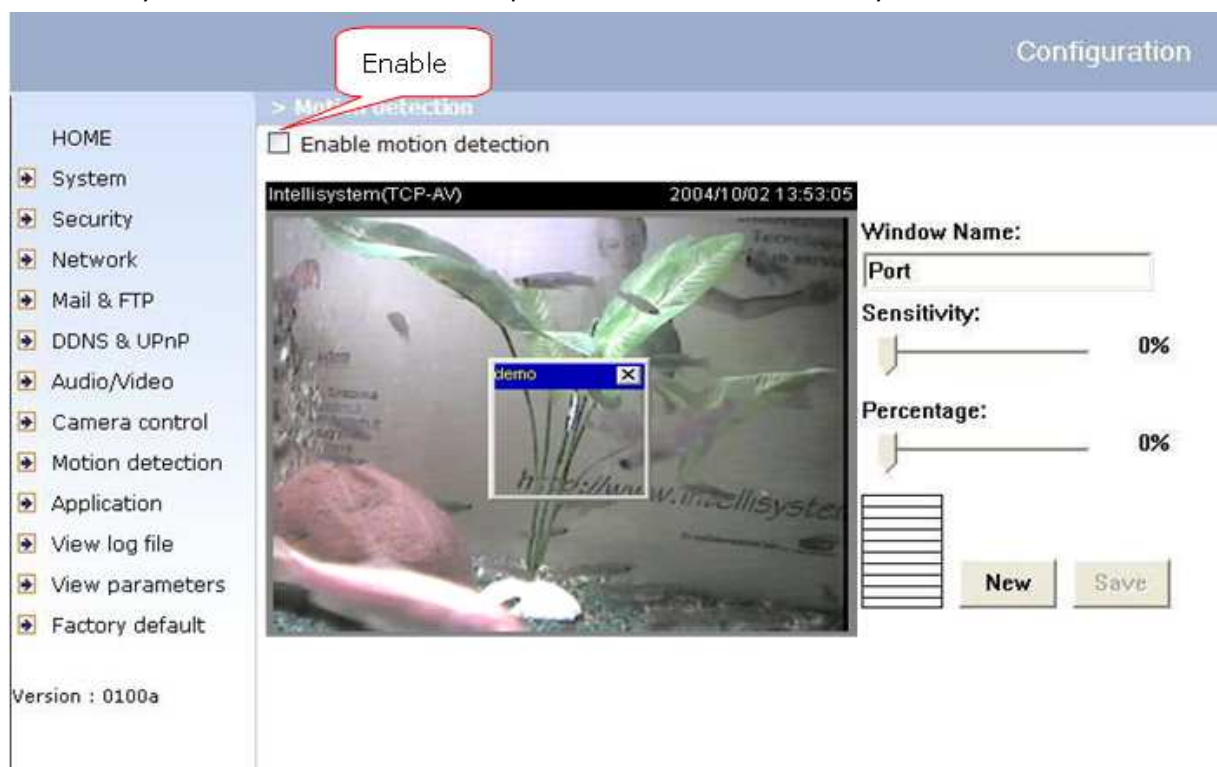
1. Click on "Configuration" on homepage,
2. Click on "Application" in the left column,
3. Check the weekdays as you need and give the period of "Snapshots begin" time and "Snapshots end" time to monitor the triggering conditions every day,
4. Check the "Event operation". The triggering condition can be set to detected motion or status of the attached device,
5. Set the delay before detecting next event to avoid continuous false alarms following the original event,

6. Set the delay to take snapshots after event to capture the direction of the moving objects,



Send snapshots when motion is detected

If no external sensor is available, the Administrator can use the built-in motion detection to monitor any movement and sends snapshots via email for security check.



7. Click on "Motion detection" in the left column,

8. Check "Enable motion detection",

9. Click on "New" to have a new window to monitor video,

10. Type in a name to identify the new window,
11. Use the mouse to click, hold, and drag the window corner to resize or the title bar to move,
12. Fine-tune using the "Sensitivity" and "Percentage" fields to best suit the camera's environment. Higher "Sensitivity" detects the slighter motion. Higher "Percentage" discriminates smaller objects,
13. Clicking on "Save" enables the activity display. Green means the motion in the window is under the watermark set by the Administrator and red means it is over the watermark,
14. Click on "Application" in the left column,
15. Check on the window name set in Step 10,
16. Check "Upload snapshots while motion detected", if e-mailing the snapshots is preferred,
17. Check "Send snapshots by email",
18. Click on "Save" to validate.

Software Revision Upgrade

Customers can obtain the up-to-date software from the web site. The upgrade function is opened to the Administrator only. To upgrade the system, follow the procedures below:

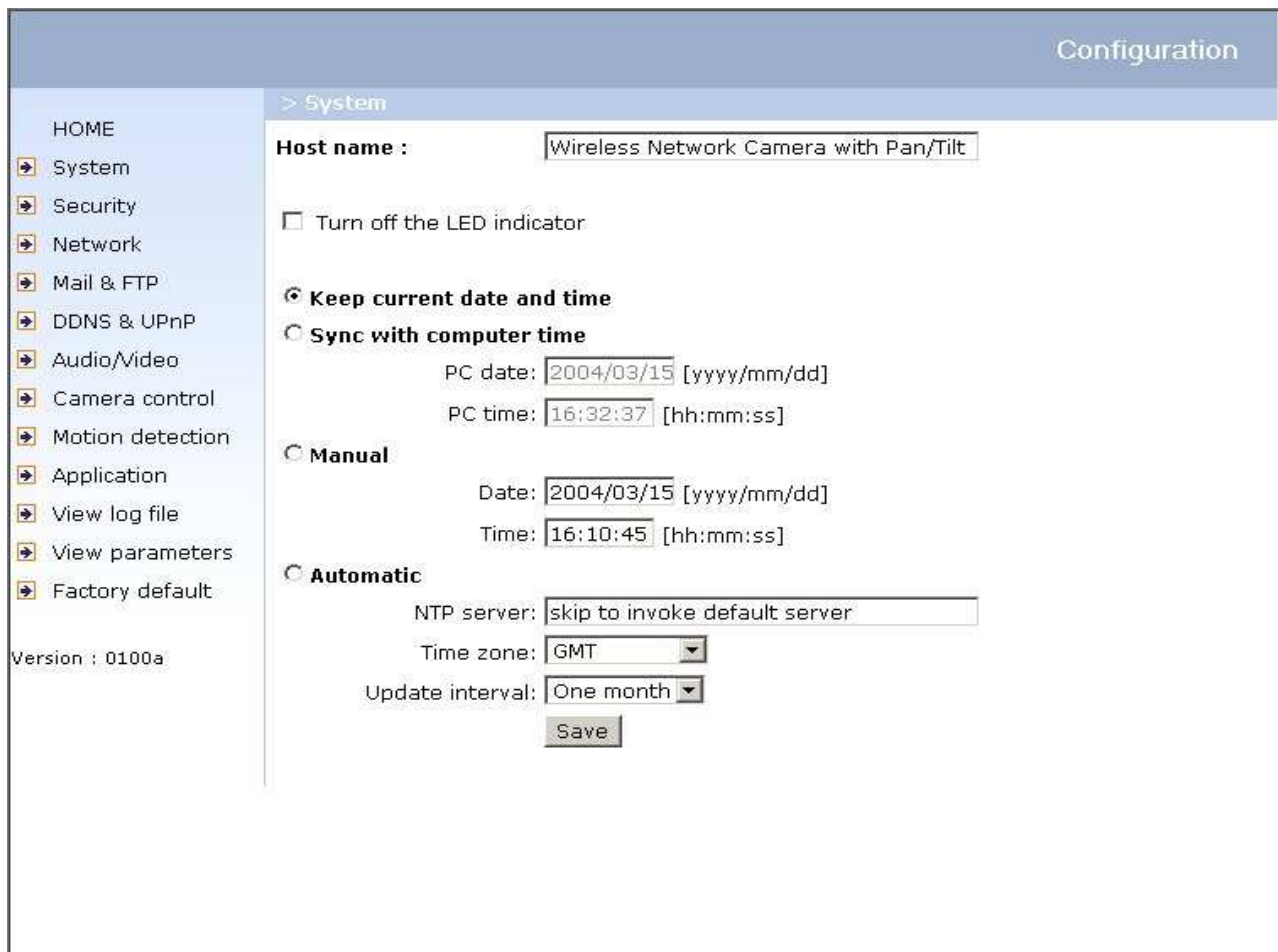
1. Download the firmware file named "FLASH.BIN" from the appropriate product folder.
2. Upload the whole file by using a common ftp client on the root folder of the IT610 (IT610W, IT610W-LR) Network Camera.
3. The whole process will finish in a few minutes and it will automatically restart the system.



If power fails during the writing process of Flash memory, the program in the memory of the Network Camera may be destroyed permanently. If the IT610-IT610W Network Camera cannot restart properly, ask your dealer for technical service.

Definitions in Configuration

Only the Administrator can access system configuration. Each category in the left column will be explained in the following pages. The bold texts are the specific phrases on the Option pages. The Administrator may type the URL below the figure to directly enter the frame page of configuration. If the Administrator also wants to set certain options through the URL, read the reference appendix for details.



The screenshot displays the configuration interface for the IT610-IT610W Network Camera. The page title is "Configuration". On the left, a navigation menu lists various settings categories: HOME, System, Security, Network, Mail & FTP, DDNS & UPnP, Audio/Video, Camera control, Motion detection, Application, View log file, View parameters, and Factory default. The "System" category is selected. The main content area shows the "System" configuration page. The "Host name" is set to "Wireless Network Camera with Pan/Tilt". There is a checkbox for "Turn off the LED indicator" which is unchecked. Under the "Time" section, there are three radio button options: "Keep current date and time" (selected), "Sync with computer time", and "Manual". The "Sync with computer time" option has input fields for "PC date" (2004/03/15) and "PC time" (16:32:37). The "Manual" option has input fields for "Date" (2004/03/15) and "Time" (16:10:45). The "Automatic" option has input fields for "NTP server" (skip to invoke default server), "Time zone" (GMT), and "Update interval" (One month). A "Save" button is located at the bottom of the configuration area.

<url> [http://<The IT610 \(IT610W, IT610W-LR\) Network Camera>/setup/config.html](http://<The IT610 (IT610W, IT610W-LR) Network Camera>/setup/config.html)

<IT610 (IT610W, IT610W-LR) Network Camera> is the domain name or original IP address of the IT610 (IT610W, IT610W-LR) Network Camera.

System Parameters

"**Host name**" The text displays the title at the top of the main page.

"**Turn off the LED indicator**" Check this option to shut off the LED beside the lens. It can prevent the camera's operation being noticed.

"**Keep current date and time**" Click on this to reserve the current date and time of the IT610 (IT610W, IT610W-LR) Network Camera. An internal real-time clock maintains the date and time even when the power of the system is turned off.

"**Sync with computer time**" Synchronizes the date and time of the IT610 (IT610W, IT610W-LR) Network Camera with the local computer. The read-only date and time of the PC is displayed as updated.

"**Manual**" Adjust the date and time according to what is entered by the Administrator. Notice the format in the related fields while doing the entry.

"**Automatic**" Synchronize with the NTP server over the Internet whenever the IT610 (IT610W, IT610W-LR) Network Camera starts up. It will fail if the assigned time-server cannot be reached.

"**NTP server**" Assign the IP address or domain name of the time-server. Leaving the text box blank connects the IT610 (IT610W, IT610W-LR) Network Camera to the default time-servers.

"**Time zone**" Adjust the time with that of the time-servers for local settings.

"**Update interval**" Select hourly, daily, weekly, or monthly update with the time on the NTP server.

Remember to click on to immediately validate the changes. Otherwise, the correct time will not be synchronized.

User Group Administration

"Root password" Change the Administrator's password by typing in the new password identically in both text boxes. The typed entries will be displayed as asterisks for security purposes. After pressing , the web browser will ask the Administrator for the new password for access.

"Add user" Type the new user's name and password and press to insert the new entry. The new user will be displayed in the user name list. There is a maximum of twenty user accounts. Each user can have the privilege to **"Permit for I/O control"** and **"Permit for PT control"**. **"Delete user"** Pull down the user list to find the user's name and press to complete.

"Permit for I/O control" Allows user to control the DO and get status of the DI.

"Permit for PT control" Allows user to aim the IT610 (IT610W, IT610W-LR) Network Camera to different targets.

"Allow 'demo' account to view" Check this to permit anyone who types in "demo" as user name. No password is needed for demo account. Note that a demo account is restricted to view only.

"Allow more viewers with snapshot mode" There can only be a maximum of 10 users to simultaneously view the video. This option allows for the 11th viewer on, the overloaded viewers, to see only still images. These still images are automatically refreshed by the interval defined below. This feature must be supported by the java script capability of the web browsers.

"Snapshot interval" defines the refresh rate of the still image in the homepage seen by the overloaded viewers.

Network Settings

Any changes made on this page will restart the system in order to validate the changes. Make sure every field is entered correctly before clicking on .

"**Reset IP address at next boot**", the default status is checked to avoid erroneous entries during installation. This can be tedious having to perform software installation whenever the IT610 (IT610W, IT610W-LR) Network Camera starts. Therefore, once the network settings, especially the IP address, have been entered correctly, uncheck this option. If this option is disabled, the IT610 (IT610W, IT610W-LR) Network Camera will skip installation at the next boot. The IT610 (IT610W, IT610W-LR) Network Camera can automatically restart and operate normally after a power outage. Users can run IP installer to check the IP address assigned to the IT610 (IT610W, IT610W-LR) Network Camera if the IP address is forgotten or using the UPnP function provided by the IT610 (IT610W, IT610W-LR) Network Camera (MS Windows XP provides UPnP function at Network Neighbors).

General

"**IP address**" This is necessary for network identification.

"**Subnet mask**" This is used to determine if the destination is in the same subnet. The default value is "255.255.255.0".

"**Default router**" This is the gateway used to forward frames to destinations in a different subnet. Invalid router setting will fail the transmission to destinations in different subnet.

"**Primary DNS**" The primary domain name server that translates hostnames into IP addresses.

"**Secondary DNS**" Secondary domain name server that backups the Primary DNS.

HTTP

"**Http port**" This can be other than the default Port 80. Once the port is changed, the User must be notified the change for the connection to be successful. For instance, when the Administrator changes the HTTP port of the IT610 (IT610W, IT610W-LR) Network Camera

whose IP address is 192.168.0.100 from 80 to 8080, the User must type in the web browser "http://192.168.0.100:8080" instead of "http://192.168.0.100".

Streaming

"Control channel port" This can be something other than the default port 5001 in order to work with the port opened by the firewall.

"Audio channel port" This can be something other than the default port 5002 in order to work with the port opened by the firewall.

"Video channel port" This can be something other than the default port 5003 in order to work with the port opened by the firewall.

"Improve audio quality in low bandwidth environment" If the IT610 (IT610W, IT610W-LR) Network Camera seems to work in a low bandwidth network environment, the User can use this option to see if audio quality can be improved by sacrificing some real-time synchronization.

WLAN Configuration

"SSID" (Service Set Identifier), it is a name that identifies a wireless network. Access Points and wireless clients attempting to connect to a specific WLAN (Wireless Local Area Network) must use the same SSID. The default setting is **default**. *Note: The maximum length of SSID is 32 single-byte characters and SSID can't be any of ", <, > and space character.*

"Wireless mode" Clicking on the pull-down menu to select from the following options:

"Infrastructure" Make the IT610 (IT610W, IT610W-LR) Network Camera connect to the WLAN via an Access Point. (The default setting)

"Ad-Hoc" Make the IT610 (IT610W, IT610W-LR) Network Camera connect directly to a host equipped with a wireless adapter in a peer-to-peer environment.

"Channel" While in infrastructure mode, the channel is selected automatically to match the channel setting for the selected Access Point. In Ad-Hoc mode, the channel must be manually set to the same channel for each wireless adapter. The default channel setting depends on the installed region.

"TX rate" This field is for selecting the maximum transmission rate on the network. The default setting is "auto", that is the IT610 (IT610W, IT610W-LR) Network Camera will try to connect to the other wireless device with highest transmitting rate.

"Preamble", either **"Long preamble"** or **"Short preamble"** defines the length of the CRC block (Cyclic Redundancy Check is a common technique for detecting data transmission errors) for communication between the Access Point and the roaming wireless device. Long Preamble is the default setting. *Note: High network traffic areas should use the shorter preamble type.*

"Data encryption" Checking the box to enable the data encryption. By default it is disabled.

"Auth. Mode" Choosing one of the following modes, (Auto is the default setting)

"Auto" – Will automatically decide the authentication mode of the wireless client.

"Shared" – allows communication only with other devices with identical WEP settings.

"Open" – communicates the key across the network.

"Key length" The administrator can select the key length among 64, 128 or 256 bits. 64bits is the default setting.

"Key format" Hexadecimal or ASCII. **"HEX"** is the default setting.

"HEX" digits consist of the numbers 0~9 and the letters A-F.

"ASCII" is a code for representing English letters as numbers from 0-127 except ", <, > and space characters that are reserved.

"Network Key" Entering a key in either hexadecimal or ASCII format. When selecting different key length, acceptable input length is listed as following:

64 bits key length: 10 Hex digits or 5 characters.

128 bites key length: 26 Hex digits or 13 characters.

256 bits key length: 58 Hex digits or 29 characters.

Note: When 22("), 3C(<) or 3E(>) are input in network key, the key format can't be changed to ASCII format.

Mail & FTP

SMTP

"SMTP (mail) server 1" The domain name or IP address of the external email server.

"Recipient email address 1" The email address of the recipients for snapshots or log file. Multiple recipients must be separated by semicolons, `;`.

"SMTP (mail) server 2" The domain name or IP address of another email server once the previous server is unreachable.

"Recipient email address 2" The email addresses of the recipients for the backup server.

"Return email address" The return email address used in the event the mails fail to be sent out.

FTP

"Local FTP server port" This can be other than the default Port 21. The user can change this value from 1 to 65535. After the change, the external FTP client program must change the server port of connection accordingly.

"1st FTP server" The domain name or the IP address of the external FTP server. The following user settings must be correctly configured for remote access.

"1st FTP user name" Granted user name on the external FTP server.

"1st FTP password" Granted password on the external FTP server.

"1st FTP remote folder" Granted folder on the external FTP server. The string must conform to that of the external FTP server. Some FTP servers cannot accept preceding slash symbol before the path without virtual path mapping. Refer to the instructions for the external FTP server for details. The folder privilege must be open for upload.

"Primary FTP passive mode" The IT610 (IT610W, IT610W-LR) Network Camera is located inside the network protected by a firewall, data connection for FTP may be prohibited. By selecting passive mode, the FTP can bypass the rule and allow snapshot upload to proceed. If the passive mode is selected, the IT610 (IT610W, IT610W-LR) Network Camera can automatically attempt for active mode, if the external FTP server does not support passive mode.

"2nd FTP server" The domain name or IP address of the backup external FTP server.


"**2nd FTP user name**" Granted user name on the backup FTP server.

"**2nd FTP password**" Granted password on the backup FTP server.

"**2nd FTP remote folder**" Granted folder on the backup FTP server.

"**Secondary FTP passive mode**" Passive mode setting for the backup FTP server.

address is 192.168.0.100 from 80 to 8080, the User must type in the web browser "http://192.168.0.100:8080" instead of "http://192.168.0.100".

 Some invalid settings may cause the system failing to respond. Change the configuration only if necessary and consult with your network supervisor or experienced users for correct settings. Once the system has lost contact, refer to Appendix A for reset and restore procedures.

Video Codec Parameters

"**Text on video**" The text will be displayed in the black bar above the video window with a timestamp. The timestamp is captured from the date and time of the IT610 (IT610W, IT610W-LR) Network Camera that is maintained by a built-in real-time clock.

"**Color**" Select either for color or monochrome video display.

"**Size**" There are three options for two video sizes. "Half" is the quarter size of "Normal". "**Half x 2**" has the same video size as "Normal" but of a lesser quality, while consuming less network bandwidth.

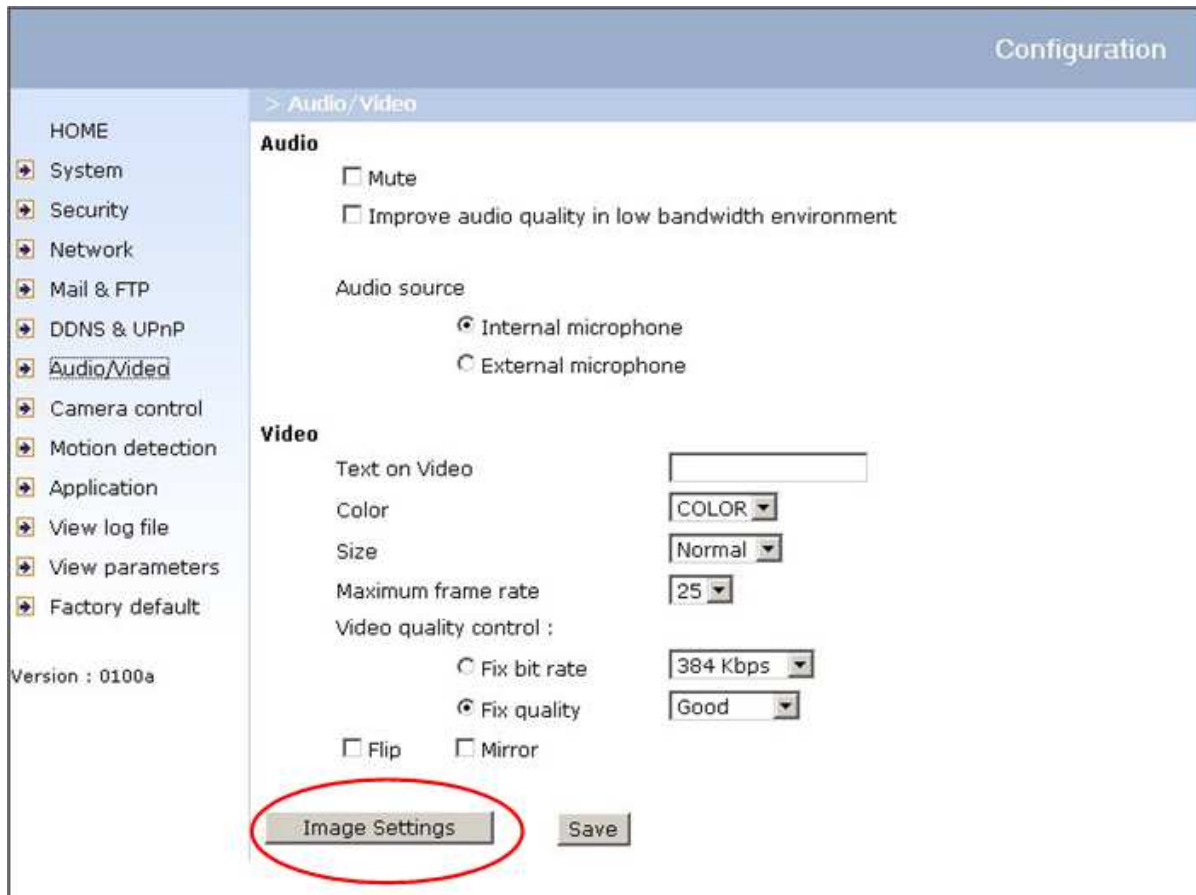
"**Maximum frame rate**" This limits the maximal refresh frame rate, which can be combined with the "**Video quality control**" to optimize bandwidth utilization and video quality. If the User wants to fix the bandwidth utilization regardless of the video quality, choose "**Fix bit rate**" and select the desired bandwidth. The video quality may be poor due to the sending of maximal frame rate within the limited bandwidth when images are moving rapidly. Consequently, to ensure detailed video quality (quantization rate) regardless of the network, it will utilize more bandwidth to send the maximal frames when images change drastically.

"**Flip**" Vertically rotate the video.

"**Mirror**" Horizontally rotate the video. Check options both if the IT610 (IT610W, IT610W-LR) Network Camera is installed upside down.

"**White balance**" Adjust the value for best color temperature.

Image Setting Click on this button to pop up another window to tune "Brightness", "Contrast", "Hue" and "Saturation" for video compensation. Each field has eleven levels ranging from -5 to +5. The User may press **preview** to fine-tune the image. When the image is O.K., press **Save** to set the image settings. **restore** Click on this to recall the original settings without incorporating the changes.



The screenshot shows the 'Configuration' page for the device, specifically the 'Audio/Video' section. The left sidebar contains a navigation menu with options like 'HOME', 'System', 'Security', 'Network', 'Mail & FTP', 'DDNS & UPnP', 'Audio/Video', 'Camera control', 'Motion detection', 'Application', 'View log file', 'View parameters', and 'Factory default'. The main content area is titled '> Audio/Video' and contains the following settings:

- Audio**
 - Mute
 - Improve audio quality in low bandwidth environment
 - Audio source
 - Internal microphone
 - External microphone
- Video**
 - Text on Video: [Text input field]
 - Color: [COLOR dropdown]
 - Size: [Normal dropdown]
 - Maximum frame rate: [25 dropdown]
 - Video quality control:
 - Fix bit rate: [384 Kbps dropdown]
 - Fix quality: [Good dropdown]
 - Flip
 - Mirror

At the bottom of the configuration area, there are two buttons: 'Image Settings' (which is circled in red) and 'Save'.

Motion Detection

"**Enable motion detection**" Check this option to turn on motion detection.

New Click on this button to add a new window. At most three windows can exist simultaneously. Use the mouse to click, hold, and drag the window frame to resize or the title bar to move. Clicking on the 'x' at the upper right-hand corner of the window to delete the window. Remember to save in order to validate the changes.

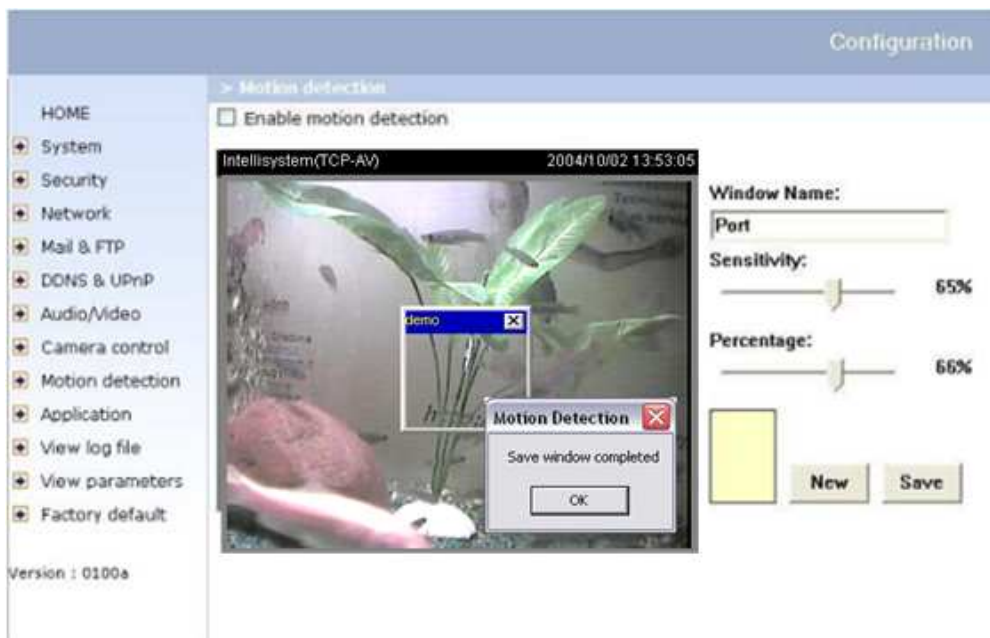
Save Click on this button to save the related window settings. A graphic bar will rise or fall depending on the image variations. A green bar means the image variation is under monitoring level and a red bar means the image variation is over monitoring level. When the bar goes red, the detected window will also be outlined in red. Going back to the homepage, the monitored window is hidden but the red frame shows when motion is detected.

"**Window Name**" The text will show at the top of the window.

"**Sensitivity**" This sets the endurable difference between two sequential images.

"**Percentage**" This sets the space ratio of moving objects in the monitoring window. Higher sensitivity and small percentage will allow easier motion detection.

The following figure shows the screen when **Save** is clicked.



Application Setup

Weekly Schedule

"Sun" ~ "Sat" Select the days of the week to perform the following operations.

"Snapshots begin at" Set the time to start operations. **"Snapshots stop at"** Set the time to stop operations.

Setting identical begin time and stop time means 24-hour operation.

Event Operation

"Delay second(s) before detecting next event" Set the time delay before restarting to check on the triggering condition when the current condition is triggered.

"Take snapshots at second(s) after event" After the camera has taken a snapshot when a condition is triggered, another snapshot will be taken after this configured interval, in seconds.

"Trigger condition" There are four conditions relative to the digital input and the three windows for motion detection. More than one condition can be selected at once. Select the appropriate digital input condition that suits the characteristics of the external device. "high", "low" selects level-triggering via external voltage input. "rising", "falling" is for edge-triggering. There are three windows for motion detection each can be assigned a name. If motion detection has not been set up, **"undefined"** will be shown instead of the window title. If this happens, clicking on "Motion detection" and a note will show to direct the User to the configuration page for motion detection.

"Trigger action" There are four options for two types of action. More than one condition can be selected at once. While choosing to trigger an output alarm, the digital output will short both pins and complete the external device's circuit. The normal state is open. Either email or FTP can be used to command uploading snapshots. The snapshot names will be "vpre.jpg", "vtrg.jpg", and "vpos.jpg", respectively. They stand for the snapshots, before event, right upon event, and after event. The date and time suffix may also be added as an option. Confirm the external mail or FTP server settings in the network configuration.

"Reset output" Select and save this option to reset the external device at the digital output to return to the original state.

Sequential Operation

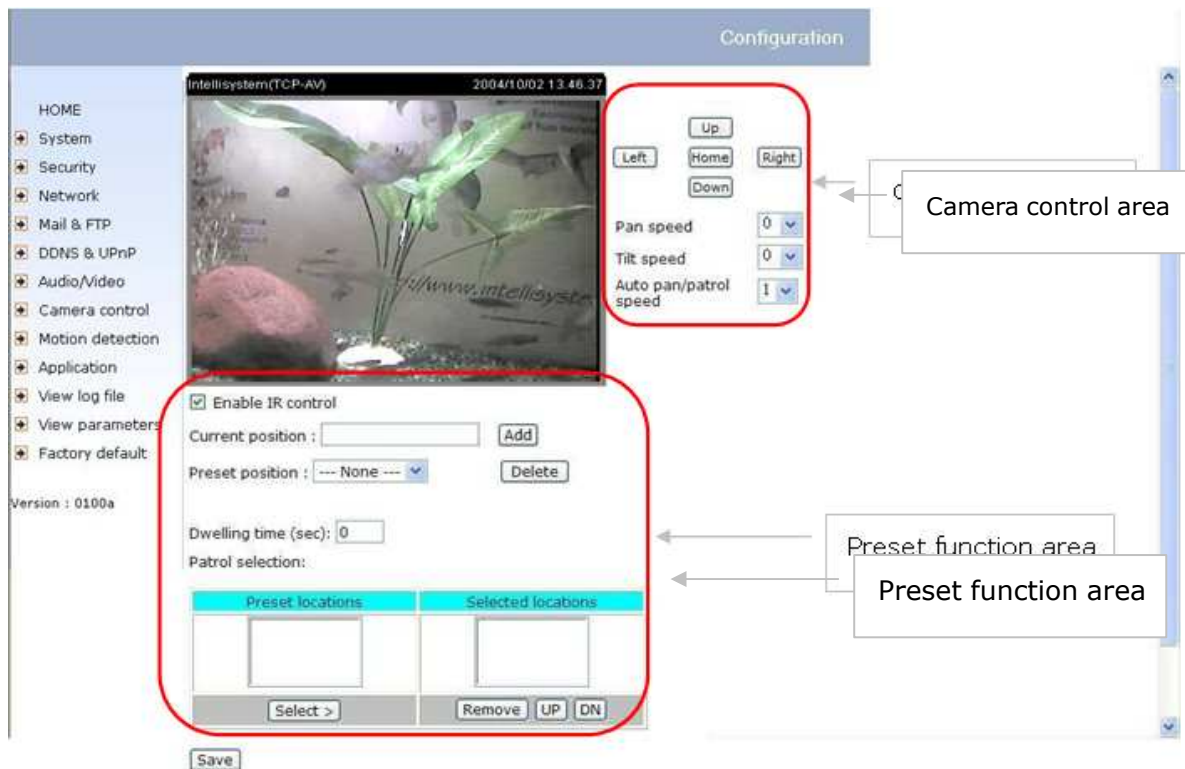
"Snapshot every second(s)" The IT610 (IT610W, IT610W-LR) Network Camera will send snapshots at the specified intervals to the external server using the method selected below. Remember: This operation is still subject to the conditions set in the weekly schedule.

"Send snapshots by email" This selects the uploading method following the intervals set above. The snapshot named "video.jpg" will be attached in the email with the subject title "Periodic snapshots".

"Send snapshots by FTP" The snapshots will be uploaded to the external FTP server with the file name defined in the next option. This can also be used to refresh the captured images stored in the external web server to build creative homepages.

"FTP put snapshots with date and time suffix" This option sets up the snapshot capture date and time, which can be used to easily differentiate the snapshot file names in either the sequential or event operation. For instance, "video@20030102030405.jpg" means the JPEG image was captured in the year 2003, January the 2nd, at 3 o'clock, 4 minute, and 5 second. If this suffix is omitted, the file named "video.jpg" on the external FTP server will be refreshed at the specified interval.

Camera Control



On the Camera Control page, there are two main function control areas:

Camera Control Area

The pan and tilt functions can be controlled with these buttons. The "Left" button aims the camera to the left; the "Right", "Up", and "Down" buttons aim the camera accordingly. The "Home" button aims the camera to the center.

"Pan speed" This controls the range of the horizontal movement of the camera. The greater the value, the greater angular movement when performing the "Left" or "Right" functions.

"Tilt speed" This controls the range of the vertical movement of the camera. The greater the value, the greater angular movement when performing the "Up" or "Down" functions would be.

"Auto pan/patrol speed" This defines the speed of panning and patrol, the greater the value, the faster the speed.

Preset Function Area

"Enable IR control" Checking this box allows the Administrator to enable the IR controller to move the aim of the camera. To allow controls only through URL commands or web pages, leave this box unchecked.

"Current position", If the User wants to save the current view as a preset location, enter a name for each of the current video view at "current position" and click on the "Add" button. The camera allows for 20 preset locations.

"Preset position" This keeps a list for preset positions. Clicking on the "Delete" button will remove the current selected position from the preset list.

"Dwelling time" The value set here specifies:

1. The stop time of each preset location during auto patrol of the IT610 (IT610W, IT610W-LR) Network Camera.
2. The stay time at the most left and the most right positions when the IT610 (IT610W, IT610W-LR) Network Camera is doing auto panning.

"Patrol selection", After the User has saved a list of preset positions, the "Preset locations" box will also keep a list of the preset positions. And once the "Select>" button is clicked, the "Selected location" box will keep a list of the patrol stops. The "Remove" button removes the preset position from the patrol stops. The "UP", "DOWN" buttons adjust the order of the patrol stops. Several preset positions can be added to the patrol stops. The camera can accept up to 40 patrol stops.

"Save" button

The button is valid for "Pan speed", "Tilt speed", "Auto pan/patrol speed", "Enable IR control", "Dwelling time" and "Patrol selections". In other words, after changing these settings, and the "Save" button is not clicked, the new setting of the camera will not take effect.

UPnP and DDNS Settings

"Enable DDNS" This option turns on the DDNS function.

"Provider" The provider list contains four hosts that provide DDNS services. Please connect to the service provider's website to make sure the service charges.

"Host name" If the User wants to use DDNS service, this field must be filled. Please input the hostname that is registered in the DDNS server.

"Username/E-mail" The Username or E-mail field is necessary for logging in the DDNS server or notify the User of the new IP address. **Note:** when this field is input as "Username" the following field must be input as "Password".

"Password/Key" Please input the password or key to get the DDNS service.

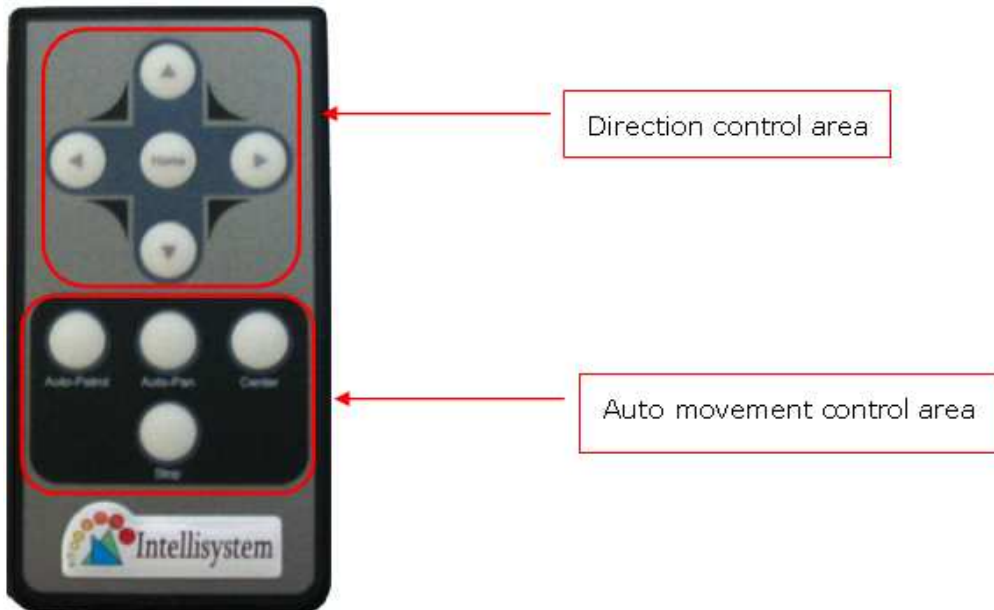
"Enable UPnP" This turns on or off the UPnP function. When UPnP is turned off, the camera cannot be found through network neighbors in MS Windows XP. If the UPnP network component is installed in Windows XP, the hostname of the IT610 (IT610W, IT610W-LR) Network Camera will be shown with bracketed IP address in the Network neighbors. Ex: IT610 (IT610W, IT610W-LR) Network Camera with Pan/Tilt (96). That is: The hostname of the IT610 (IT610W, IT610W-LR) Network Camera is "IT610 (IT610W, IT610W-LR) Network Camera with Pan/Tilt", and the IP address of the IT610 (IT610W, IT610W-LR) Network Camera is xxx.xxx.xxx.96, depends on the last value of the IP address assigned to the IT610 (IT610W, IT610W-LR) Network Camera.

"Save" Click on this button to save current settings for the DDNS service and UPnP function.

Remote Controller

The IT610 (IT610W, IT610W-LR) Network Camera with Pan/Tilt provides a remote controller to command the camera's pan/tilt and other functions. The direction control part provides the function as on the main web page.

The Pan/Patrol/Stop functions are also the same as on the main web page.



"Auto Patrol" This button commands the camera to patrol between the preset positions on the patrol list that was set on the "Camera control page". After each patrol cycle, the camera stops at the original starting position. **"Auto Pan"** This button commands the camera to pan from the current position to the left most or right most and back. After panning both horizontal end positions, the camera would stop at the original starting position.

"Center" This calibrates the camera's position to aim at the center as the camera boots up.

"Stop" This stops the auto movements (auto pan & auto patrol) of the camera.

Viewing System Log

Click on the link on the configuration page to view the system log file. The content of this file provides useful information about configuration and connections after system boot-up.

Viewing System Parameters

Click on this link on the configuration page to view the entire system's parameter set. The content is the same as those in CONFIG.INI.

Factory Default

"Factory default"

Click on this link on the configuration page to restore factory default settings. Any changes made so far will be lost and the system will be reset to the initial factory settings. After clicking on the "Restore" button and make confirmation, the system will restart and require the installer program to set up the network again.

"Calibrate"

Recalibrate the home position to the default center to recover the tolerance caused by some external forces. This function is the same as the "**Center**" button on the Remote Controller. Please note that there is no confirming message box after clicking on the "**Calibrate**" button, the IT610 (IT610W, IT610W-LR) Network Camera will calibrate immediately.

Appendix

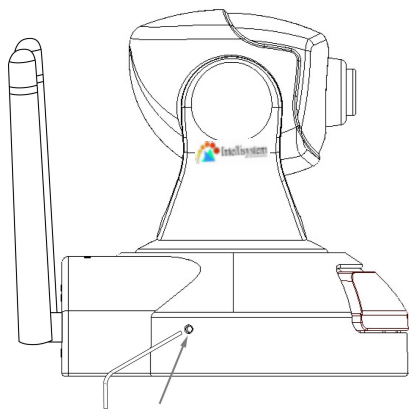
A. Troubleshooting

Status LED

After powering up, the IT610 (IT610W, IT610W-LR) Network Camera performs a self-diagnostic to detect any hardware defects. The following table lists the LED patterns in general. In case of any fatal error, the LED will blink in a pattern other than those below.

Condition	LED color
During self-diagnostic after power on	Blink in interchanged green and red
Ethernet signal is lost	Red LED is blinking till Ethernet is detected
Before network is setup	Steady green till IP address is confirmed
After network is setup	Blink green every second
Any hardware failure	Other patterns

Reset and Restore




At the left side of the camera there is a button hidden in the pinhole as shown in the picture. It is used to reset the system or restore the factory default settings. Sometimes resetting the system sets the system back to normal state. If the system problems remain after reset, restore the factory settings and install again.

RESET: Poke the wrench to click on the button.

RESTORE:

1. Poke the wrench to press on the button continuously.
2. Wait for self-diagnostic to run twice.
3. Withdraw the wrench as soon as the second self-diagnostic starts.

 Restoring the factory defaults will erase any previous settings. Reset or restore the system after power on.

B. Frequently Asked Questions

Q What if I forget my password?

A After the Administrator's password has been assigned, every access to the IT610 (IT610W, IT610W-LR) Network Camera needs authentication. If you are one of the managed users, you have to ask the Administrator for the password. If you are the Administrator, there is no way to recover the root password except by restoring the factory default settings. Refer to Appendix A for the procedures.

Q Why can I not watch video from the IT610 (IT610W, IT610W-LR) Network Camera after it is authenticated?

A There are many possible scenarios regarding this problem,

1. If you have just installed the IT610 (IT610W, IT610W-LR) Network Camera and are unable to watch the video, check if the heartbeat LED is blinking or the lens cap is off. If the heartbeat LED is dim, perform the software installation again.
2. If the IT610 (IT610W, IT610W-LR) Network Camera is well installed and you are accessing the IT610 (IT610W, IT610W-LR) Network Camera for the first time using Internet Explorer, adjust the security level of Internet Explorer to allow installation of plug-ins.
3. If the problem still exists after adjusting, and the message over the image window is showing "connecting", the network traffic may be too crowded.

Q What is the plug-in for?

A The plug-in provided by the IT610 (IT610W, IT610W-LR) Network Camera is used to display motion pictures and audio in Internet Explorer. If your system does not allow installation of any plug-in software, the security level of the web browser may need to be lowered. It is recommended that you consult your network supervisors in your office regarding adjustment of the security level. Software installation may be regulated in some offices.

Q Why is the timestamp different from the system time of my PC or notebook?

A The timestamp is based on the system time of the IT610 (IT610W, IT610W-LR) Network Camera. It is maintained by a real-time clock inside and can be automatically synchronized with the time-server if the IT610 (IT610W, IT610W-LR) Network Camera is connected to the Internet and the function is enabled. Differences of several hours may result from the time zone setting.

Q Can I install it on ceiling?

A Yes. There are flip and mirror options in the video configuration page to correct the images for upside down installation.

Q The image is not clear enough.

A Rotate the lens to adjust the focus after the IT610 (IT610W, IT610W-LR) Network Camera has been installed in the proper position. The image settings and white balance can be fine tuned to achieve the best visual effect. Also notice the power line frequency must match the local utility to synchronize and minimize the effect of flickering florescent lights.

Q Why does the image not refresh regularly?

A Some anti-virus programs filter the received web content. It takes time to perform data examination and affect the streaming application such as that of the IT610 (IT610W, IT610W-LR) Network Camera. However, it only affects the HTTP mode of the IT610 (IT610W, IT610W-LR) Network Camera. If the network allows only HTTP mode, disable the web filtering function of the anti-virus program temporarily. During this period, the User should be aware of the risk of malicious network activity.

Q I have opened motion detection windows but it cannot work.

A If the motion detection windows are set up and names are given, check to see if the function is checked on the first line. While it is enabled, adjust the sensitivity and percentage to monitor the level indicator for best results.

Q I cannot hear any sound while watching.

A If there is "V_ONLY" shown above the image, click on connection type to uncheck "Disable audio". If there is "V" shown instead of "AV", the sound card in your PC may not have been properly installed. If "AV" is shown, check the audio source of the IT610 (IT610W, IT610W-LR) Network Camera, make sure you are using internal or external microphone.

Q How many users are allowed to watch the IT610 (IT610W, IT610W-LR) Network Camera at the same time?

A Too many users requesting the real-time multimedia content will jam the network. For best results, the IT610 (IT610W, IT610W-LR) Network Camera is designed to accommodate a maximum of ten (10) users to watch and listen at the same time. For a larger number of users,

it is recommended to build another web server to host the retrieved contents from the IT610 (IT610W, IT610W-LR) Network Camera.

Q How fast is the video rate of the IT610 (IT610W, IT610W-LR) Network Camera?

A The MPEG4 codec engine can process up to 30 frames per second internally. However, the total performance is subject to many coefficients such as:

1. Network throughput,
2. Bandwidth share,
3. Number of users,
4. The complicated/detailed objects and movement in view,
5. The power of your PC or notebook computer that is responsible for displaying images.

In general, the transfer rate in a general local network environment can achieve over 200 kilobytes per second and approximately 10 to 20 pictures per second from a regular environment.

Q How can I keep the IT610 (IT610W, IT610W-LR) Network Camera as private as possible?

A The IT610 (IT610W, IT610W-LR) Network Camera is designed for surveillance purposes and has many flexible interfaces. The user authentication and special confirmation in installation can keep the IT610 (IT610W, IT610W-LR) Network Camera from unauthorized access. You may also change the HTTP port to a non-public number. The demo account is good to separate guests from normal users and thus you can easily block the guests anytime. You can check the system log to examine any abnormal activities and trace the origins.

Q Why can I not access the IT610 (IT610W, IT610W-LR) Network Camera when I set up some options in the application?

A Since the IT610 (IT610W, IT610W-LR) Network Camera is a "IT610 (IT610W, IT610W-LR) network camera", any incorrect network settings will make it inaccessible. If this happens, restore the factory default settings following the procedures in Appendix A.

C. URL Commands of the IT610 (IT610W, IT610W-LR)

Network Camera

For some customers who already have their own web site or web control application, the IT610 (IT610W, IT610W-LR) Network Camera can be easily integrated through convenient URLs. This section lists the commands in URL format corresponding to the basic functions of the IT610 (IT610W, IT610W-LR) Network Camera.

Capture Update Snapshot of JPEG Image

`/cgi-bin/video.jpg`

The IT610 (IT610W, IT610W-LR) Network Camera will return the most up-to-date snapshot in JPEG format.

Query Status of the Digital Input

`/cgi-bin/getdi.cgi`

The IT610 (IT610W, IT610W-LR) Network Camera will return the status of digital input.

Drive the Digital Output

`/cgi-bin/setdo.cgi?do=<state>`

The state is either "h" or "l". "h" means high, that is NC is connected with COMMON and "l" means "low" that is NO is connected with COMMON.

For instance, typing <http://192.168.0.201/cgi-bin/setdo.cgi?do=h> in the address bar of the web browser will command the IT610 (IT610W, IT610W-LR) Network Camera, with IP address of 192.168.0.201, to set digital output to connect to NC with COMMON.

Restore Factory Default Settings

`/setup/restore.cgi`

The IT610 (IT610W, IT610W-LR) Network Camera will automatically restart after restoring factory default configurations.

Restart System

`/setup/reset.cgi`

Restart the IT610 (IT610W, IT610W-LR) Network Camera without warning.

Page URL

The configuration page has a frame layout including an option list frame and an option page frame. Referenced URLs, except for the configuration page, direct users to the option page frame only. Some pages, such as image quality setting and preset setting, are opened in new windows for preview.

Only the Administrator can access these URLs.

Homepage name	Referenced URL
Client settings page	/client.html
configuration page	/setup/config.html
system option	/setup/system.html
security option	/setup/security.html
network option	/setup/network.html
DDNS & UPnP option	/setup/ddns.html
audio/video option	/setup/video.html
camera control option	/setup/ptframe.html
motion detection	/setup/motion.html
image quality option	/setup/image.html
application option	/setup/app.html
system log	/setup/logfile.html
system parameters	/setup/parafire.html
set factory default	/setup/factory.html

System Resource URL

There are some images used on the homepage when the homepage layout is in image mode. The Administrator may use the following links to show the images saved in the IT610 (IT610W, IT610W-LR) Network Camera on another page.

Resource name	Referenced URL
system logo image	/pic/logo.gif
background image	/pic/wallppr.jpg

General Format of Command URL

Every configuration can be set through URL with the POST method by the Administrator only.

<general format>

URL[?[name=value][&name=value].....]

<method>

POST

<authorized user>

root

System Configuration URL

URL: /setup/system.cgi

NAME	VALUE	DESCRIPTION
host	<text string shorter than 15 characters>	system name
ledoff	yes	turn off front LED
	no	turn off front LED
method	keep	keep date and time unchanged
	auto	use NTP server to synchronize
	manu	directly adjust date and time
date	<yyyy/mm/dd>	year, month and date separated by slash
time	<hh:mm:ss>	hour, minute and second separated by colon
ntp	<domain name or IP address>	NTP server
zone	-12 ~ 12	time zone, 8 means GMT +8:00
updateInterval	one hour	Synchronize with NTP hourly
	one day	Synchronize with NTP daily
	one week	Synchronize with NTP weekly
	One month	Synchronize with NTP monthly

Security Configuration URL

URL: /setup/security.cgi

NAME	VALUE	DESCRIPTION
rootpass	<text string shorter than 15 characters>	change root password
username	<text string shorter than 15 characters>	add new user
userpass	<text string shorter than 15 characters>	new user's password
deluser	<text string shorter than 15 characters>	existing user name
action	<blank>	validate demo users with "open"
open	yes	grant for demo account
	no	prohibit for demo account
dido	yes	permission for DIDO access
	no	prohibit for DIDO access

Network Configuration URL

URL: /setup/network.cgi

NAME	VALUE	DESCRIPTION
reset	yes	enable installation at next boot
	no	disable installation at next boot
ip	<IP address>	The IT610 (IT610W, IT610W-LR) Network Camera's IP address
subnet	<IP address>	subnet mask
router	<IP address>	default gateway
domain	<text string shorter than 40 characters>	domain name of the IT610 (IT610W, IT610W-LR) Network Camera

dns1	<IP address>	primary DNS server
dns2	<IP address>	secondary DNS server
smtp1	<domain name or IP address>	primary SMTP server
mailto1	<string shorter than 80 characters>	mail recipient address
smtp2	<domain name or IP address>	secondary SMTP server
mailto2	<text string shorter than 80 characters>	mail recipient address
returnemail	<text string shorter than 80 characters>	return email address
ftpp	<number less than 65535>	FTP port
ftp1	<domain name or IP address>	primary FTP server
ftpuser1	<text string shorter than 15 characters>	user name for primary FTP server
ftppass1	<text string shorter than 15 characters>	password for primary FTP server
ftpfolder1	<text string shorter than 40 characters>	upload folder in primary FTP server
ftp2	<domain name or IP address>	secondary FTP server
ftpuser2	<text string shorter than 15 characters>	user name for secondary FTP server
ftppass2	<text string shorter than 15 characters>	password for secondary FTP server
ftpfolder2	<text string shorter than 40 characters>	upload folder in secondary FTP server
http	<number less than 65535>	HTTP port
controlport	<number less than 65535>	control Channel port
videoport	<number less than 65535>	video Channel port
audioport	<number less than 65535>	audio Channel port
lowband	yes	optimal for the low bandwidth
	no	keep the original way

DDNS & UPnP Configuration URL

URL: /setup/ddns.cgi

NAME	VALUE	DESCRIPTION
enddns	anything	Enable DDNS function. This option must be resent whenever the URL is called, if DDNS function is to be enabled.
provider	1	DynDDNS.org(Dynamic)
	2	DynDDNS.org(Custom)
	3	TZO.com
	4	dhs.org
host	<the hostname>	The hostname of the IT610 (IT610W, IT610W-LR) Network Camera
usermail	username or mail	The login username of DDNS server or the email address registered in DDNS server.
passkey	password or key	The login password of DDNS server or the key given by the DDNS server.
enupnp	anything	Enable UPnP function. This option must be resent whenever the URL is called, if UPnP function is to be enabled.

Mail&FTP Configuration URL

URL: /setup/mailftp.cgi

NAME	VALUE	DESCRIPTION
smtp1	<domain name or IP address>	primary SMTP server
mailto1	<string shorter than 80 characters>	mail recipient address
mailname1	<max 14 characters>	first account name in SMTP server
mailpass1	<max 14 characters>	first account password in SMTP server
smtp2	<domain name or IP address>	secondary SMTP server
mailto2	<text string shorter than 80 characters>	mail recipient address

mailname2	<max 14 characters>	second account name in SMTP server
mailpass2	<max 14 characters>	second account password in SMTP server
returnemail	<text string shorter than 80 characters>	return email address
mailto1	<string shorter than 80 characters>	mail recipient address
smtp2	<domain name or IP address>	secondary SMTP server
mailto2	<text string shorter than 80 characters>	mail recipient address
returnemail	<text string shorter than 80 characters>	return email address
ftpp	<number less than 65535>	FTP port
ftp1	<domain name or IP address>	primary FTP server
ftpuser1	<text string shorter than 15 characters>	user name for primary FTP server
ftppass1	<text string shorter than 15 characters>	password for primary FTP server
ftpfolder1	<text string shorter than 40 characters>	upload folder in primary FTP server
ftp2	<domain name or IP address>	secondary FTP server
ftpuser2	<text string shorter than 15 characters>	user name for secondary FTP server
ftppass2	<text string shorter than 15 characters>	password for secondary FTP server
ftpfolder2	<text string shorter than 40 characters>	upload folder in secondary FTP server

Audio/Video Configuration URL

URL: /setup/video.cgi

NAME	VALUE	DESCRIPTION
------	-------	-------------

text	<text string shorter than 15 characters>	enclosed caption
size	1	half
	2	half x 2
	3	normal
color	B/W	monochrome
	<other than B/W>	color
quality	fixb	fix bit rate
	<other than fixb>	fix quantization
quan	1	lowest quality of video
	2	lower quality of video
	3	normal quality of video
	4	higher quality of video
	5	highest quality of video
bitrate	64000	set bit rate to 64K bps
	128000	set bit rate to 128K bps
	256000	set bit rate to 256K bps
	384000	set bit rate to 384K bps
	512000	set bit rate to 512K bps
	768000	set bit rate to 768K bps
	1000000	set bit rate to 1000K bps
	1200000	set bit rate to 1200K bps
frame	1	set maximum frame rate to 1 fps
	2	set maximum frame rate to 2 fps
	3	set maximum frame rate to 3 fps
	5	set maximum frame rate to 5 fps
	10	set maximum frame rate to 10 fps
	15	set maximum frame rate to 15 fps
	20	set maximum frame rate to 20 fps
	25	set maximum frame rate to 25 fps
	30	set maximum frame rate to 30 fps
flip	yes	flip image
	no	normal image
mirror	yes	mirror image

	no	normal image
improve	nothing	to improve audio quality in low bandwidth environment, this option must be reset whenever the URL is called, if it is to be enabled.
mphone	internal	set the audio source from built-in microphone.
	external	set the audio source from line-in microphone.

Camera Control URL

URL: /setup/ptcamera.cgi

NAME	VALUE	DESCRIPTION
addpos	<the position name>	add preset location with its name
delpos	<the position name>	delete preset location with its name
selloc	<index value, 0~19>	add preset location into patrol list
irenable	yes	enable the pan/tilt control using remote controller
	no	disable the pan/tilt control using remote controller
speedpan	-5~5	change the horizontal aim-range
speedtilt	-5~5	change the vertical aim-range
speedapp	1~5	change the speed of auto pan or auto patrol.

Image Quality Configuration URL

URL: /setup/image.cgi

NAME	VALUE	DESCRIPTION
brightness	<-5 ~ 5>	adjust brightness of image
contrast	<-5 ~ 5>	adjust contrast of image
hue	<-5 ~ 5>	adjust hue of image
saturation	<-5 ~ 5>	adjust saturation of image
preview	<not required>	not save the parameters
restore	<not required>	recall the original settings
save	<not required>	save the parameters

Application Configuration URL

URL: /setup/app.cgi

NAME	VALUE	DESCRIPTION
emode	<not required>	event mode application
smode	<not required>	sequential mode application
smethod	mail	upload snapshots by email
	ftp	upload snapshots by FTP
suffix	<not required>	FTP file with date and time suffix
delay	<integer>	seconds delay to detect next event
inter	<integer>	seconds delay to capture post-event
dihigh	< not required >	set DI high as trigger condition
dilow	< not required >	set DI low as trigger condition
dirise	< not required >	set DI rising as trigger condition
difall	< not required >	set DI falling as trigger condition
motion1	< not required >	set motion window1 as trigger condition
motion2	< not required >	set motion window2 as trigger condition
motion3	< not required >	set motion window3 as trigger condition
ioalarm	< not required >	trigger DO when DI condition matched
mdalarm	< not required >	trigger DO when motion detected

ioupload	< not required >	upload snapshot when DI condition matched
mdupload	< not required >	upload snapshot when motion detected
sinter	<integer>	seconds interval for sequential mode
sbegin	<hh:mm:ss>	time to start sequential mode
send	<hh:mm:ss>	time to stop sequential mode

Electromagnetic Compatibility (EMC)

USA - This equipment has been tested and found to comply with the limits for a Class B digital device, pursuant to Part 15 of the FCC Rules. These limits are designed to provide reasonable protection against harmful interference in a residential installation. This equipment generates, uses and can radiate radio frequency energy and, if not installed and used in accordance with the instructions, may cause harmful interference to radio communications. However, there is no guarantee that interference will not occur in a partial installation. If this equipment does cause harmful interference to radio or television reception, which can be determined by turning the equipment off and on, the user is encouraged to try to correct the interference by one or more of the following measures:

- Reorient or relocate the receiving antenna.
- Increase the separation between the equipment and receiver.
- Connect the equipment into an outlet on a circuit different from that to which the receiver is connected.
- Consult the dealer or an experienced radio/TV technician for help.

Shielded interface cables must be used in order to comply with emission limits.

Europe - This digital equipment full fills the requirement for radiated emission according to limit B of EN55022/1998, and the requirement for immunity according to EN50082-1/1992.

Liability

Intellisystem Technologies S.r.l. cannot be responsible for any technical or typographical errors and reserves the right to make changes to the products and manuals without prior notice. Intellisystem Technologies S.r.l. makes no warranty of any kind with regard to the material contained within this document, including, but not limited to, the implied warranties of merchantability and fitness for a particular purpose. All other company names and products are trademark or registered trademarks of their respective companies.

For any question and support please contact:

Intellisystem Technologies S.r.l.

Support: info@intellisystem.it

Web Site: <http://www.intellisystem.it>

Notes:

Technical Specifications

- System

CPU: Trimedia PNX1300

RAM: 16MB SDRAM

ROM: 2MB FLASH ROM

- Networking

Protocol

TCP/IP, HTTP, SMTP, FTP, Telnet, NTP, DNS and DHCP

Physical

10BaseT Ethernet or 100BaseT Fast Ethernet

WLAN

2.4GHz 802.11g DSSS CSMA/CA

22/11/5.5/2/1Mbps

Coverage: 100M/22Mbps, 150M/11Mbps, 250M/5.5Mbps, 300M/2Mbps, 350M/1Mbps

- Video Codec

Algorithm Supported

MPEG4(short header mode)

Features

Adjustable image size, quality and bit rate

Timestamp and text overlay

3 motion detection windows

Resolution

Up to 30/25 frames at 176x120 (NTSC) or 176x144 (PAL)

Up to 30/25 frames at 352x240 (NTSC) or 352x288 (PAL)

Up to 10 frames at 704x480 (NTSC) or 704x576 (PAL) (Only for the IT310 model)

- Camera Specification

1/4 inch color CCD sensor

704x480 or 704x576

1 Lux / F2.0

AGC, AWB

Electronic shutter: Up to 1/100,000 sec

- Lens

Board lens with 4.3mm focal length, F1.8

- Audio Codec

24Kbps, 8Kbps(optional)

- Microphone

Omni-directional
Frequency: 20 – 20,000Hz
S/N ratio: more than 58dB

- General I/O

1 sensor input(max. 12VDC 50mA)
1 relay output(max. 24VDC 1A, 125VAC 0.5A)

- LED Indicator

Dual color status indicator

- Dimension

200mm(D) * 318.5mm(W) * 330mm(H)

- Weight

NET. About 5Kg

- Power

Consumption: Near 25 W with Heater ON
Universal switching power-supply included
Adapter input: 100-240VAC, 50/60Hz, 1.1A
Adapter output: 12VDC, 3.5A

- Operating Environment

Temperature: 0-40°C/32-104°F
Humidity: 95%RH

- EMI & Safety

CE, FCC

- Viewing System Requirement

Operating System

Microsoft Windows 98SE/ME/2000/XP

Browser

Internet Explorer 5.x or above.

