



Network Camera IT50W

Quick Installation Guide

This guide describes the basic functions of IT50W Network Camera.

All detailed information is described in the user's manual.

**Warning Before Install**

- Power off the Network Camera as soon as it is found smoking or smelt unusual.



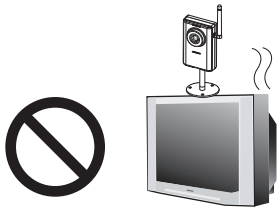
Contact your distributor when such cases happen.

- Keep the Network Camera away from the water. If the Network Camera is wet, power off immediately.

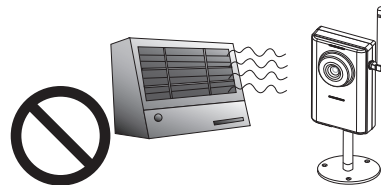


Contact your distributor when such cases happen.

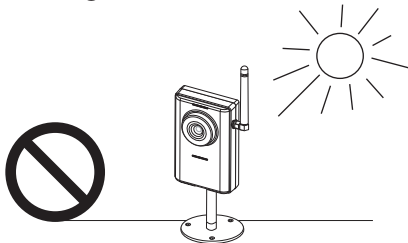
- Do not place the Network Camera around the heat sources, such as television or oven.



- Refer to your user's manual for the operating temperature.



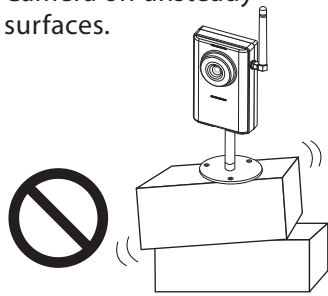
- Keep the Network Camera away from the direct sunlight.



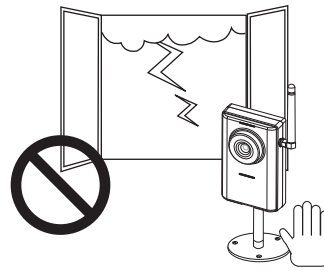
- Do not place the Network Camera in high humid environments.



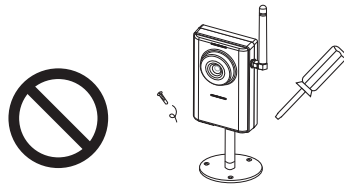
- Do not place the Network Camera on unsteady surfaces.



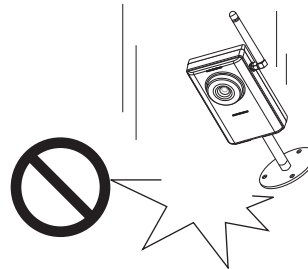
- Do not touch the Network Camera when it's lightning.



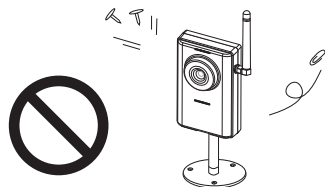
- Do not disassemble the Network Camera.



- Do not drop the Network Camera.



- Do not insert any object into the Network Camera, such as needles.

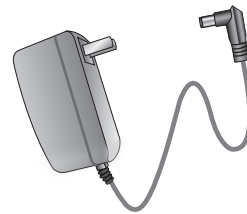


1 Check package contents

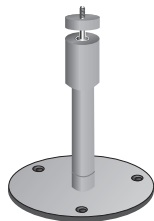
● IT50W



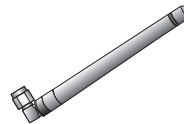
● Power adapter



● Camera stand



● Antenna

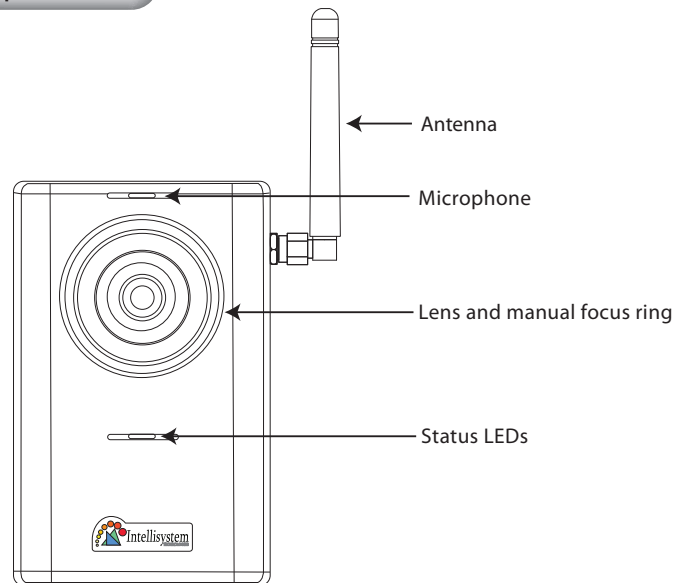


● Software CD

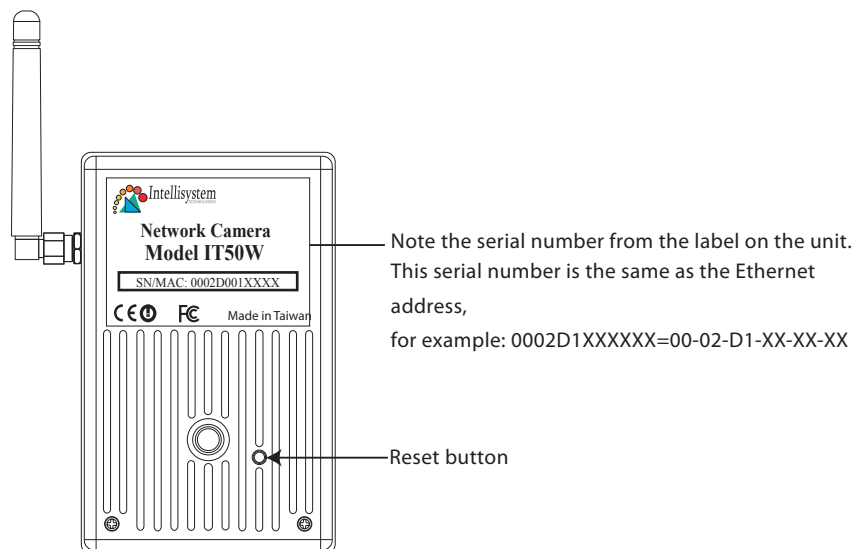


2 Physical description

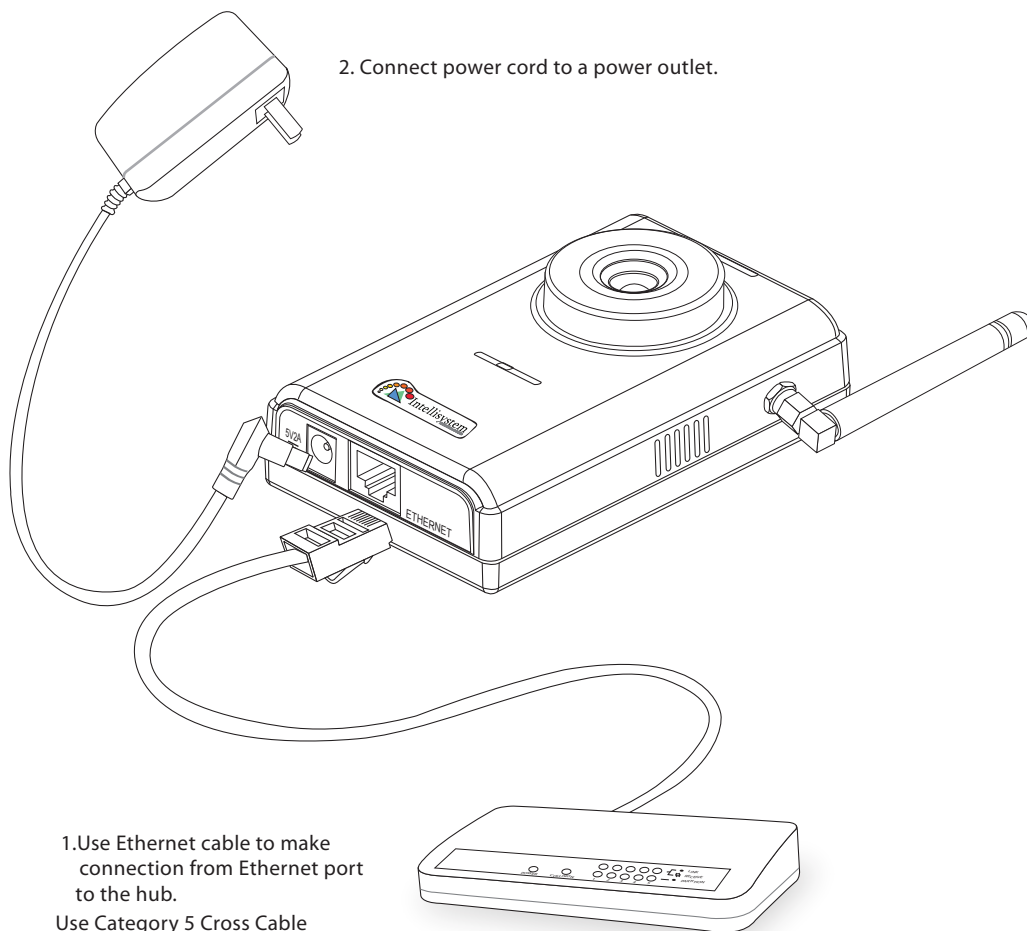
● Front panel



● Rear panel



3 Install your Network Camera in Ethernet network



2. Connect power cord to a power outlet.

1. Use Ethernet cable to make connection from Ethernet port to the hub.
Use Category 5 Cross Cable when the Network Camera is directly connected to PC.

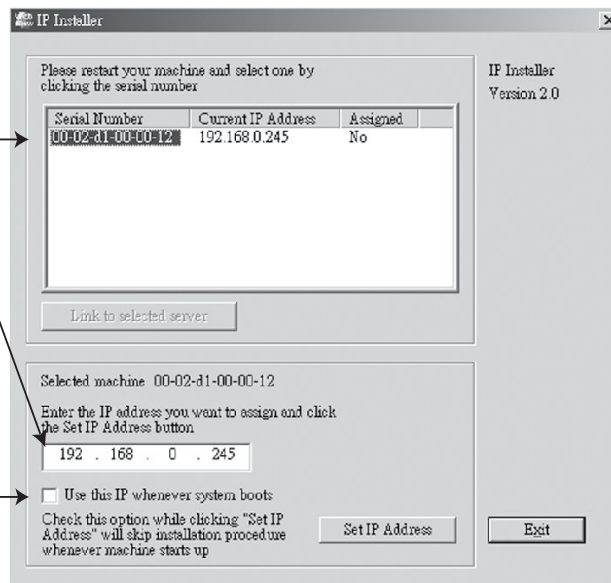
4 Assign IP address

1.Run the IP Installer under the Software Utility directory from software CD.

2.Click on serial number that matches the one you just note.

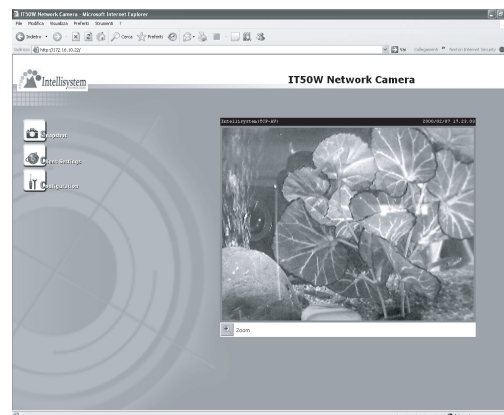
3.Assign a free IP address.

4.If you want to fix the IP address of the unit, check the option "Use this IP whenever system boots".



5 The Internet Explorer Connects to the Network Camera

At the initial access to the "Connection Type" page, the web browser will ask for a new plug-in installation, the plug in being Network Camera. This plug-in has been registered for certification and can be used to change the parameters at the client's site. The user may click on to install the plug-in. If the web browser does not allow the user to complete the installation, check the Internet security in order to set on your web browser to "Ask confirmation for download ActiveX control without electronic Signature" and so refresh the current web page. If the problem persist please contact your IT or networking supervisor.



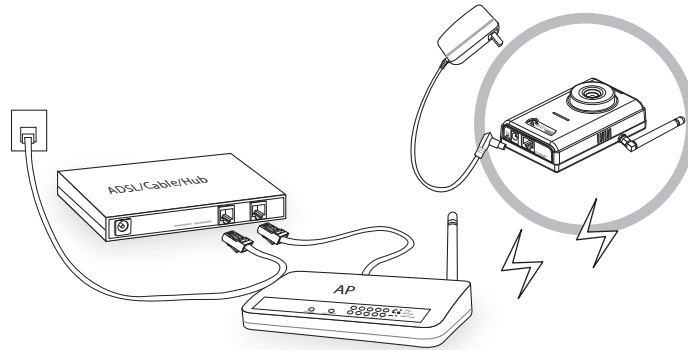
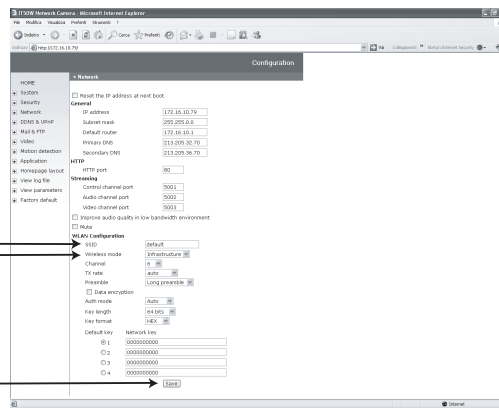
6 Set up your wireless configuration for the Network Camera

1. Check the SSID currently set on your wireless access point (AP).
2. Go to IT50W's Configuration > Network > WLAN Configuration

3. Type in the SSID consistent with the setting on your AP.

4. Select the Wireless mode as "Infrastructure".

5. Click Save



Note:

1. SSID abbreviated from Service Set Identifier is the name assigned to the wireless network. The IT50W's factory SSID setting is set to "default".
2. Select "Ad-Hoc" wireless mode if you want the IT50W to communicate without using an AP or wireless router.

For setup further configuration, please check user's manual on the software CD.

Intellisystem Technologies - <http://www.intellisystem.it>