



Intellisystem
TECHNOLOGIES

Network Camera

IT3G50-IT3G50W



IT3G320W



IT3G320



USER'S MANUAL

<http://www.intellisystem.it>

Before You Use This Product

The use of surveillance devices may be prohibited by law in your country. The IT3G320-IT3G320W Network Camera is not only a high-performance web-ready camera but also can be part of a flexible surveillance system. It is the user's responsibility to ensure that the operation of such devices is legal before installing this unit for its intended use.

It is important to first verify that all contents received are complete according to the list in the "Package Contents" chapter. Take notice of the warnings in "Quick installation guide" before the IT3G320-IT3G320W Network Camera is installed, then carefully read and follow the instructions in the "Installation" chapter to avoid damages due to faulty assembly and installation. This also ensures the product is used properly as intended.

The IT3G320-IT3G320W Network Camera is a network device and its use should be straightforward for those who have basic network knowledge. The "Troubleshooting" chapter in the Appendix provides remedies to the most common errors in set up and configuration. You should consult this chapter first if you run into a system error.

The IT3G320-IT3G320W Network Camera is designed for various applications including video sharing, general security/surveillance, etc. The "How to Use" chapter suggests ways to best utilize the IT3G320-IT3G320W Network Camera and ensure proper operations. For the creative and professional developers, the "URL Commands of The IT3G320-IT3G320W Network Camera" chapter serves to be a helpful reference to customize existing homepages or integrating with the current web server.


For paragraphs preceded by  the reader should use caution to understand completely the warnings. Ignoring the warnings may result in serious hazards or injuries.

Table of Contents

Before You Use This Product.....	1
Package Contents	4
Installation	4
Hardware installation	6
Software Installation	9
Initial Access to the IT3G320-IT3G320W Network Camera	12
Check Network Settings	12
Add Password to Prevent Unauthorized Access	12
How to Use.....	13
Authentication.....	13
Installing plug-in.....	14
Primary user's capability	15
Main Screen with Camera View.....	15
Client settings	18
Administrator's capability	22
Fine-tuning for Best Performance.....	22
Opening accounts for new users	24
Build a security application	25
Software revision upgrade	26
Definitions in Configuration	27
System parameters	28
Security settings	29
Network settings.....	30
Network type	30
HTTP.....	32
RTSP Streaming	32
WLAN Configuration (For Wireless Model Only).....	33
DDNS	36
Access List	37
Audio and Video.....	38
Video Settings.....	38

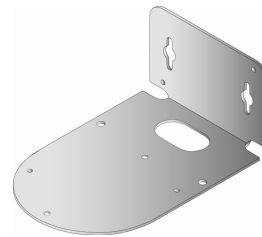
Video orientation	38
Audio settings	39
Image Settings.....	40
Camera Control.....	41
Email & FTP	43
Email	43
FTP	43
Motion detection	45
Application settings	47
Snapshot.....	47
Weekly schedule.....	47
Snapshot file name prefix	47
Send out the snapshot while motion detection.....	47
Sequential operation	48
Method for sending snapshot	48
System log	50
Viewing system parameters.....	51
Maintenance	52
Appendix	53
A. Troubleshooting	53
Status LED.....	53
Reset and restore	54
B. URL commands of the IT3G320-IT3G320W Network Camera	54
Get server parameter values	54
Set server parameter values	56
Available parameters on the server	58
Camera Control	71
Recall.....	72
Application page CGI command	73
Capture single snapshot	75
Account management	75
System logs	77
Configuration file	78
Upgrade firmware	78
D. Technical specifications	79

Package Contents

IT3G320-IT3G320W Network
Camera (Wired or Wireless)



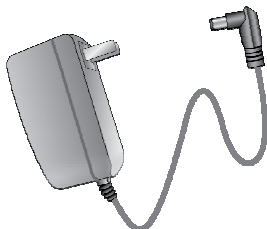
Mounting Kit & Pads



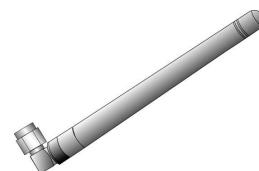
Software CD



Power adapter



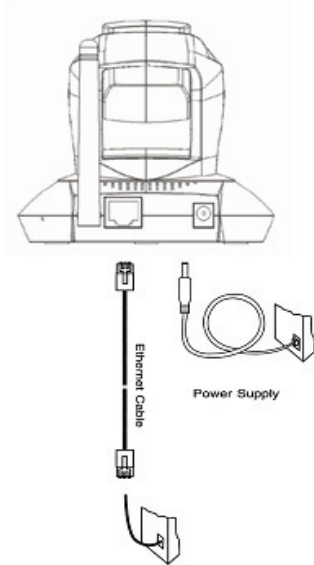
Antenna (For Wireless Model
Only)



Installation

In this manual, "User" refers to whoever has access to the IT3G320-IT3G320W Network Camera , and "Administrator" refers to the person who can configure the IT3G320-IT3G320W Network Camera and grant user access to the camera.

Hardware installation



Please verify that your product package contains all the accessories listed in the foregoing Package Contents. Depending on the user's application, an Ethernet cable may be needed. The Ethernet cable should meet the specs of UTP Category 5 and not exceed 100 meters in length.



Connect the power adapter jack to the Network Camera before plugging in to the power socket. This will reduce the risk of accidental electric shock.

Upon powering up, the front red LED will become lighted first and then the device will go through booting process. During the booting process, red, blue and green LEDs will be on. After booted, the IT3G320-IT3G320W Network Camera will standby for getting IP address. After getting IP Address, the green LED will blink every second.

The IT3G320/IT3G320W IT3G320-IT3G320W Network Camera will first detect Ethernet. If it does not connect to Ethernet, the IT3G320-IT3G320W Network Camera will try WLAN. During the searching and connecting process to the wireless access point or station, the red LED of the IT3G320-IT3G320W Network Camera will flash every second. Until the IT3G320-IT3G320W Network Camera connects to the other wireless device, the red LED will become lighted. Operating

in either network mode, the green LED will flash every second as heartbeat to indicate alive. If the red LED is blinking, please check the network connections.

To install in Ethernet

Make sure the Ethernet is firmly connected to a switch hub. After attaching the Ethernet cable plug in the power adapter. If the LED turns out to be steady blue, go to next paragraph "Software installation". If the Ethernet is not available, IT3G320-IT3G320W Network Camera will switch to wireless LAN mode.

To install in wireless LAN (IT3G320W Model Only)

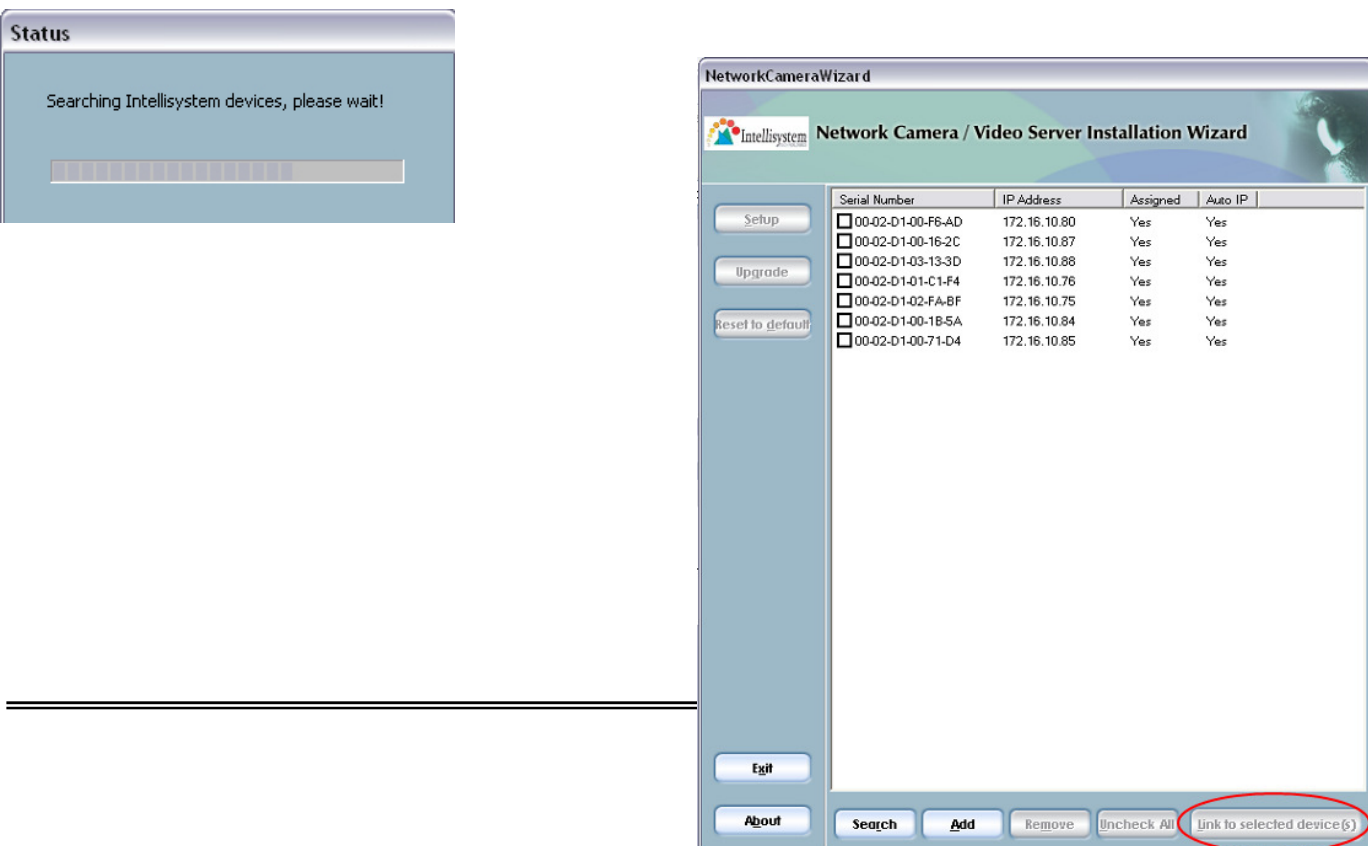
If the Ethernet is not available while power on, the IT3G320W Network Camera will search for any access point with the SSID "default". Once any access point is found, the LED will turn blue to wait for installation. If the network environment cannot meet the default settings, install the IT3G320W Network Camera in Ethernet to proceed with wireless LAN configuration.

Software Installation

In this manual, "User" refers to whoever has access to the IT3G320-IT3G320W Network Camera , and "Administrator" refers to the person who can configure the IT3G320-IT3G320W Network Camera and grant user access to the camera.

At the end of the hardware installation, the Administrator must place the product software CD into the CD-ROM drive of the PC running in MS Windows. An auto-run program will pop up (If the program is not on auto-run, go to the root directory of the software CD and click on "autorun.exe").

Click on "IT3G320-IT3G320W Network Camera Wizard" to run installation program.



Upon Wizard's start up, a searching box will pop up. This program searches for

IT3G320-IT3G320W Network Camera s or Video Servers on the same LAN:

After searching, Video Servers or IT3G320-IT3G320W Network Camera s will be located by the Installation Wizard. There may be several entries shown in the window. The Administrator may differentiate the IT3G320-IT3G320W Network Camera s with the serial number.

For the series number in the "Serial Number" field, please check the label on the bottom of the camera

The IP addresses shown in the "Current IP Address" field reflect those on the local network. They may be from the DHCP server. If there is no DHCP server, the camera will try to find a free IP address (this takes from 15 second to 3 minutes, depending on the LAN status). The method of finding IP address is seeking from 192.168.0.99, to 192.168.0.254. If any of the address inside this range is free, the IT3G320-IT3G320W Network



Camera will be assigned to this IP address, and its subnet mask would be 255.255.255.0. If none of the addresses is free, the IT3G320-IT3G320W Network Camera will try the range from 192.168.0.2 to 192.168.0.98. After an IP address is assigned to the camera, the "Activity" status LED blinks.

The UPnP function will always assign an IP address for the IT3G320-IT3G320W Network Camera . The Administrator can click on button "Link to selected device" to connect the I.E. to the camera.

If the camera is not on the IP installer list, click on the "Search" button to search for

the camera on the LAN.

There may be many IT3G320-IT3G320W Network Camera are in the local network. Users can differentiate the IT3G320-IT3G320W Network Camera s with the serial number. The serial number is printed on the labels on the carton and the back of the IT3G320-IT3G320W Network Camera body.

Initial Access to the IT3G320-IT3G320W

Network Camera

Check Network Settings

The IT3G320-IT3G320W Network Camera can be connected either before or immediately after software installation onto the Local Area Network. The Administrator should complete the network settings on the configuration page, including the correct subnet mask and IP address of gateway and DNS. Ask your network administrator or Internet service provider for the detail information. By default the IT3G320-IT3G320W Network Camera requires the Administrator to run installation every time it reboots. If the network settings are to remain unchanged, disable the Install option. Refer to "Network settings" on the System Configuration page for details. If any setting is entered incorrectly and cannot proceed to setting up the IT3G320-IT3G320W Network Camera, restore the factory settings following the steps in the "Troubleshooting" chapter of the Appendix.

Add Password to Prevent Unauthorized Access

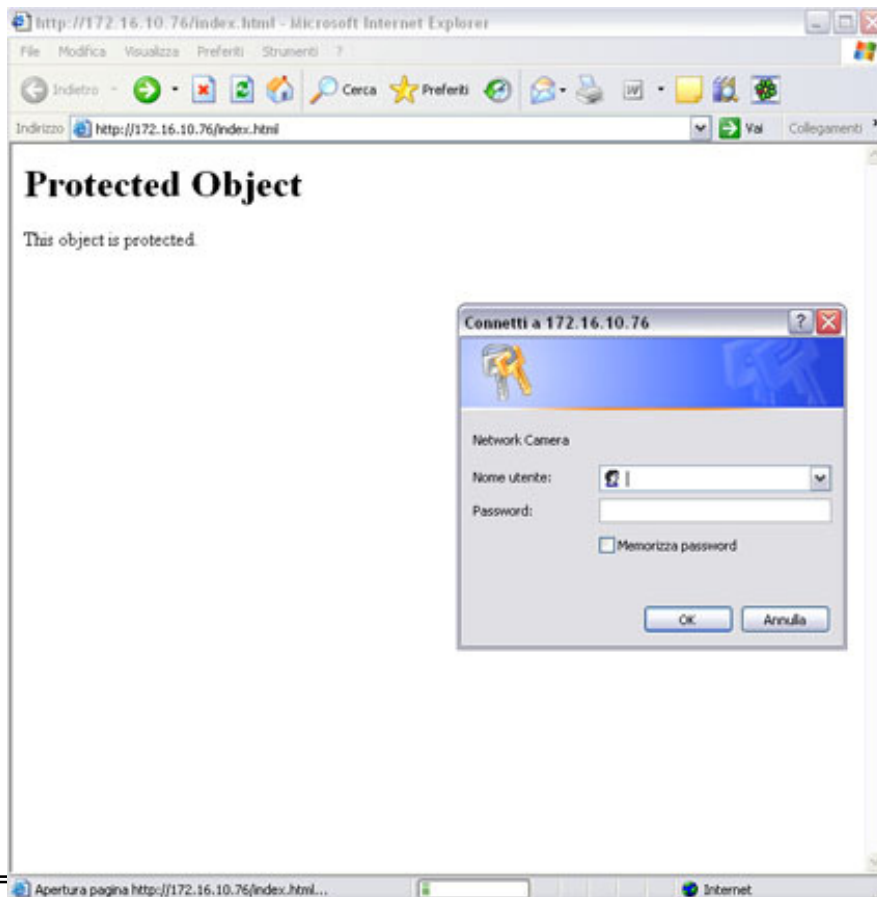
The default Administrator's password is blank and the IT3G320-IT3G320W Network Camera initially will not ask for any password. The Administrator should immediately implement a new password as a matter of prudent security practice. Once the Administrator's password is saved, the IT3G320-IT3G320W Network Camera will ask for the user's name and password before each access. The Administrator can set up a maximum of twenty (20) user accounts. Each user can access the IT3G320-IT3G320W Network Camera except to perform system configuration. Some critical functions are exclusive for the Administrator, such as system configuration, user administration, and software upgrades. The user name for the Administrator is permanently assigned as "root". Once the password is changed, the browser will display an authentication window to ask for the new

password. **Once the password is set, there is no provision to recover the Administrator's password. The only option is to restore to the original factory default settings.**

How to Use

Authentication

After opening the Web browser and typing in the URL of the IT3G320-IT3G320W Network Camera , a dialogue window pops up to request a username and password. Upon successful authentication, the following figure is displayed.



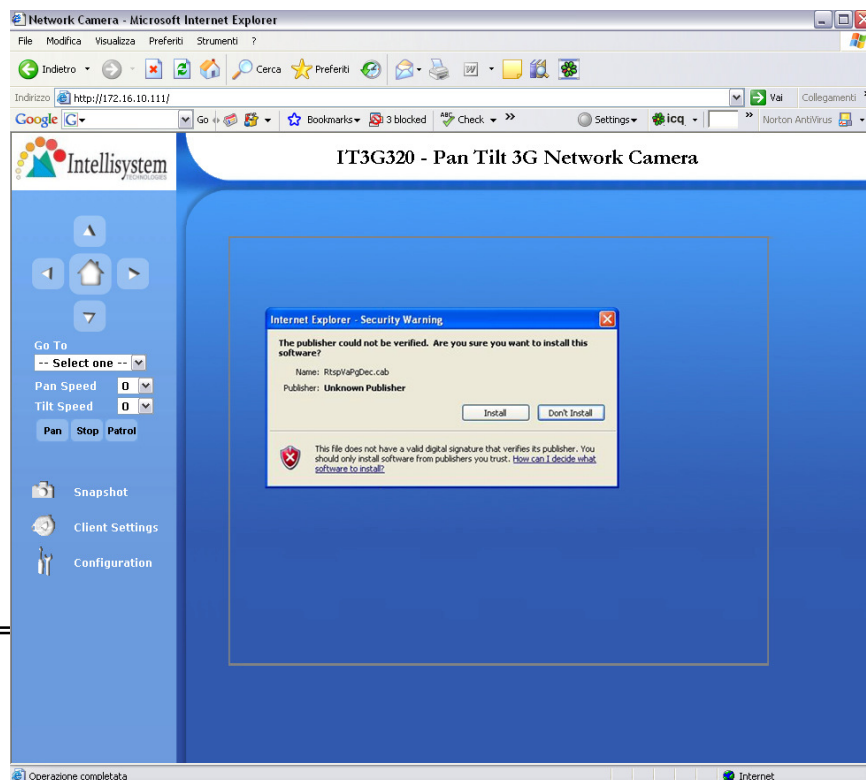
The foreground is the login window and the background shows the message if authentication fails. The user may check the option box to save the password for future convenience. This option is not available to the Administrator for obvious

reason.

*If the administrator (root user) assigns no password, everybody can access the homepage directly.

Installing plug-in

For the initial access to the IT3G320-IT3G320W Network Camera in Windows, the web browser may prompt for permission to install a new plug-in for the IT3G320-IT3G320W Network Camera. Permission request depends on the Internet security settings of the user's PC or notebook. If the highest security level is set, the computer may prohibit any installation and execution attempt. This plug-in has been registered for certificate and is used to display the video in the browser. Users may click on to proceed. If the web browser does not allow the user to continue to install, check the Internet security option and lower the security levels or contact your IT or networking supervisor for help.



Primary user's capability

Main Screen with Camera View

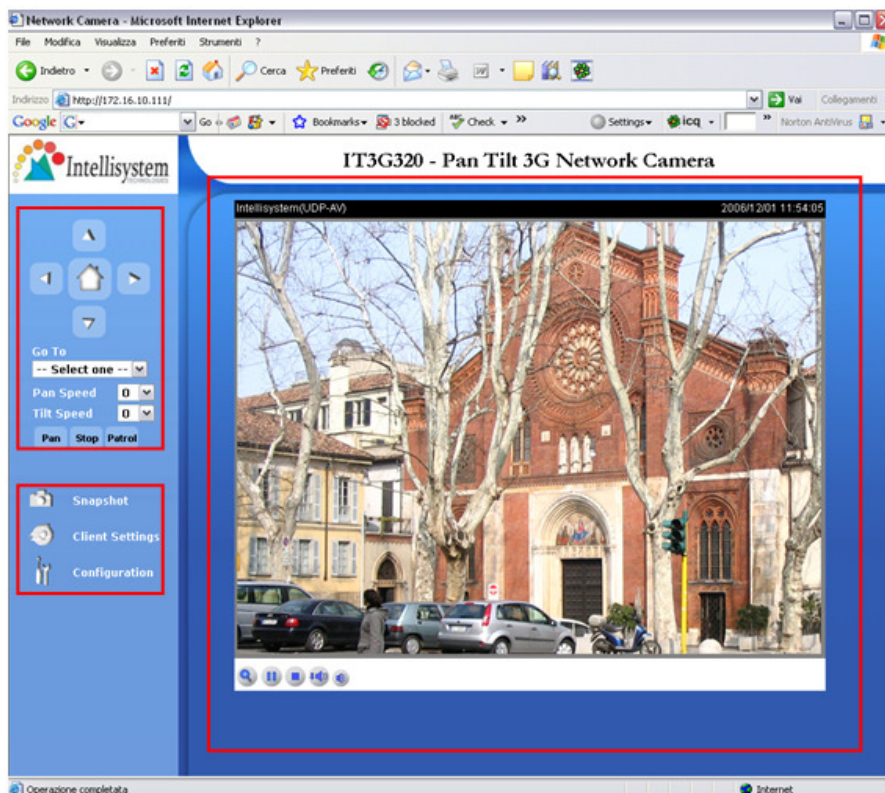
The main page layout has three parts:

Configuration functions: The camera can be configured using these user interfaces.

Camera View: What the camera sees.

Pan/Tilt control buttons: These buttons provide a command interface to control the aim of the camera.

Click on the configuration link to the left of the image window to enter the configuration page.



The Configuration:

“Snapshot” The button provides users a fast way to capture a single image of the

video from the IT3G320-IT3G320W Network Camera .

"Client Settings"

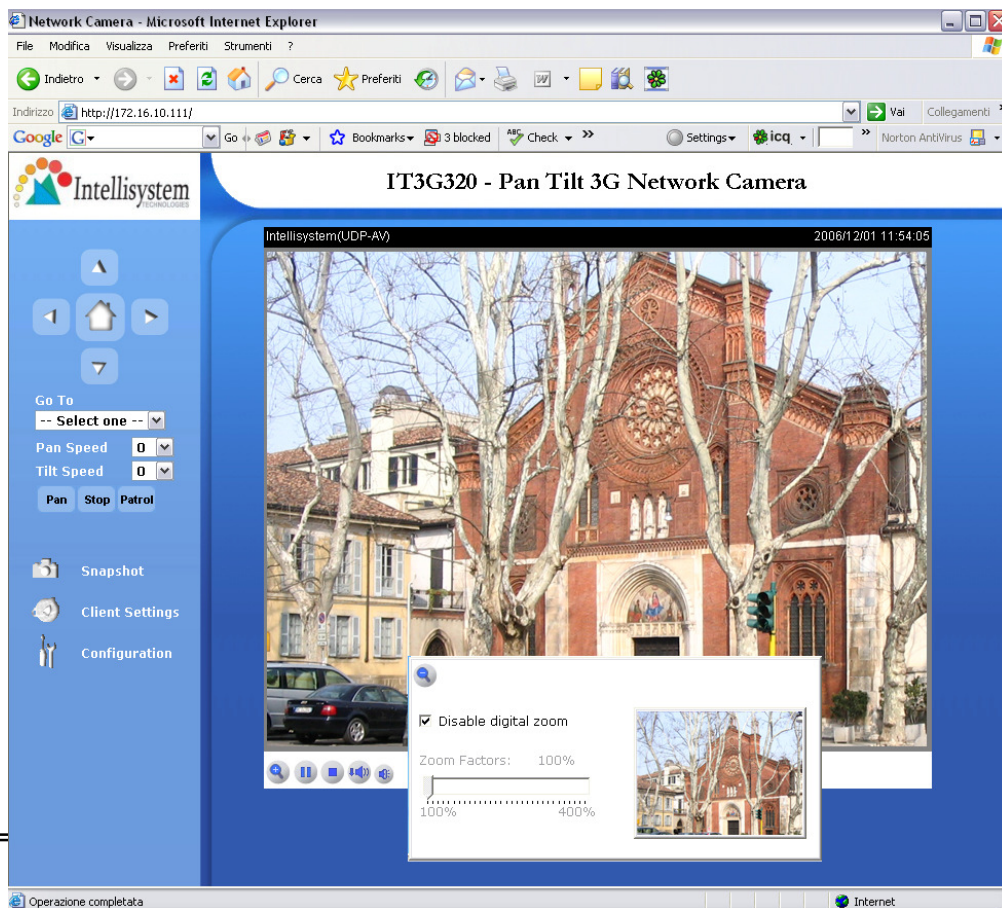
Clicking on this button links you to the client setting pages, please check the following session for more details.

"Configuration" Only the Administrator can access camera configurations.

The camera view:

The information bar at the top of the camera view shows the connection type to the IT3G320-IT3G320W Network Camera and the current date/time.

The camera view provides not only the live video, but also a way to aim the Network Camera to different target. Using mouse to click on the target inside the video will command the IT3G320-IT3G320W Network Camera to aim at the target.



View capabilities

This feature allows users to open a digital zoom control window to specify the zoom factor for specified area in the camera view. Users can also move the white frame to select the area of the video that she/he wants to view.

“Disable digital zoom” The checkbox selection allows users to disable/enable the digital zoom function.

“Zoom Factors” The range of zoom factor is from 100% to 400%, users can select any integer factor inside this area.

“Hide” Click on this button can close the digital zoom control window.



“Play” The option will connect to the IT3G320-IT3G320W Network Camera . The button is

the same one as **"Pause"**.

"Pause" The option will pause the video, but the connection remains. The button is the same one as **"Play"**.

"Stop" The option will disconnect to the IT3G320-IT3G320W Network Camera .

"Play volume" Click on this button can adjust the audio volume.

"Mute" Disable audio at client side.

The pan/tilt control buttons:

The direction buttons are for Left, Right, Up, Down, and Home functions. The Home button centers the camera.

"Go to" Once the Administrator has determined the preset positions; the User can aim the camera using this control.

"Pan speed"

This button sets the moving range of the "Left" and "Right" commands.

"Tilt speed"

This button sets the moving range of the "Up" and "Down" commands.

"Pan"

This button commands the camera to pan from the current position to the left-most and then to the right-most position. After panning, the camera returns to the original position.

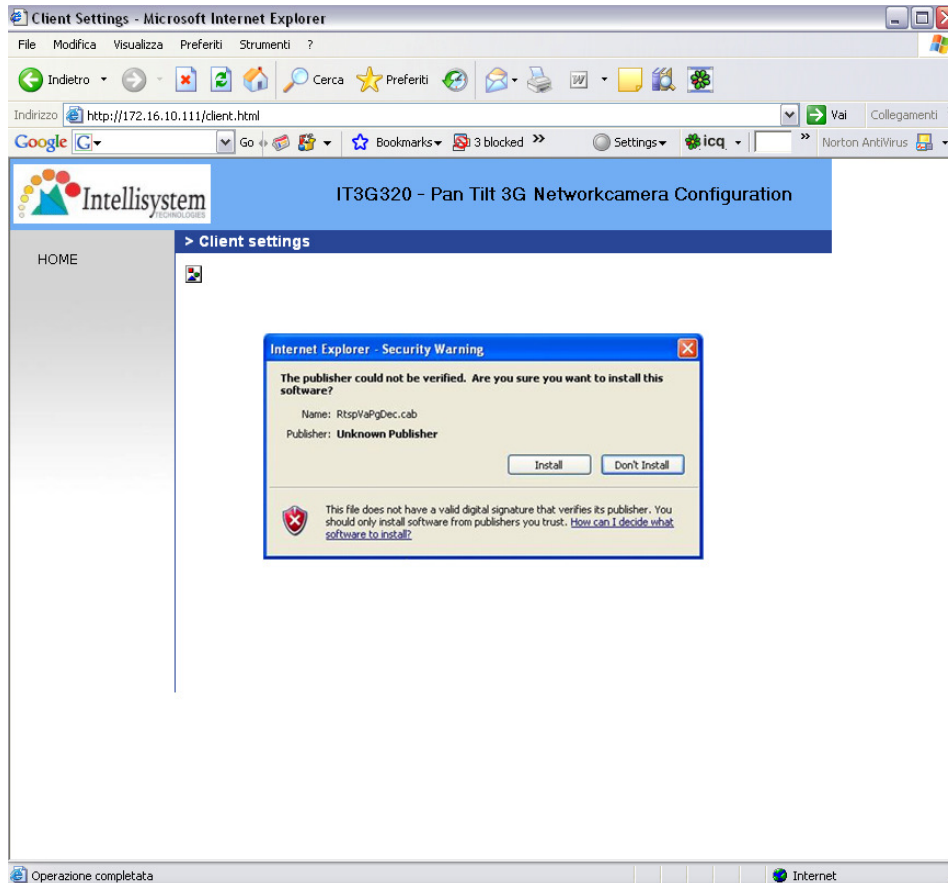
"Patrol"

This button commands the camera to patrol between the preset positions on the Patrol List, which can be modified on the "Camera control page". After one patrol cycle, the camera returns to the original position.

"Stop" This stops the "Auto Pan" command or "Auto Patrol" command.

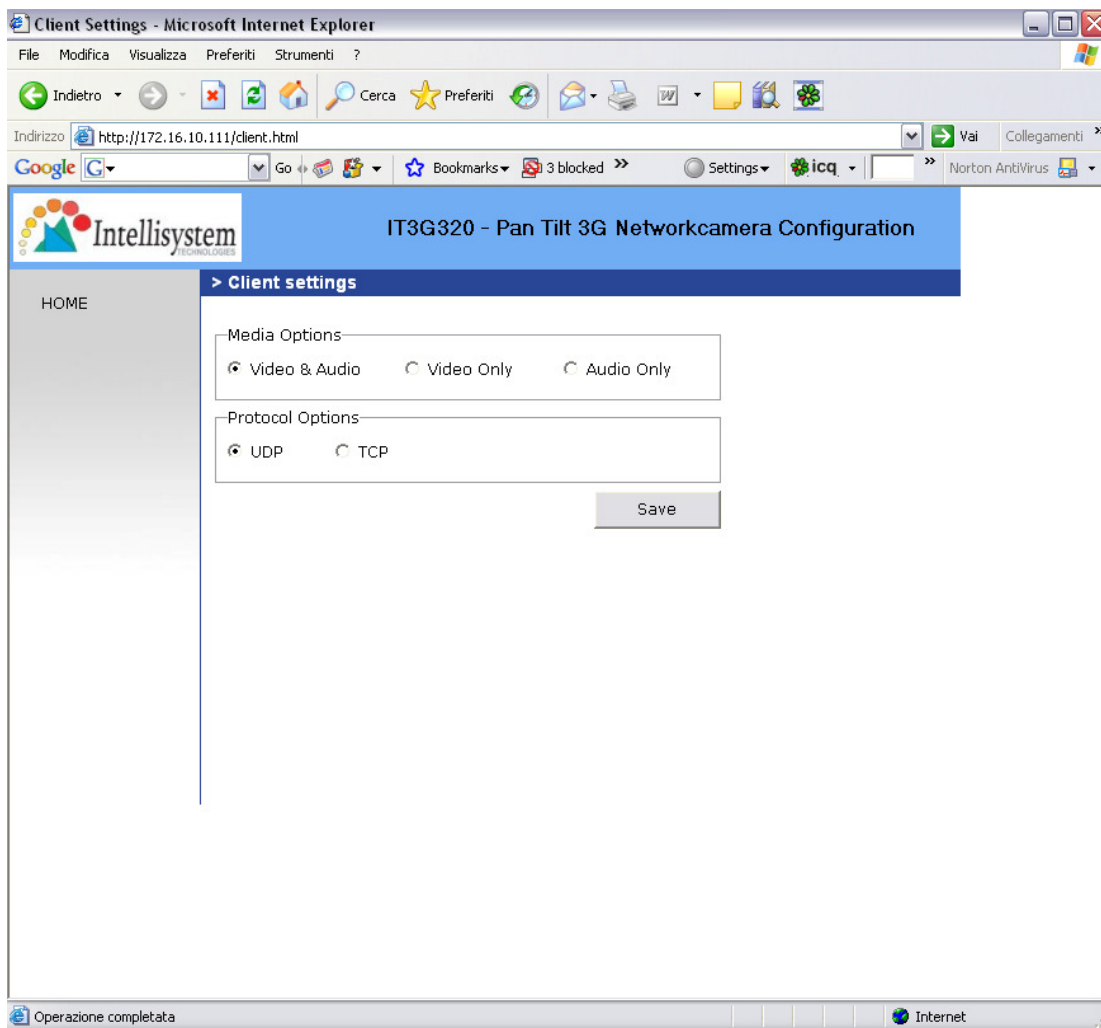
Client settings

At the initial access to the "Connection type" page in Windows, the web browser will ask for a new plug-in installation, the plug-in being the



IT3G320-IT3G320W Network Camera . This plug-in has been registered for certification and can be used to change the parameters at the client's site. The user may click on to install the plug-in. If the web browser does not allow the user to complete the installation, check the Internet security to lower the security level or contact your IT or networking supervisor.

There are two settings for the client side. One is "**Media Options**" for users to determine the type of media to be streaming. The other is "**Protocol Options**" which allows choices on connection protocol between client and server. There are two protocols choices to optimize your usage – UDP and TCP.



The **UDP** protocol allows for more real-time audio and video streams. However, some packets may be lost due to network burst traffic and images may be obscured. The **TCP** protocol allows for less packet loss and produces a more accurate video display. The downside with this protocol is that the real-time effect is worse than that with the UDP protocol.

If no special need is required, UDP protocol is recommended. Generally speaking, the client's choice will be in the order of UDP → TCP. After the IT3G320-IT3G320W Network Camera is connected successfully, "Protocol Option" will indicate the selected protocol. The selected protocol will be recorded in the user's PC and will be used for the next connection.

If the network environment is changed, or the user wants to let the web browser to

detect again, manually select the UDP protocol, save, and return HOME to re-connect.

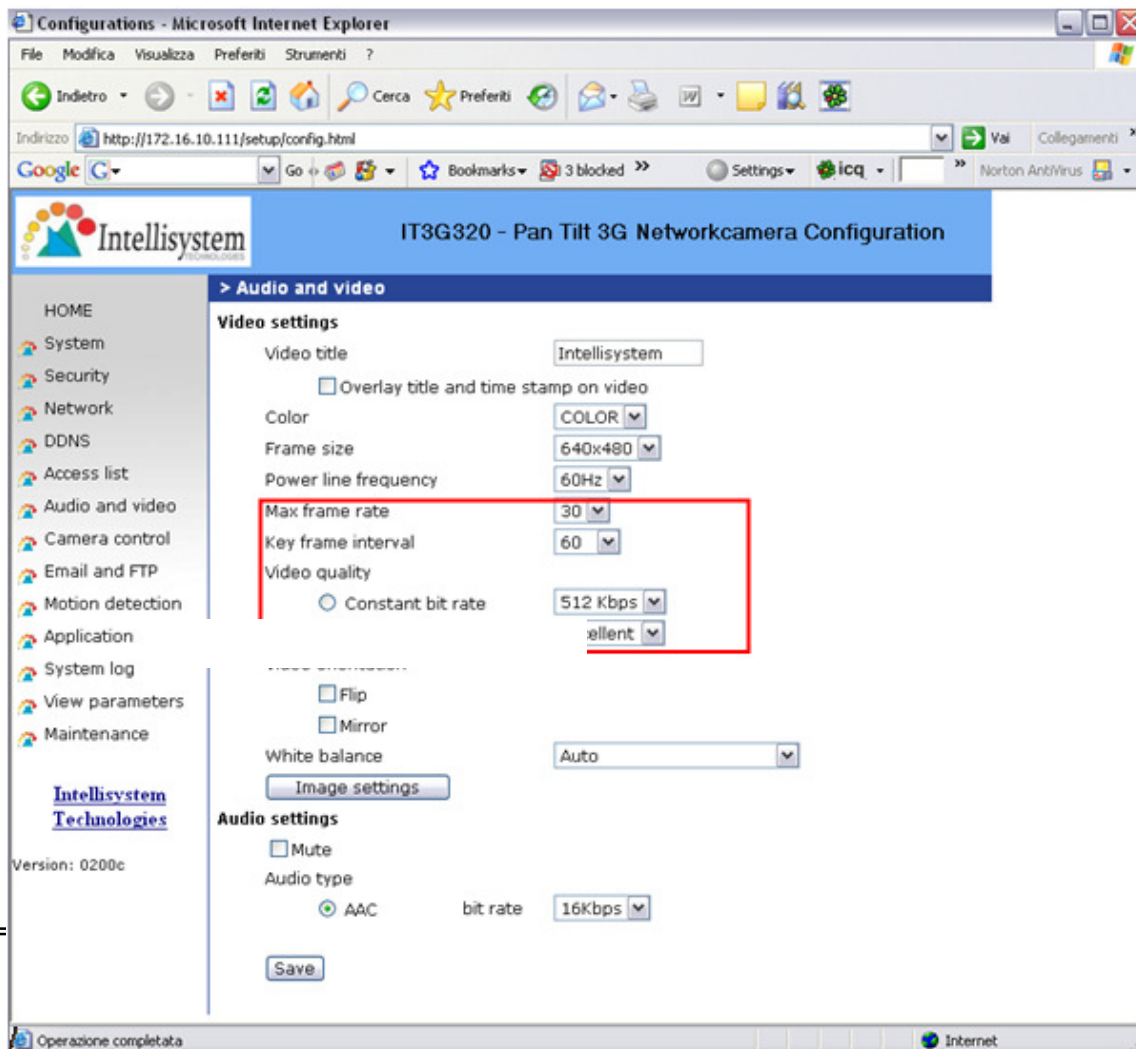
<url> *http://<IT3G320-IT3G320W Network Camera >/client.html*

<IT3G320-IT3G320W Network Camera > is the domain name or the original IP address of the IT3G320-IT3G320W IT3G320-IT3G320W Network Camera .

Administrator's capability

Fine-tuning for Best Performance

Best performance generally equates to the fastest image refresh rate with the best video quality, and at the lowest network bandwidth as possible. The three factors, "Maximum frame rate", "Constant bit rate", and "Fix quality" on the Audio and Video Configuration page, are correlative to allow for achieving the best performance possible.



For Best Real-time Video Images

To achieve good real-time visual effect, the network bandwidth should be large enough to allow a transmission rate of greater than 20 image frames per second. If the broadband network is over 1 Mbps, set the "Fix bit rate" to 1000Kbps or 1200Kbps. The maximum frame rate is 30. If your network bandwidth is more than 512Kbps, you can fix the bit rate according to your bandwidth and set the maximum frame rate to 30 fps. If the images vary dramatically in your environment, you may want to slow the maximum frame rate down to 20 fps in order to lower the rate of data transmission. This allows for better video quality and the human eyes cannot readily detect the differences between those of 20, 25, or 30 frames per second. If your network bandwidth is below 512 Kbps, set the "Fix bit rate" according to your bandwidth and try to get the best performance by fine-tuning with the "Maximum frame rate". In a slow network, greater frame rate results in blur images. Another work-around is to choose "160x120" in the "Size" option for better images. Video quality performance will vary somewhat due to the number of users viewing on the network; even when the parameters have initially been finely tuned. Performance will also suffer due to poor connectivity because of the network's burst constraint.

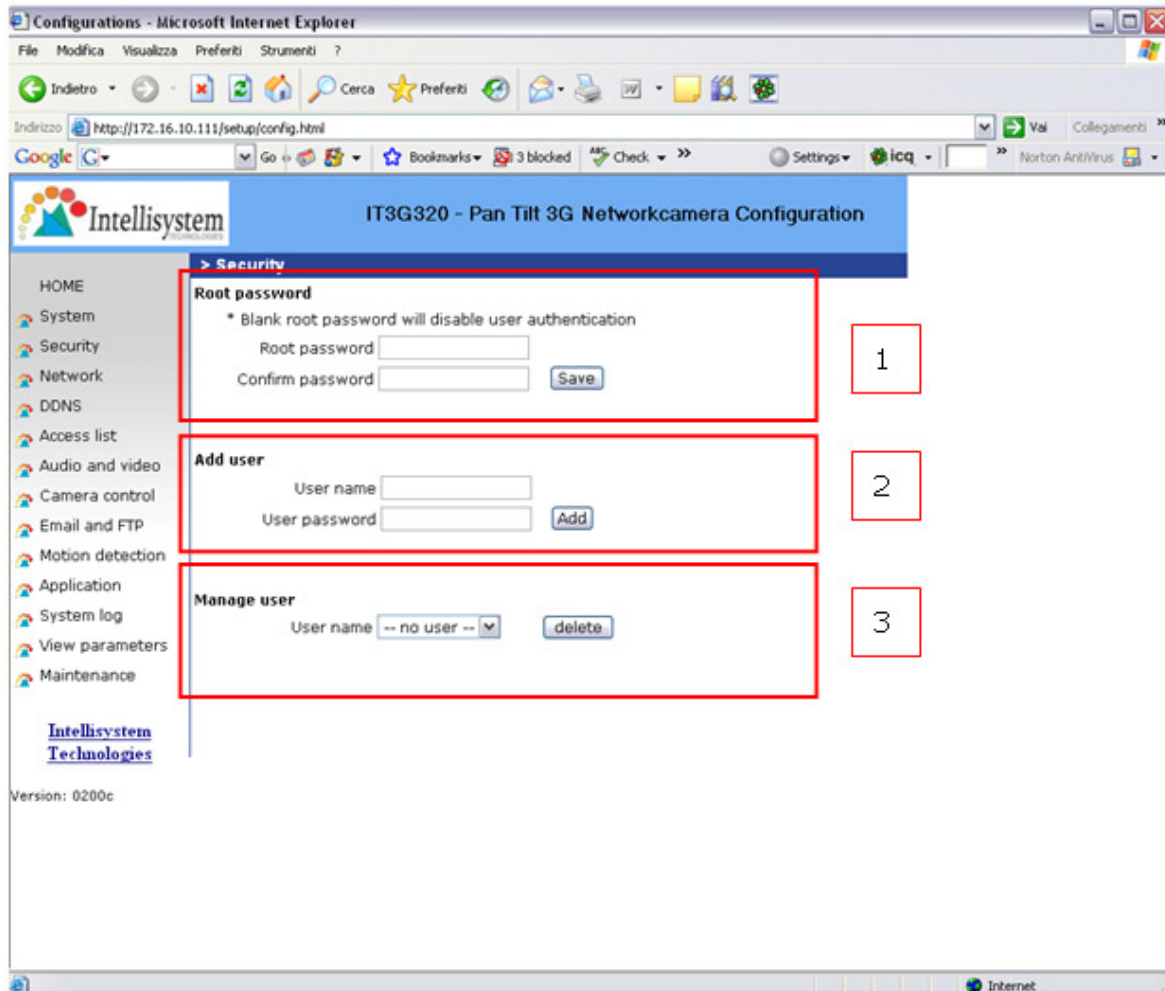
Only Quality Images Will Do

To have the best video quality, you should set "Fix quality" at "Detailed" or "Excellent" and adjust the "Maximum frame rate" to match your network's bandwidth. If your network is slow and you receive "broken" pictures, go to the TCP protocol in "Connection type" and choose a more appropriate mode of transmission. The images may suffer a time delay due to a slower connection. The delay will also increase with added number of users.

Somewhere Between Real-time and Clear Images

If you have a broadband network, set "Fix quality" at "Normal" or better, rather than setting "Fix bit rate". You can also fix the bandwidth according to your actual network speed and adjust the frame rate. Start from 30 fps down for best results but not below 15 fps. If the image qualities are not improved, select a lower bandwidth setting.

Opening accounts for new users



Protect IT3G320-IT3G320W Network Camera by passwords

The IT3G320-IT3G320W Network Camera is shipped without any password by default. That means everyone can access the IT3G320-IT3G320W Network Camera including the configuration as long as the IP address is known. It is necessary to assign a password if the IT3G320-IT3G320W Network Camera is intended to be

accessed by others. Type a new word twice in ① to enable protection. This password is used to identify the administrator. Then add an account with user name

and password for your friends in ②. IT3G320-IT3G320W Network Camera can provide twenty accounts for your valuable customers or friends. You may delete some users from ③.

Build a security application

The Administrator can use the built-in motion detection to monitor any movement to perform many useful security applications. To upload the snapshots, users can choose either email or FTP according to user's needs. Both e-mail and FTP use the network settings on the Email and FTP page. Refer to the definition section for detail configuration.

1. Click on "**Configuration**" on homepage;
2. Click on "**Motion detection**" at the left column;
3. Check "Enable motion detection";
4. Click on new to have a new window to monitor video;
5. Type in a name to identify the new window;
6. Use the mouse to click, hold, and drag the window corner to resize or the title bar to move;
7. Fine-tune using the "Sensitivity" and "Percentage" fields to best suit the camera's environment. Higher "Sensitivity" detects the slighter motion. Higher "Percentage" discriminates smaller objects;
8. Clicking on "Save" enables the activity display. Green means the motion in the window is under the watermark set by Administrator and red means it is over the watermark;
9. Click on "**Application**" at the left column;
10. Check the weekdays as you need and give the time interval to monitor the motion detection every day;
11. Select the Trigger on Motion detection;
12. Set the **delay before detecting next motion** to avoid continuous false alarms

following the original event;

13. Set the number of pre-event and post-event images to be uploaded;
14. Check the window name set in step 5;
15. Check the way to upload snapshot;
16. Click on save to validate.

Software revision upgrade

An easy-to-use Upgrade Wizard is provided to upgrade the IT3G320-IT3G320W Network Camera with just a few clicks. The upgrade function is opened to the Administrator only. To upgrade the system, follow the procedures below.

1. Download the firmware file named "xxx.pkg" from the appropriate product folder.
2. Run the Upgrade Wizard and proceed following the prompts. Refer to the instructions of the Upgrade Wizard for details.

restart the

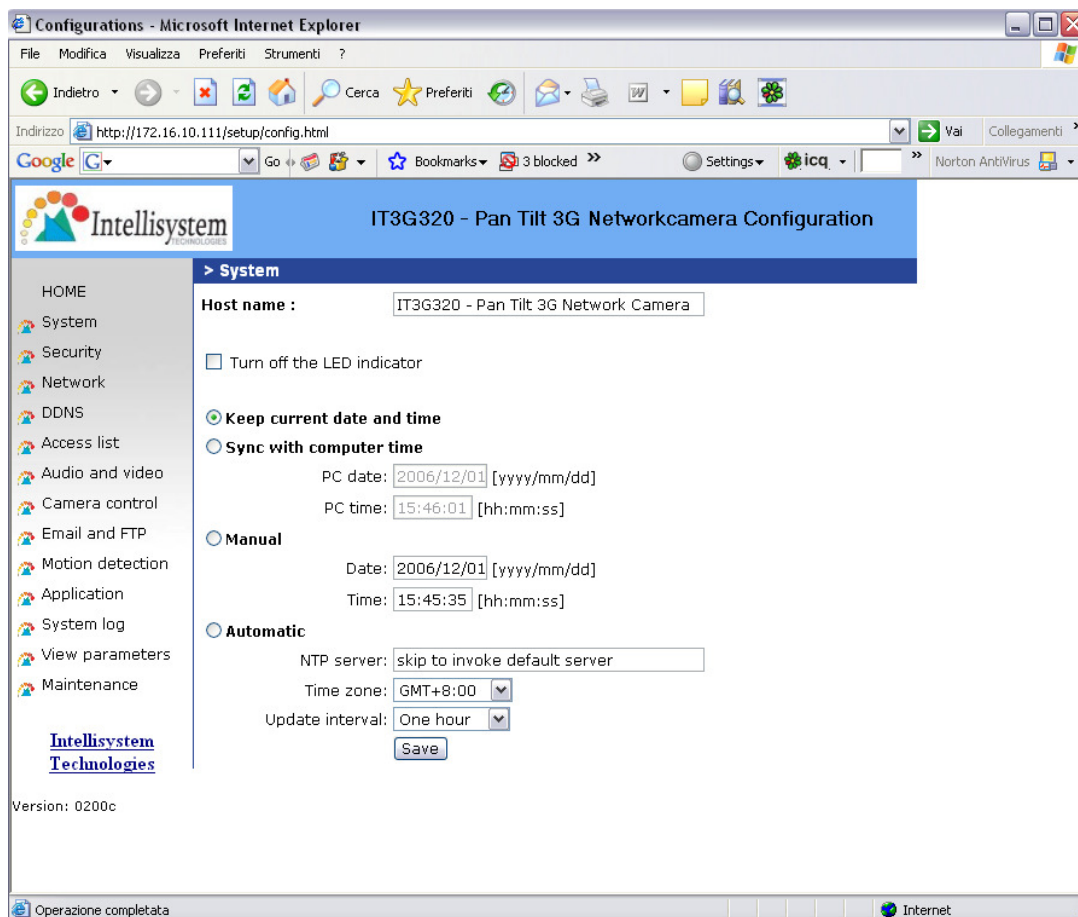


If power fails during the writing process of Flash memory, the program in the memory of the IT3G320-IT3G320W Network Camera may be destroyed permanently. If the Network Camera cannot restart properly, ask your dealer for technical service.

Definitions in Configuration

Only the Administrator can access system configuration. Each category in the left column will be explained in the following pages. The bold texts are the specific phrases on the Option pages. The Administrator may type the URL below the figure to directly enter the frame page of configuration. If the Administrator also wants to set certain options through the URL, read the reference appendix for details.

<url> <http://<IT3G320-IT3G320W Network Camera >/setup/system.html>
<IT3G320-IT3G320W Network Camera > is the domain name or original IP address of the IT3G320-IT3G320W IT3G320-IT3G320W Network Camera .



System parameters

"Host name" The text displays the title at the top of the main page.

"Turn off the LED indicator" Check this option to shut off the LED on the rear. It can prevent the camera's operation being noticed.

"Keep current date and time" Click on this to reserve the current date and time of the IT3G320-IT3G320W Network Camera . An internal real-time clock maintains the date and time even when the power of the system is turned off.

"Sync with computer time" Synchronizes the date and time of the IT3G320-IT3G320W Network Camera with the local computer. The read-only date and time of the PC is displayed as updated.

"Manual" Adjust the date and time according to what is entered by the Administrator. Notice the format in the related fields while doing the entry.

"Automatic" Synchronize with the NTP server over the Internet whenever the IT3G320-IT3G320W Network Camera starts up. It will fail if the assigned time-server cannot be reached.

"NTP server" Assign the IP address or domain name of the time-server. Leaving the text box blank connects the IT3G320-IT3G320W Network Camera to the default time-servers.

"Time zone" Adjust the time with that of the time-servers for local settings.

"Update interval" Select hourly, daily, weekly, or monthly update with the time on the NTP server.

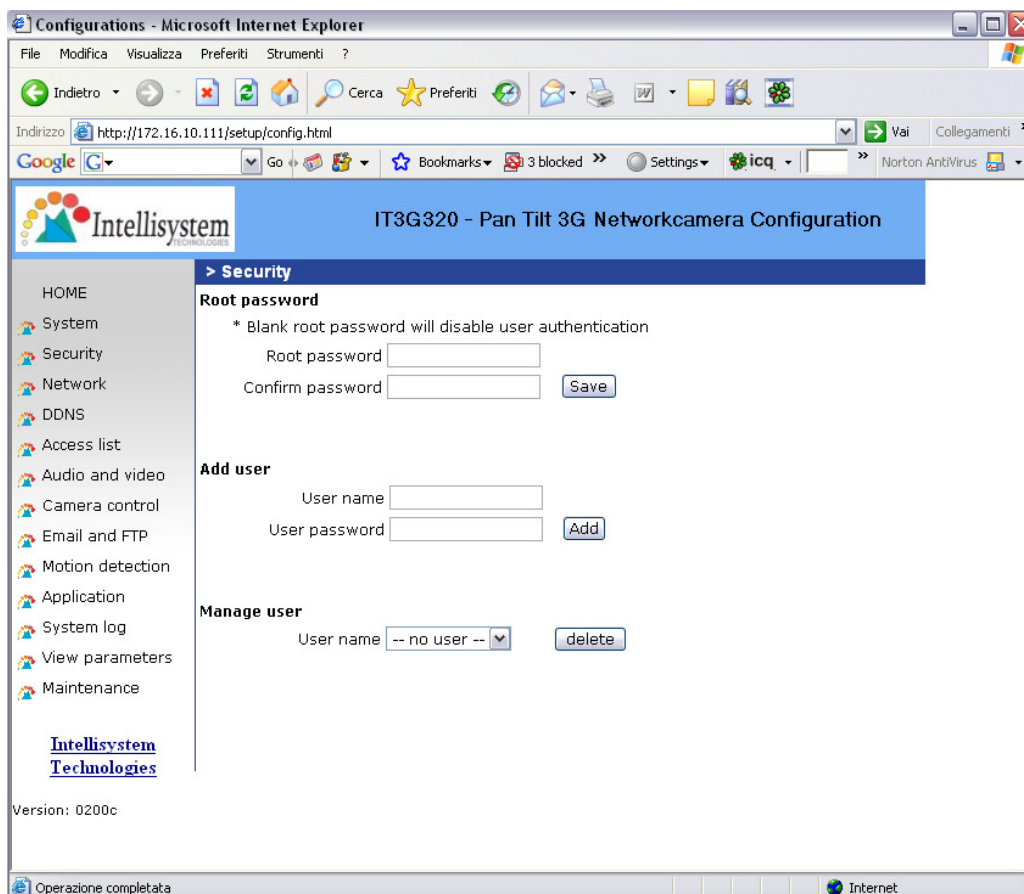
Remember to click on to immediately validate the changes. Otherwise, the correct time will not be synchronized.

Security settings

“Root password” Change the Administrator’s password by typing in the new password identically in both text boxes. The typed entries will be displayed as asterisks for security purposes. After pressing **Save**, the web browser will ask the Administrator for the new password for access.

“Add user” Type the new user's name and password and press **Add** to insert the new entry. The new user will be displayed in the user name list. There is a maximum of twenty user accounts.

“Manager user” Pull down the user list to find the user’s name and press **Delete** to complete.



<url> <http://<IT3G320-IT3G320W Network Camera >/setup/security.html>
<IT3G320-IT3G320W Network Camera > is the domain name or original IP address of the IT3G320-IT3G320W IT3G320-IT3G320W Network Camera .

Network settings

Any changes made on this page will restart the system in order to validate the changes. Make sure every field is entered correctly before clicking on .

Network type

"LAN" & "PPPoE"

The default type is LAN. Select PPPoE if using ADSL

"Get IP address automatically" & "Use fixed IP address"

The default status is **"Get IP address automatically"**. This can be tedious having to perform software installation whenever the IT3G320-IT3G320W Network Camera starts. Therefore, once the network settings, especially the IP address, have been entered correctly, select **"Use fixed IP address"** then the IT3G320-IT3G320W Network Camera will skip installation at the next boot. The IT3G320-IT3G320W Network Camera can automatically restart and operate normally after a power outage. Users can run IP installer to check the IP address assigned to the IT3G320-IT3G320W Network Camera if the IP address is forgotten or using the UPnP function provided by the IT3G320-IT3G320W Network Camera (MS Windows XP provides UPnP function at **My Network Place**).

"IP address" This is necessary for network identification.

"Subnet mask" This is used to determine if the destination is in the same subnet. The default value is "255.255.255.0".

"Default router" This is the gateway used to forward frames to destinations in a different subnet. Invalid router setting will fail the transmission to destinations in different subnet.

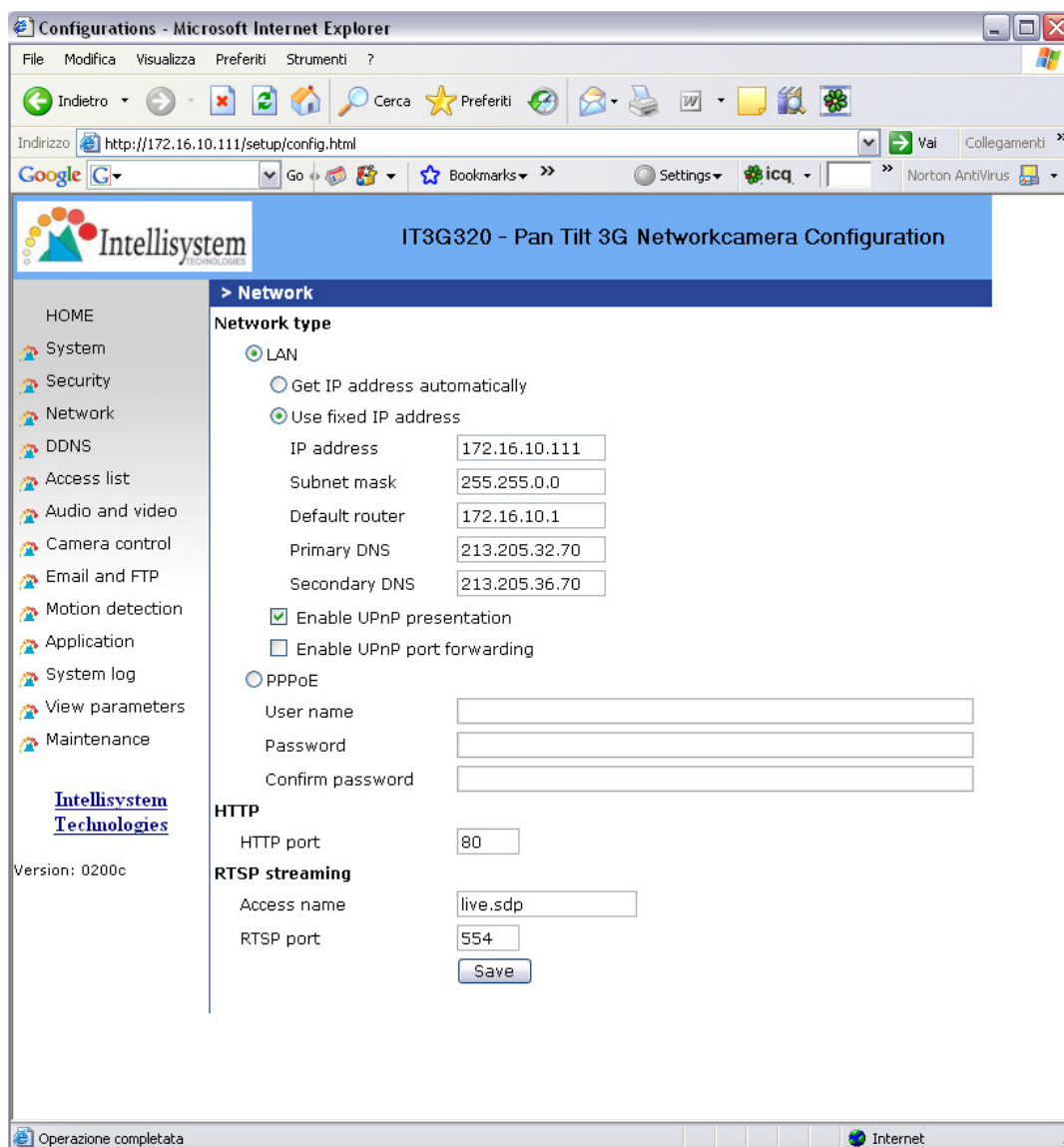
“Primary DNS” The primary domain name server that translates hostnames into IP addresses.

“Secondary DNS” Secondary domain name server that backups the Primary DNS.

“Enable UPnP presentation” Enable the UPnP camera short cut

“Enable UPnP port forwarding” Enable uPnP port forwarding

“PPPoE” If using the PPPoE interface , fill the following settings from ISP



Configurations - Microsoft Internet Explorer

Indirizzo: <http://172.16.10.111/setup/config.html>

IT3G320 - Pan Tilt 3G Networkcamera Configuration

> Network

Network type

LAN

Get IP address automatically

Use fixed IP address

IP address:

Subnet mask:

Default router:

Primary DNS:

Secondary DNS:

Enable UPnP presentation

Enable UPnP port forwarding

PPPoE

User name:

Password:

Confirm password:

HTTP

HTTP port:

RTSP streaming

Access name:

RTSP port:

Operazione completata

“User name” The login name of PPPoE account

“Password” The password of PPPoE account

“Confirm password” Input password again for confirmation

HTTP

“Http port” This can be other than the default Port 80. Once the port is changed, the users must be notified the change for the connection to be successful. For instance, when the Administrator changes the HTTP port of the IT3G320-IT3G320W IT3G320-IT3G320W Network Camera whose IP address is 192.168.0.100 from 80 to 8080, the users must type in the web browser “http://192.168.0.100:8080” instead of “http://192.168.0.100”.

RTSP Streaming

“Access name” This is the access URL for making connection from client software. Using rtsp://<ip address>/<access name> to make connection

“RTSP port” This can be other than the default Port 554

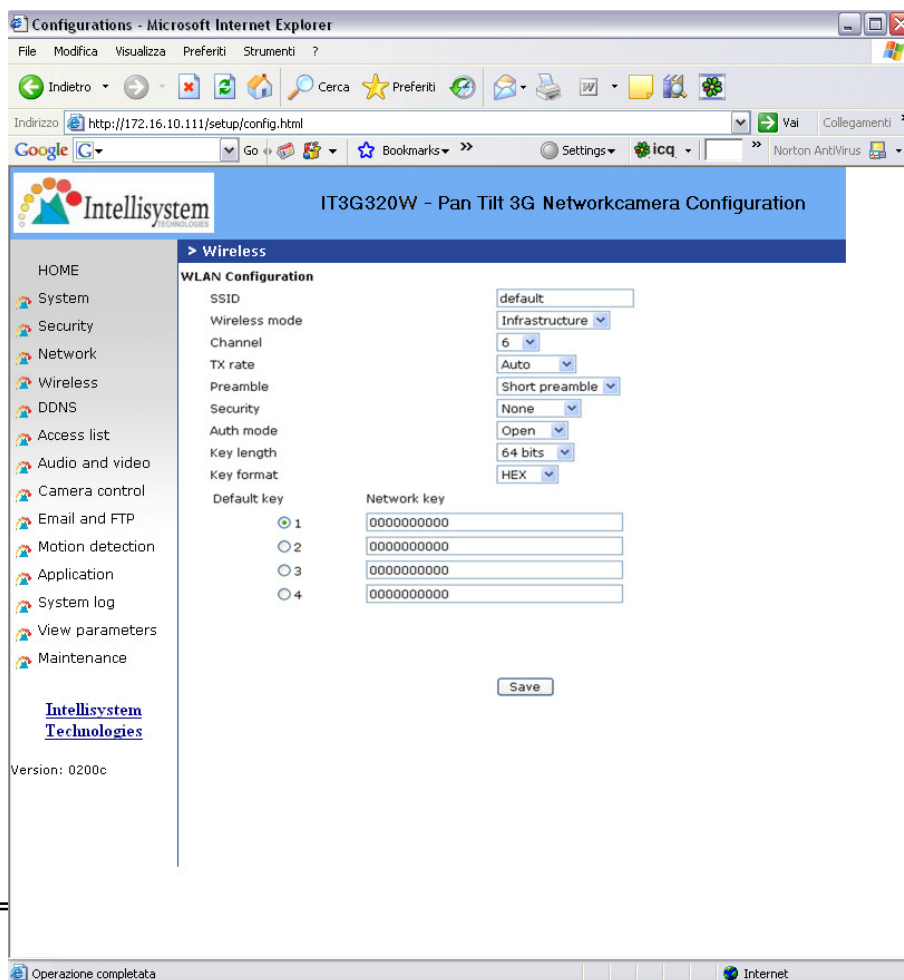
<url> *http://<IT3G320-IT3G320W Network Camera >/setup/network.html*

<IT3G320-IT3G320W Network Camera > is the domain name or original IP address of the IT3G320-IT3G320W IT3G320-IT3G320W Network Camera .

WLAN Configuration (For IT3G320W Wireless Model Only)

✓ **“SSID”** (Service Set Identifier), it is a name that identifies a wireless network. Access Points and wireless clients attempting to connect to a specific WLAN (Wireless Local Area Network) must use the same SSID. The default setting is **default**. *Note: The maximum length of SSID is 32 single-byte characters and SSID can't be any of ", <, > and space character.*

✓ **“Wireless mode”** Clicking on the pull-down menu to select from the following options:



✓ **“Infrastructure”** Make the IT3G320W Network Camera connect to the

WLAN via an Access Point. (The default setting).

✓ **"Ad-Hoc"** Make the IT3G320W Network Camera connect directly to a host equipped with a wireless adapter in a peer-to-peer environment.

✓ **"Channel"** While in infrastructure mode, the channel is selected automatically to match the channel setting for the selected Access Point. In Ad-Hoc mode, the channel must be manually set to the same channel for each wireless adapter. The default channel setting depends on the installed region.

✓ **"TX rate"** This field is for selecting the maximum transmission rate on the network. The default setting is "auto", that means that the IT3G320W Network Camera will try to connect to the other wireless device with highest transmitting rate.

✓ **"Security"** Select the data encrypt method

✓ **"None"** – No data encryption.

✓ **"WEP"** – allows communication only with other devices with identical WEP settings.

✓ **"WPA-PSK"** – Use WPA pre-shared key.

✓ **"Auth Mode"** Choosing one of the following modes, (Open is the default setting).

✓ **"Open"** – communicates the key across the network.

✓ **"Shared"** – allows communication only with other devices with identical WEP settings.

✓ **"Key length"** The administrator can select the key length among 64 or 128 bits. 64bits is the default setting.

✓ **"Key format"** Hexadecimal or ASCII. **"HEX"** is the default setting.

✓ **"HEX"** digits consist of the numbers 0~9 and the letters A-F.

✓ **"ASCII"** is a code for representing English letters as numbers from 0-127 except ", <, > and space characters that are reserved.

✓ **"Network Key"** Entering a key in either hexadecimal or ASCII format. When selecting different key length, acceptable input length is listed as following:

- ✓ 64 bits key length: 10 Hex digits or 5 characters.
- ✓ 128 bites key length: 26 Hex digits or 13 characters.

Note: When 22("), 3C(<) or 3E(>) are input in network key, the key format can't be changed to ASCII format.

✓ **"Algorithm"** Choosing one of the following algorithm for WPA-PSK modes

✓ **"TKIP"**

✓ **"AES"**

✓ **"Pre-shared Key"** Entering a key in ASCII format. The length of the key is 8 ~ 63

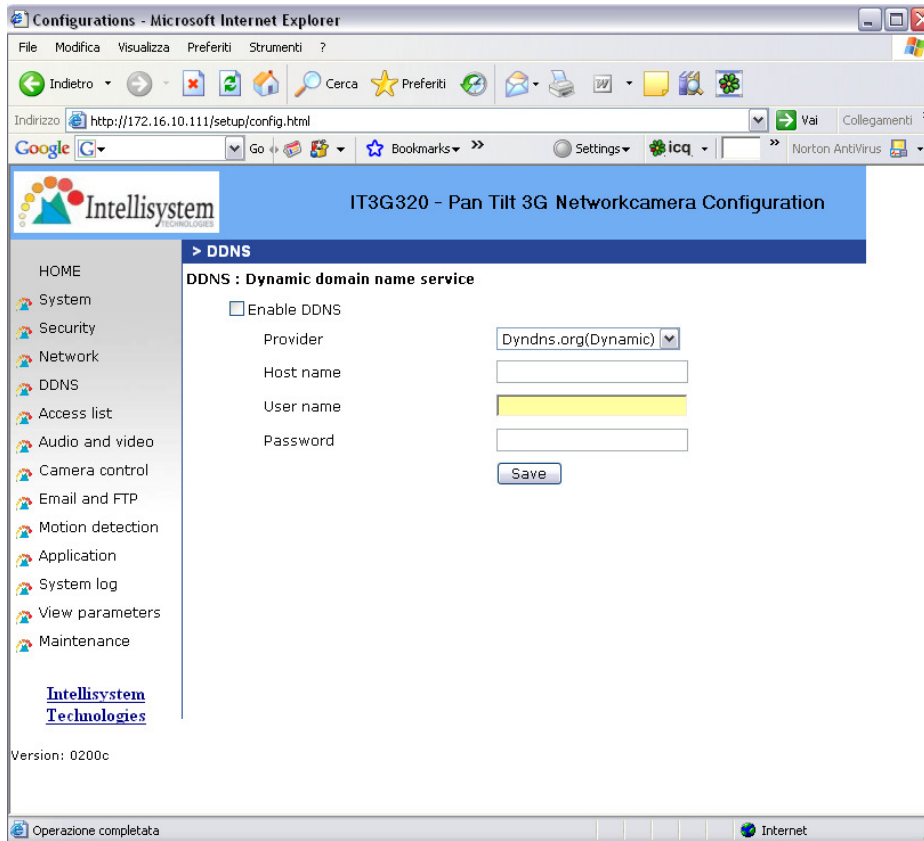


Some invalid settings may cause the system failing to respond. Change the configuration only if necessary and consult with your network supervisor or experienced users for correct settings. Once the system has lost contact, refer to Appendix A for reset and restore procedures.

<url> <http://<IT3G320W Network Camera >/setup/wireless.html>

< IT3G320W Network Camera > is the domain name or original IP address of the IT3G320W Network Camera .

DDNS



“Enable DDNS”

This option turns on the DDNS function.

“Provider”

The provider list contains four hosts that provide DDNS services. Please connect to the service provider's website to make sure the service charges.

“Host Name”

If the User wants to

use DDNS service, this field must be filled. Please input the hostname that is registered in the DDNS server.

“**Username/E-mail**” The Username or E-mail field is necessary for logging in the DDNS server or notify the User of the new IP address. Note: when this field is input as “Username” the following field must be input as “Password”.

“**Password/Key**” Please input the password or key to get the DDNS service.

“**Save**” Click on this button to save current settings for the DDNS service and UPnP function.

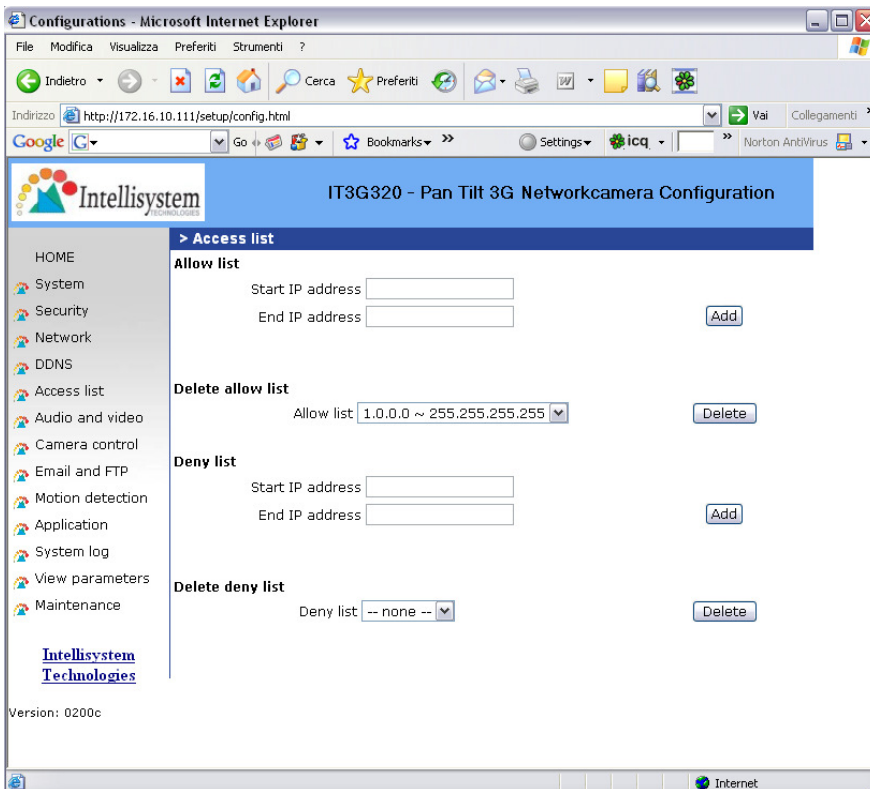
<url> <http://<IT3G320-IT3G320W Network Camera >/setup/ddns.html>

<IT3G320-IT3G320W Network Camera > is the domain name or original IP address

of the IT3G320-IT3G20W IT3G320-IT3G320W Network Camera .

Access List

The access list is to control the access permission of clients by checking the client IP address.



There are two lists for permission control: **Allow List** and **Deny List**.

Only those clients whose IP address is in the **Allow List** and not in the **Deny List** can connect to the Video Server or IT3G320-IT3G320W Network Camera for receiving the

audio/video streaming.

Both **Allow List** and **Deny List** consist of a list of IP ranges. If you want to add a new IP address range, type the **Start IP Address** and **End IP Address** in the text boxes and click on the **Add** button. If you want to remove an existing IP address range, just select from the pull-down menu and click on the **Delete** button. Both the Allow List and Deny List can have 20 entries.

<url> <http://<IT3G320-IT3G320W Network Camera >/setup/accesslist.html>
<IT3G320-IT3G320W Network Camera > is the domain name or original IP address of the IT3G320-IT3G20W IT3G320-IT3G320W Network Camera .

Audio and Video

Video Settings

"Video title" The text string can be displayed on video

"Color" Select either for color or monochrome video display.

"Frame Size" There are three options for video sizes. **"160x120"**, **"320x240"**, **"640x480"**.

"Power line frequency (for fluorescent light)", the fluorescent light will flash according to the power line frequency that depends on local utility. Change the frequency setting to eliminate uncomfortable flash image when the light source is only fluorescent light.

There are three dependent parameters provided for video performance adjustment.

"key frame interval"

"Max frame rate" This limits the maximal refresh frame rate, which can be combined with the **"Video quality"** to optimize bandwidth utilization and video quality. Choose **"Constant bit rate"** If the user wants to fix the bandwidth utilization regardless of the video quality or choose **"Fixed quality"** and select the desired bandwidth. The video quality may be poor due to the sending of maximal frame rate within the limited bandwidth when images are moving rapidly. Consequently, to ensure detailed video quality (quantization rate) regardless of the network, it will utilize more bandwidth to send the maximal frames when images change drastically.

Video orientation

"Flip" Vertically rotate the video.

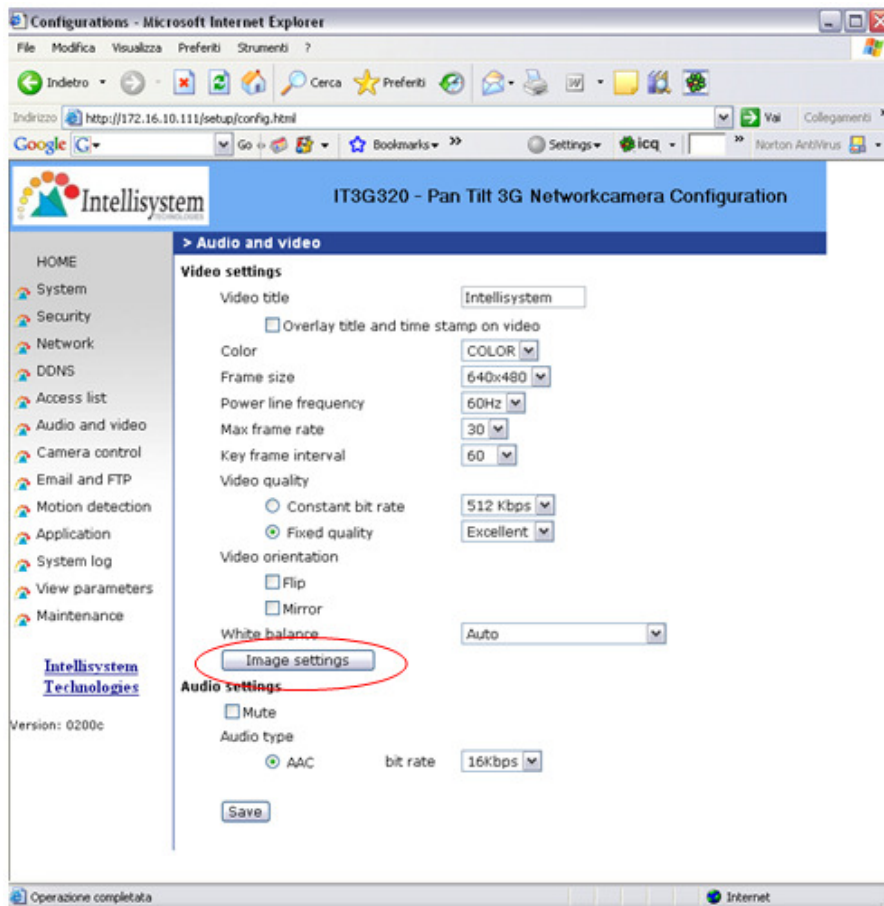
"Mirror" Horizontally rotate the video. Check options both if the IT3G320-IT3G320W Network Camera is installed upside down.

"White balance" Adjust the value for best color temperature.

Audio settings

"Mute" Audio mute

"Audio type" Select audio codec **"AAC"** and the bit rate



<url> <http://<IT3G320-IT3G320W Network Camera >/setup/audiovideo.html>
<IT3G320-IT3G320W Network Camera > is the domain name or original IP address
of the IT3G320-IT3G320W IT3G320-IT3G320W Network Camera .

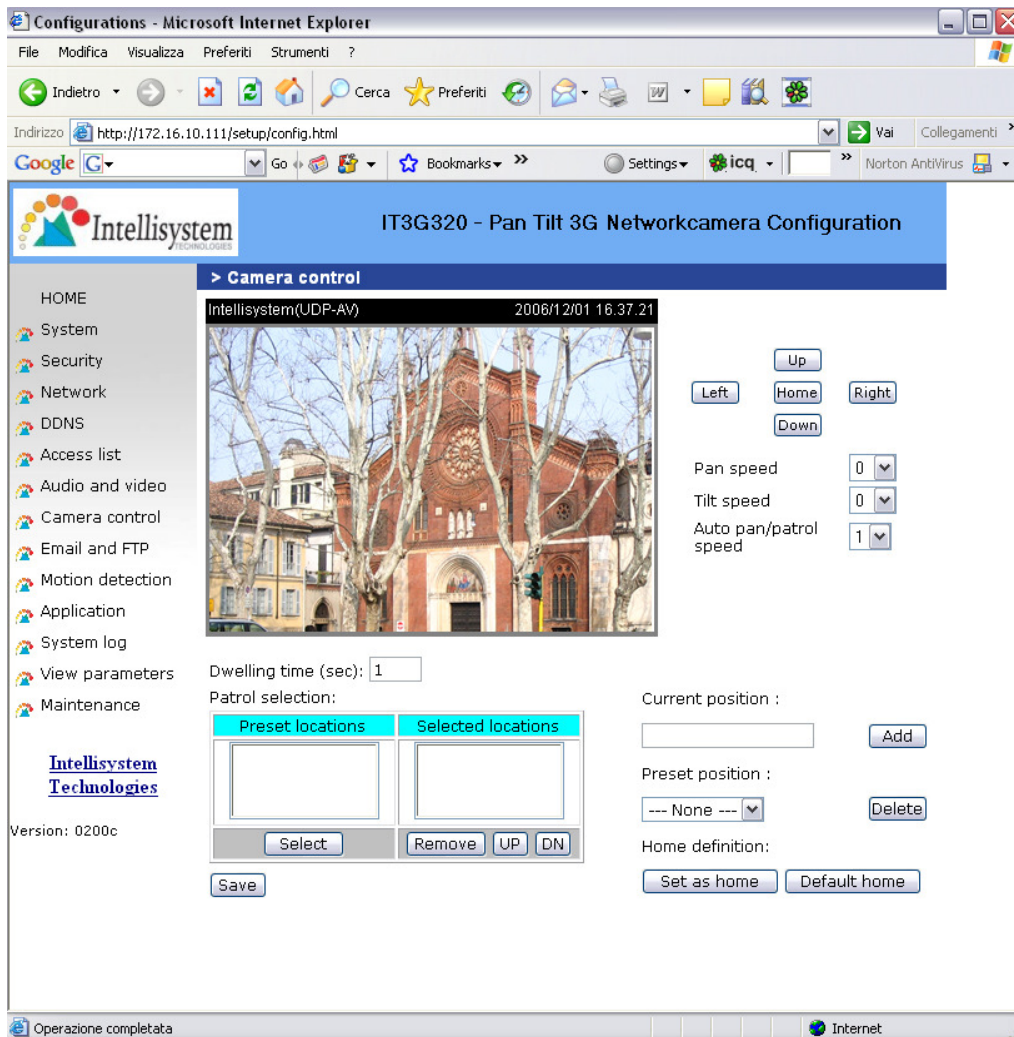
Image Settings

Image settings Click on this button to pop up another window to tune "**Brightness**", "**Contrast**", "**Hue**" and "**Saturation**" for video compensation. Each field has eleven levels ranged from -5 to +5. In "**Brightness**" and "**Contrast**" fields the value 0 indicates auto tuning. The user may press **Preview** to fine-tune the image. When the image is O.K., press **Save** to set the image settings. **Restore** Click on this to recall the original settings without incorporating the changes.



Camera Control

On the Camera Control page, there are two main function control areas:



1. Camera control area

The pan and tilt functions can be controlled with these buttons. The "Left" button aims the camera to the left; the "Right", "Up", and "Down" buttons aim the camera accordingly. The "Home" button aims the camera to the center.

"Pan speed". This controls the range of the horizontal movement of the camera. The greater the value, the greater angular movement when performing the "Left" or "Right" functions.

"Tilt speed". This controls the range of the vertical movement of the camera. The greater the value, the greater angular movement when performing the "Up" or "Down" functions would be.

"Auto pan/patrol speed". This defines the speed of panning and patrol, the greater the value, the faster the speed.

2. Preset function area

"Current position". If the User wants to save the current view as a preset location, enter a name for each of the current video view at "current position" and click on the "Add" button. The camera allows for 20 preset locations.

"Preset position". This keeps a list for preset positions. Clicking on the "Delete" button will remove the current selected position from the preset list.

"Set as home". Click on the button will set the current aimed position as home of the IT3G320-IT3G320W Network Camera . Each time the IT3G320-IT3G320W IT3G320-IT3G320W Network Camera reboots or after calibration, it will automatically aim to the defined home position.

"Default home". Restore home position to factory default home by clicking on this button.

"Dwelling time". The value set here specifies:

- 1.** The stop time of each preset location during auto patrol of the IT3G320-IT3G320W IT3G320-IT3G320W Network Camera .

- 2.** The stay time at the most left and the most right positions when the IT3G320-IT3G320W IT3G320-IT3G320W Network Camera is doing auto panning.

"Patrol selection". After the User has saved a list of preset positions, the "Preset locations" box will also keep a list of the preset positions. And once the "Select>" button is clicked, the "Selected location" box will keep a list of the patrol stops. The "Remove" button removes the preset position from the patrol stops. The "UP", "DOWN" buttons adjust the order of the patrol stops. Several preset positions can be added to the patrol stops. The camera can accept up to 40 patrol stops.

"Save" button. The button is valid for "Auto pan/patrol speed", "Dwelling time" and "Patrol selections". In other words, after changing these settings, if the "Save" button is not clicked, the new setting of the camera will not take effect.

Email & FTP

Email

When the SMTP server support SMTP authentication, users need to give the valid user name and password to send email via the server.

"Sender email address", the email address of the sender.

There are two external mail server can be configured, primary and secondary email server, The IT3G320-IT3G320W Network Camera will use primary server as default , and use secondary server when primary server is unreachable.

"Server address". The domain name or IP address of the external email server.

"User name". This granted user name on the external email server.

"Password". This granted password on the external email server.

"Recipient email address". The email address of the recipients for snapshots or log file. Multiple recipients must be separated by semicolon, `;`.

FTP

"Built-in FTP server port number". This can be other than the default port 21. The user can change this value from 1025 to 65535. After the changed, the external FTP client program must change the server port of connection accordingly.

There are two external FTP server can be configured, primary and secondary FTP server, The IT3G320-IT3G320W Network Camera will use primary server as default , and use secondary server when primary server is unreachable.

"Server address". The domain name or the IP address of the external FTP server. The following user settings must be correctly configured for remote access.

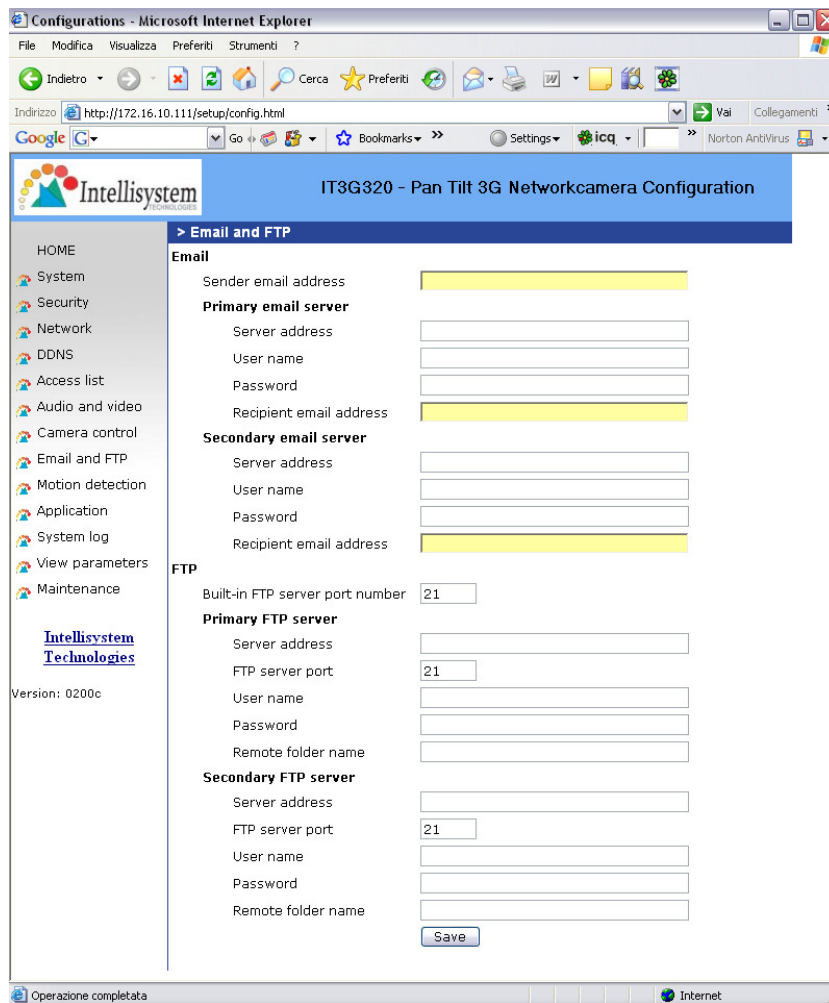
"FTP server port". This can be other than the default port 21. The user can

change this value from 1025 to 65535.

"User name". Granted user name on the external FTP server.

"Password". Granted password on the external FTP server.

"Remote folder name". Granted folder on the external FTP server. The string must conform to that of the external FTP server. Some FTP servers cannot accept preceding slash symbol before the path without virtual path mapping. Refer to the instructions for the external FTP server for details. The folder privilege must be open for upload.



<url> <http://<IT3G320-IT3G320W Network Camera >/setup/mailftp.html>

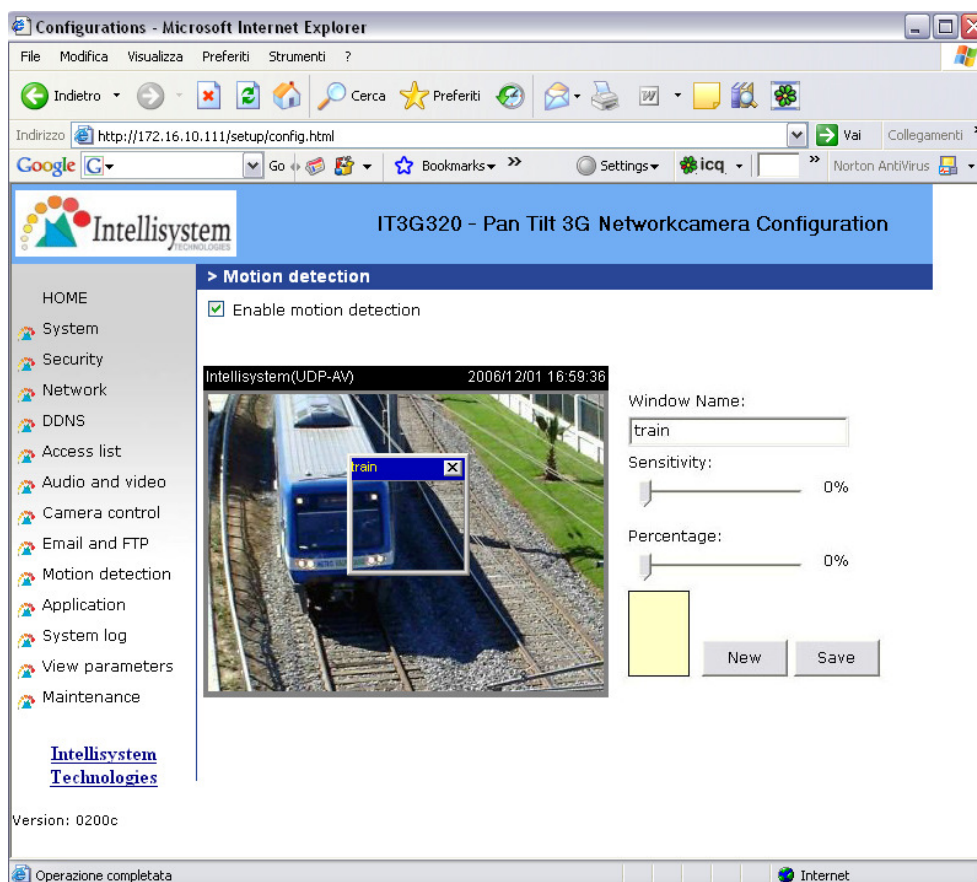
<IT3G320-IT3G320W Network Camera > is the domain name or original IP address of the IT3G320-IT3G320W IT3G320-IT3G320W Network Camera .

Motion detection

"Enable motion detection". Check this option to turn on motion detection.

New

Click on this button to add a new window. At most three windows can exist simultaneously. Use the mouse to click, hold, and drag the window frame to resize or the title bar to move. Clicking on the 'x' at the upper right-hand corner of the window to delete the window. Remember to save in order to validate the changes.



Save

Click on this button to save the related window settings. A graphic bar will rise or fall depending on the image variation. A green bar means the image variation is under monitoring level and a red bar means the image variation is over monitoring level. When the bar goes red, the detected window will also be outlined in red. Going back to the homepage, the monitored window is hidden but the red frame shows when motion is

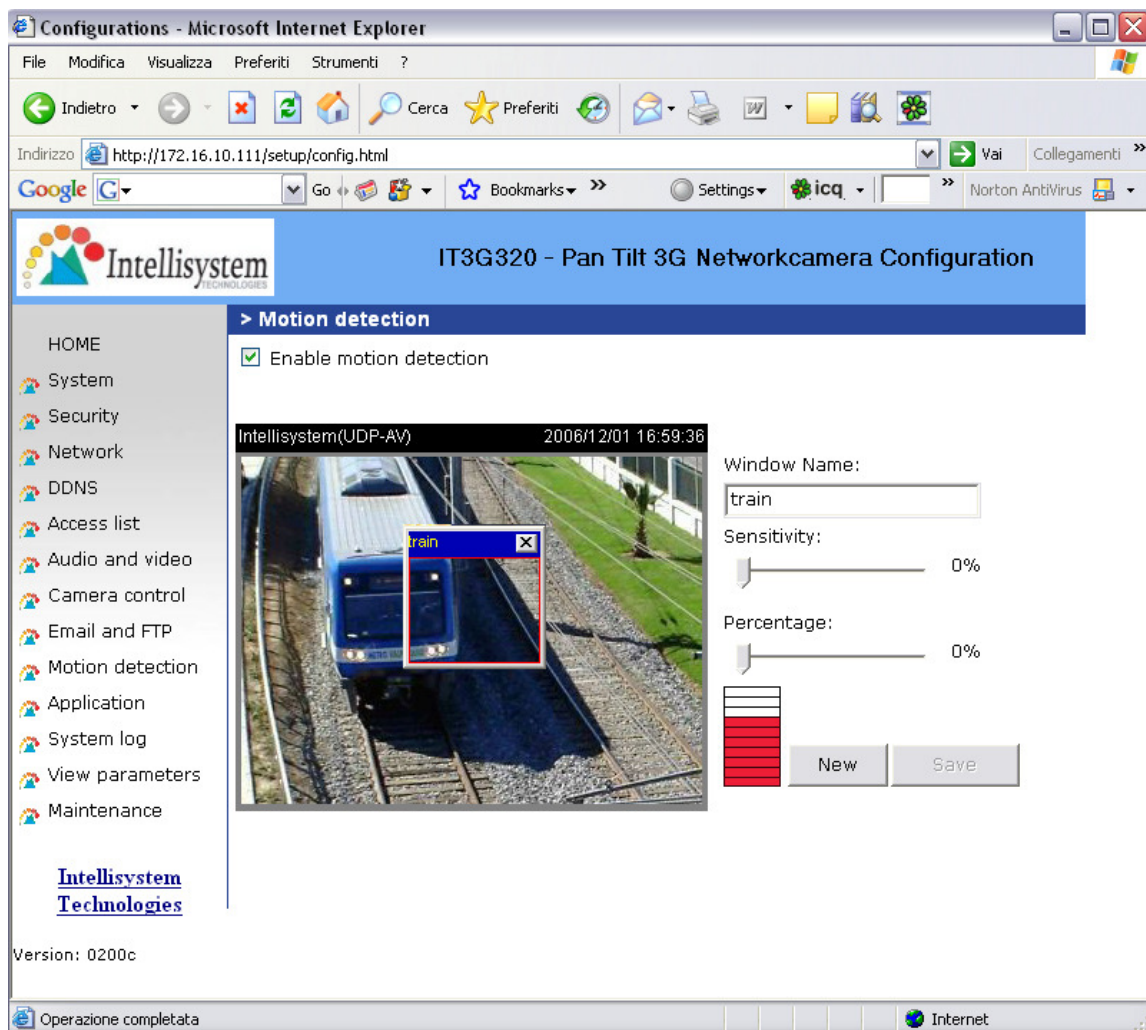
detected.

"Window Name". The text will show at the top of the window.

"Sensitivity". This sets the endurable difference between two sequential images.

"Percentage". This sets the space ratio of moving objects in the monitoring window. Higher sensitivity and small percentage will allow easier motion detection.

The following figure shows the screen when **Save** is clicked. The monitoring window has been outlined in red and the graphic bar goes red since the train is moving.



Application settings

Snapshot

"Enable snapshot". Enable/Disable snapshot application.

Weekly schedule

"Sun" ~ "Sat" Select the days of the week to perform the application.
Select **"Always"** or input the time interval.

Snapshot file name prefix

The prefix name will be added on the file name of the snapshot images.

Send out the snapshot while motion detection

There are three windows for motion detection each can be assigned a name. Select the windows which need to be monitored. If motion detection has not been set up, **"undefined"** will be shown instead of the window title. If this happens, clicking on "Motion detection" and a note will show to direct the User to the configuration page for motion detection.

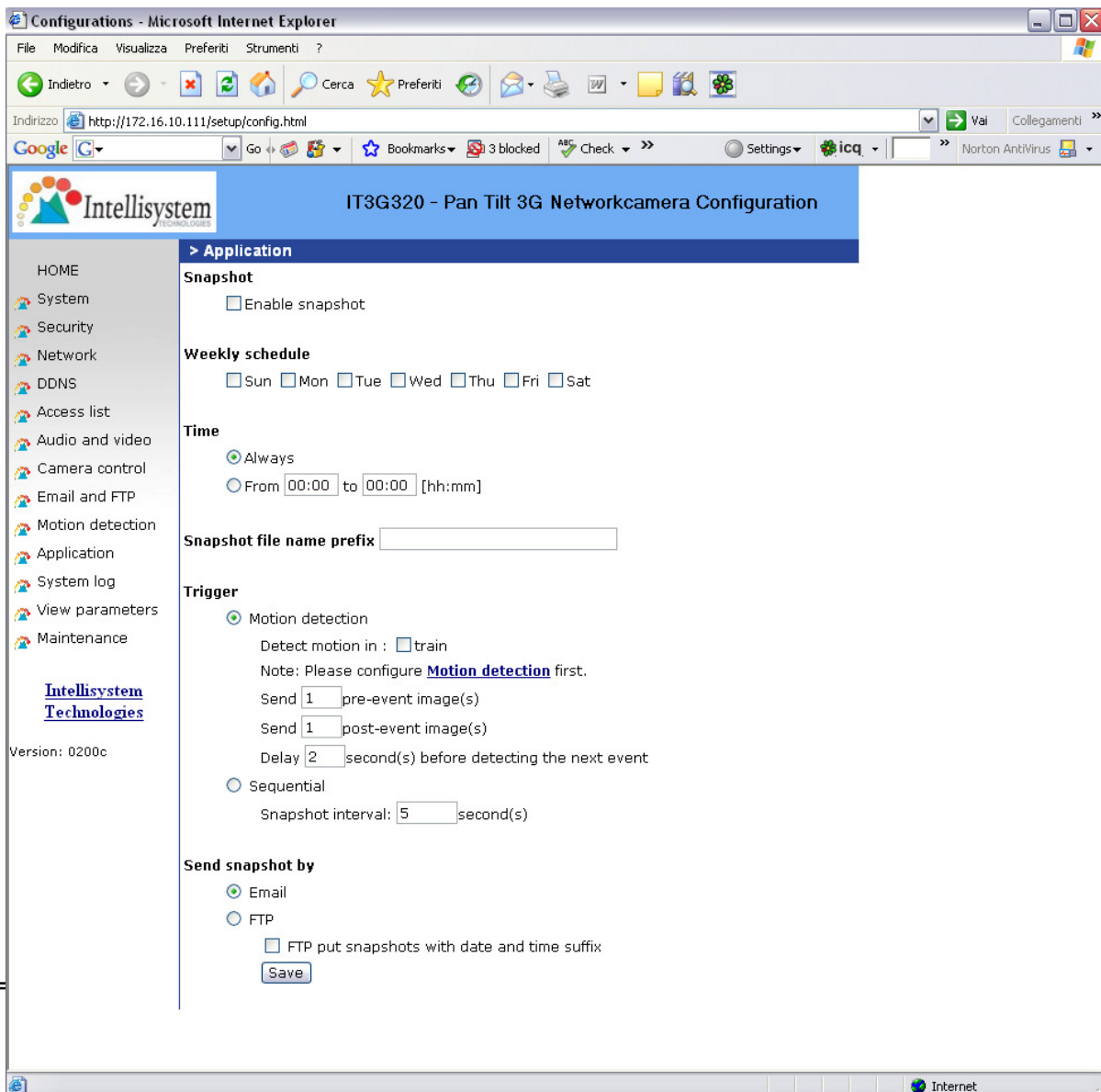
"Send pre-event image(s)". The number of pre-snapshots will be captured and send when a condition is triggered.

"Send post-event image(s)". The number of post-snapshots will be captured and send when a condition is triggered.

"Delay second(s) before detecting next motion". Set the time delay before restarting to check on the triggering condition when the current condition is triggered.

Sequential operation

"Snapshot interval : second(s)" IT3G320-IT3G320W IT3G320-IT3G320W Network Camera will send snapshots at the specified intervals to the external server using the method selected below. Remember: This operation is still subject to the conditions set in the weekly schedule.



Method for sending snapshot

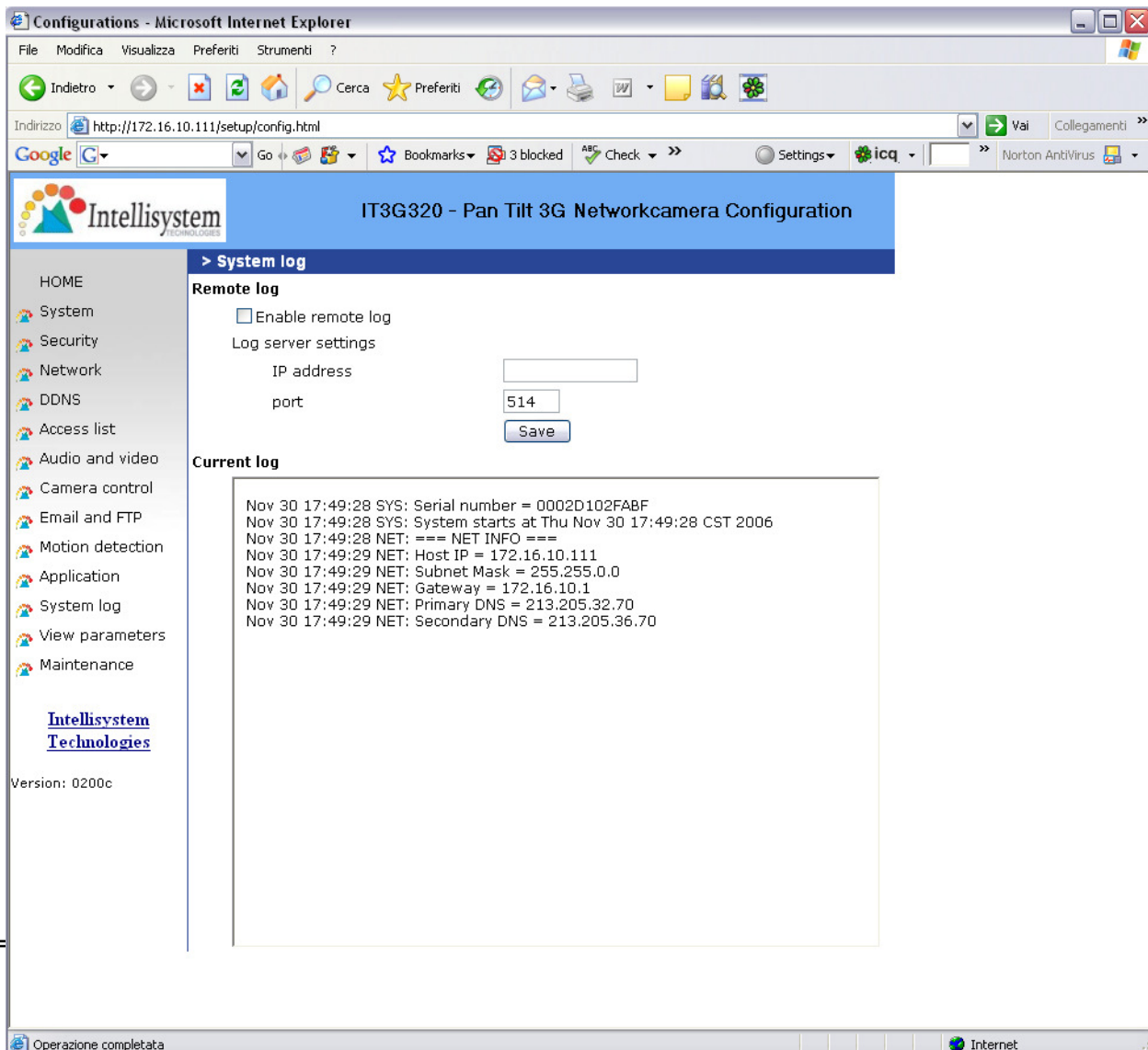
“Email” This selects the uploading method following the intervals set above. The snapshot named “prefix-yyyymmdd-hhmmss.jpg” will be attached in the email.

“FTP” The snapshots will be uploaded to the external FTP server with the file name defined in the next option. This can also be used to refresh the captured images stored in the external web server to build creative homepages.

“FTP put snapshots with date and time suffix” This option sets up the snapshot capture date and time, which can be used to easily differentiate the snapshot file names in the sequential operation. For instance, “prefix-20030102-030405.jpg” means the JPEG image was captured in the year 2003, January the 2nd, at 3 o'clock, 4 minute, and 5 second. If this suffix is omitted, the file named “video.jpg” on the external FTP server will be refreshed at the specified interval.

System log

The IT3G320-IT3G320W IT3G320-IT3G320W Network Camera support log the system messages on remote server. The protocol is compliant to RFC 3164. If you have external Linux server with syslogd service, use "-r" option to turn on the facility for receiving log from remote machine. Or you can use some software on Windows which is compliant to RFC 3164.



The screenshot shows the configuration page for the IT3G320 - Pan Tilt 3G Networkcamera. The browser window is titled "Configurations - Microsoft Internet Explorer" and the address bar shows "http://172.16.10.111/setup/config.html". The page title is "IT3G320 - Pan Tilt 3G Networkcamera Configuration".

The left sidebar contains a navigation menu with the following items: HOME, System, Security, Network, DDNS, Access list, Audio and video, Camera control, Email and FTP, Motion detection, Application, System log, View parameters, and Maintenance. At the bottom of the sidebar, there is a link to "Intellisystem Technologies" and the text "Version: 0200c".

The main content area is titled "> System log" and is divided into two sections:

- Remote log**: Includes a checkbox for "Enable remote log" (which is currently unchecked), a "Log server settings" section with an "IP address" input field, a "port" input field containing the value "514", and a "Save" button.
- Current log**: A text area displaying system logs with the following content:

```
Nov 30 17:49:28 SYS: Serial number = 0002D102FABF
Nov 30 17:49:28 SYS: System starts at Thu Nov 30 17:49:28 CST 2006
Nov 30 17:49:28 NET: === NET INFO ===
Nov 30 17:49:29 NET: Host IP = 172.16.10.111
Nov 30 17:49:29 NET: Subnet Mask = 255.255.0.0
Nov 30 17:49:29 NET: Gateway = 172.16.10.1
Nov 30 17:49:29 NET: Primary DNS = 213.205.32.70
Nov 30 17:49:29 NET: Secondary DNS = 213.205.36.70
```

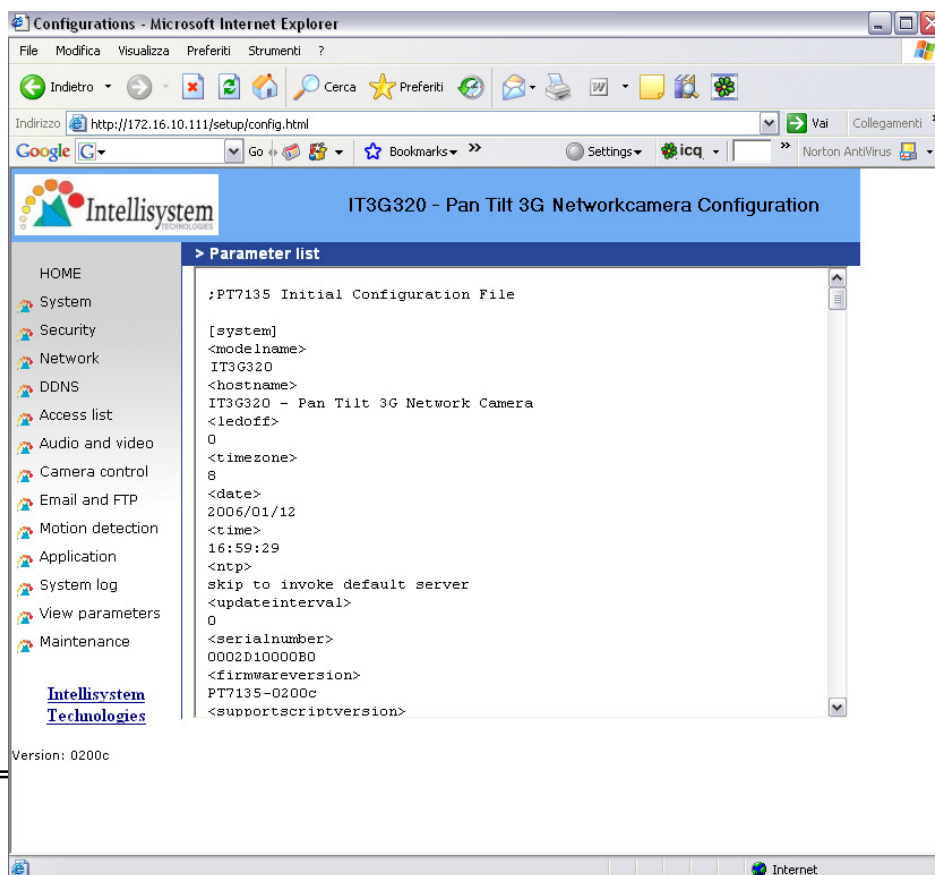
The status bar at the bottom of the browser window shows "Operazione completata" and "Internet".

Check **"Enable remote log"** and input the **"IP address"** and **"port"** number of the log server to enable the remote log facility.

In the **"Current log"**, it displays the current system log file. The content of the log provides useful information about configuration and connection after system boot-up.

Viewing system parameters

Click on this link on the configuration page to view the entire system's parameter set. The content is the same as those in CONFIG.INI.



Configurations - Microsoft Internet Explorer

Indietro - Cerca - Preferiti - Strumenti ?

Indirizzo <http://172.16.10.111/setup/config.html> Vai Collegamenti >>

Google

Intellisystem TECHNOLOGIES

IT3G320 - Pan Tilt 3G Networkcamera Configuration

> Parameter list

```
;PT7135 Initial Configuration File

[system]
<modelName>
IT3G320
<hostname>
IT3G320 - Pan Tilt 3G Network Camera
<ledoff>
0
<timezone>
8
<date>
2006/01/12
<time>
16:59:29
<ntp>
skip to invoke default server
<updateinterval>
0
<serialnumber>
0002D10000B0
<firmwareversion>
PT7135-0200c
<supportscriptversion>
```

HOME

- System
- Security
- Network
- DDNS
- Access list
- Audio and video
- Camera control
- Email and FTP
- Motion detection
- Application
- System log
- View parameters
- Maintenance

[Intellisystem Technologies](#)

Version: 0200c

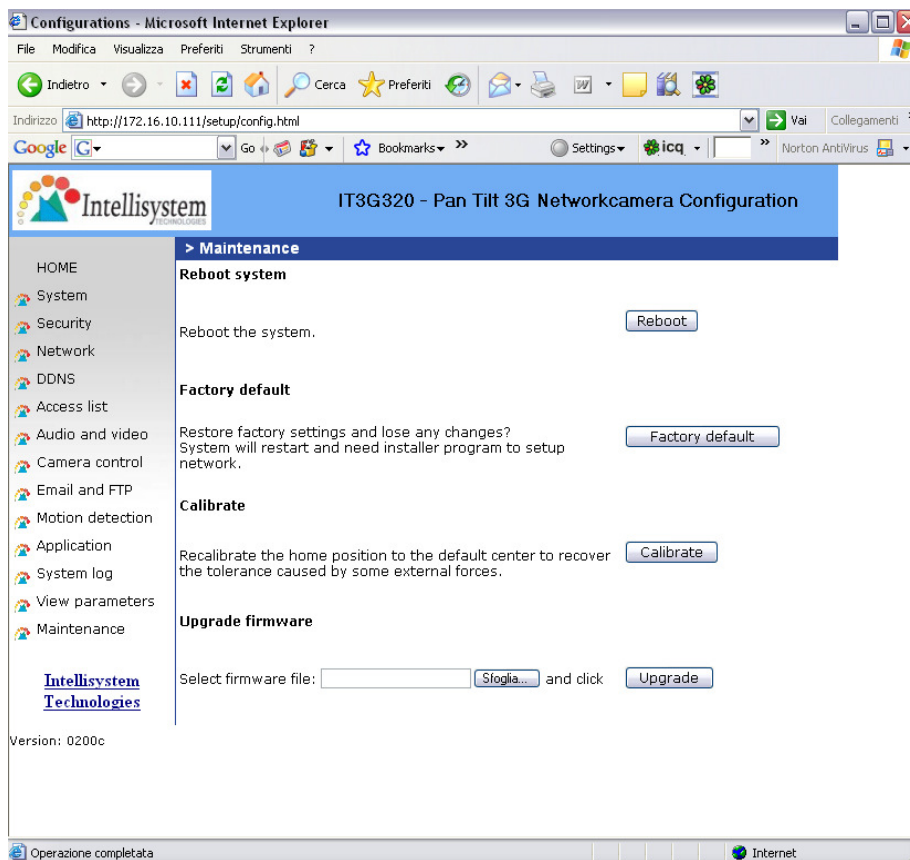
Internet

Maintenance

Four actions can be selected

“reboot” click the reboot button to restart system

“factory default” Click on Factory default button on the configuration page to restore the factory default settings. Any changes made so far will be lost and the system will be reset to the initial factory settings. The system will restart and require the installer program to set up the network again.



“Calibrate”

Recalibrate the home position to the default center to recover the tolerance caused by some external forces. This function is the same as the **“Center”** button on the Remote Controller. Please note that there is no confirming message box after clicking on the **“Calibrate”** button, the IT3G320-IT3G320W Network Camera will calibrate immediately.

“upgrade firmware” Select the firmware file and click upgrade button

Appendix

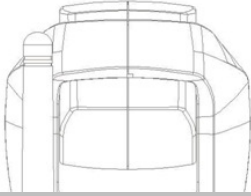
A. Troubleshooting

Status LED

The following table lists the LED patterns in general.

Condition	LED color
Loading system after power on	Steady red
During booting procedure	Steady green, blue and red
Detecting and setting network	Steady green and blue. Blink red till IP address is confirmed
After network is setup (system up)	Blink green every second and steady red
During the upgrade firmware process	Blink green every second and fast blink red
Enable audio	Steady blue. Disable audio will turn off blue LED.

Reset and restore



There is a button in the back side of the IT3G320-IT3G320W Network Camera . It is used to reset the system or restore the factory default settings.

RESET:

1. Press on the button continuously.
2. Wait for all LED blink fast.
3. Free the button.



Restoring the factory defaults will erase any previous settings.

B. URL commands of the IT3G320-IT3G320W

Network Camera

For some customers who already have their own web site or web control application, the IT3G320-IT3G320W IT3G320-IT3G320W Network Camera can be easily integrated through convenient URLs. This section lists the commands in URL format corresponding to the basic functions of the IT3G320-IT3G320W IT3G320-IT3G320W Network Camera .

Get server parameter values

Note: This request require administrator access

Method: GET/POST

Syntax:

```
http://<IT3G320/IT3G320                               IP
Address>/cgi-bin/admin/getparam.cgi?[<parameter>]
[&<parameter>...]
```

Where the *<parameter>* should be *<group>[_<name>]* or *<group>[.<name>]* If you do not specify the any parameters, all the parameters on the server will be returned. If you specify only *<group>*, the parameters of related group will be returned. When query parameter values, the current parameter value are returned. Successful control requests returns parameter pairs as follows.

Return:

```
HTTP/1.0 200 OK\r\n
Content-Type: text/html\r\n
Context-Length: <length>\r\n
\r\n
<parameter pair>
```

where *<parameter pair>* is *<parameter>=<value>\r\n*
[<parameter pair>]

<length> is the actual length of content.

Example: request IP address and it's response

Request:

```
http://192.168.0.123/cgi-bin/admin/getparam.cgi?network_ipaddress
```

Response:

```
HTTP/1.0 200 OK\r\n
Content-Type: text/html\r\n
Context-Length: 33\r\n
\r\n
network.ipaddress=192.168.0.123\r\n
```

Set server parameter values

Note: This request require administrator access

Method: GET/POST

Syntax:

```
http://<IT3G320/IT3G320 IP Address>/cgi-bin/admin/setparam.cgi?
[nosync=<value>&]<parameter>=<value>
[&<parameter>=<value>...][&return=<return page>]
```

parameter	value	description
<group>_<name>	value to assigned	Assign <value> to the parameter <group>_<name>..
return	<return page>	Redirect to the page <return page> after the parameter is assigned. The <return page> can be a full URL path or relative path according the the current path. If you omit this parameter, it will redirect to an empty page. <i>(note: The return page can be a general HTML file(.htm, .html) or a server script executable (.vsp) file. It cannot be a CGI command. It cannot have any extra parameters. This parameter must be put at the end of parameter list)</i>

Return:

```
HTTP/1.0 200 OK\r\n
Content-Type: text/html\r\n
Context-Length: <length>\r\n
\r\n
<parameter pair>
```

where <parameter pair> is
 <parameter>=<value>\r\n

[<parameter pair>]

Only the parameters that you set and readable will be returned.

Example: Set the IP address of server to 192.168.0.123

Request:

http://myserver/cgi-bin/admin/setparam.cgi?Network_IPAddress=192.168.0.123

Response:

HTTP/1.0 200 OK\r\n

Content-Type: text/html\r\n

Context-Length: 33\r\n

\r\n

network.ipaddress=192.168.0.123\r\n

Available parameters on the server

NOTE: The bold characters in table are the default value of each parameter.

Group: **System**

NAME	VALUE	DESCRIPTION
hostname (r/w)	<text string shorter than 40 characters>	host name of server <<Wireless>IT3G320-IT3G320W Network Camera >
ledoff (r/w)	0	Do not turn off the led indicator
	1	Turn off the led indicator
date (r/w)	<yyyy/mm/dd>	year, month and date separated by slash.
	<keep>	keep date unchanged
	<auto>	Using NTP to sync date/time automatically
time (r/w)	<hh:mm:ss>	hour, minute and second separated by colon.
	<keep>	keep date unchanged
	<auto>	Using NTP to sync date/time automatically
ntp (r/w)	<domain name or IP address>	NTP server <skip to invoke default server>
timezone (r/w)	-12 ~ 12	time zone, 8 means GMT +8:00 <8>
updateinterval (r/w)	0 ~ 2592000	0 to Disable automatic time adjustment, otherwise, it means the seconds between NTP automatic update interval.
		<0>
serialnumber (r)	<mac address>	12 characters mac address without hyphen connected
firmwareversion	<text string	The version of firmware, including model,

(r)	shorter than 39 characters>	company, and version number
restore (w)	0	Restore the system parameters to default value.
	Positive integer	Restore the system parameters to default value and restart the server after <value> seconds.
reset (w)	0 ~ 65535	Restart the server after <value> seconds.
	-1	Not restart the server.
viewmode (r/w)	0	Using the profile of viewing by computer
	1	Using the profile of viewing by mobile phone

Group: **Security**

NAME	VALUE	DESCRIPTION
username_<1~20> (r/w)	<text string shorter than 16 characters>	change user name. <blank>
userpass_<0~20> (r/w)	<text string shorter than 14 characters>	change user's password. The UserPass_0 is root's password. <blank>
userattr_<1~20> (r)	[conf]	show user's privilege. The privilege can be <blank> - only permit to view live media conf - Permit to change server's configuration <blank>
usercount (r)	1 ~ 21	The current account number on the server including root.<1>

Group: Network

NAME	VALUE	DESCRIPTION
type (r/w)	0	LAN
	1	PPPoE
pppoeuser (r/w)	<text string shorter than 80 characters>	PPPoE account user name <blank>
pppoepass (r/w)	<text string shorter than 15 characters>	PPPoE account password <blank>
resetip (r/w)(restart)	1	enable to get ipaddress, subnet, router, dns1, dns2 from DHCP server at next reboot
	0	Using preset ipaddress, subnet, router, dns1, dns2
ipaddress (r/w) (restart)	<IP address>	IP address of server <192.168.0.99>
subnet (r/w) (restart)	<IP address>	subnet mask <255.255.255.0>
router (r/w) (restart)	<IP address>	default gateway <blank>
dns1 (r/w) (restart)	<IP address>	primary DNS server <blank>
dns2 (r/w) (restart)	<IP address>	secondary DNS server <blank>
smtp1 (r/w)	<domain name or IP address, string shorter than 40 characters>	primary SMTP server <blank>
mailto1 (r/w)	<string shorter than 80 characters>	mail recipient address <blank>
mailuser1 (r/w)	<text string shorter than 63 characters>	User name of primary smtp server <blank>

mailpass1 (r/w)	<text string shorter than 15 characters>	Password of primary smtp server <blank>
smtp2 (r/w)	<domain name or IP address, string shorter than 40 characters>	secondary SMTP server <blank>
mailto2 (r/w)	<text string shorter than 80 characters>	mail recipient address <blank>
mailuser2 (r/w)	<text string shorter than 63 characters>	User name of secondary smtp server <blank>
mailpass2 (r/w)	<text string shorter than 15 characters>	Password of secondary smtp server <blank>
returnemail (r/w)	<text string shorter than 80 characters>	return email address <blank>
localftpport (r/w)	<positive number less than 65535>	FTP port <21>
ftp1 (r/w)	<domain name or IP address, string shorter than 40 characters >	primary FTP server <blank>
ftpport1 (r/w)	<positive number less than 65535>	primary FTP port <21>
ftpuser1 (r/w)	<text string shorter than 63 characters>	user name for primary FTP server <blank>
ftppass1 (r/w)	<text string shorter than 15 characters>	password for primary FTP server <blank>
ftpfolder1 (r/w)	<text string shorter than 40 characters>	upload folder in primary FTP server <blank>
ftppasvmode1 (r/w)	1	Enable passive mode of primary FTP server
	0	Disable passive mode of primary FTP server
ftp2 (r/w)	<domain name or IP address, string shorter than 40 characters >	secondary FTP server

ftpport2 (r/w)	<positive number less than 65535>	secondary FTP port <21>
ftpuser2 (r/w)	<text string shorter than 63 characters>	user name for secondary FTP server <blank>
ftppass2 (r/w)	<text string shorter than 15 characters>	password for secondary FTP server <blank>
ftpfolder2 (r/w)	<text string shorter than 40 characters>	upload folder in secondary FTP server <blank>
ftppasvmode2 (r/w)	1	Enable passive mode of primary FTP server
	0	Disable passive mode of primary FTP server
httpport (r/w) (restart)	<positive number less than 65535>	HTTP port <80>
rtspport (r/w) (restart)	<positive number less than 65535>	RTSP port <554>
videoport (r)	<positive number less than 65535>	video Channel port for RTP <5558>
audioport (r)	<positive number less than 65535>	audio Channel port for RTP <5556>
accessname (r/w)	<text string shorter than 20 characters>	RTSP access name <live.sdp>

Group: Wireless (restart)

ssid (r/w)	<text string shorter than 32 characters>	SSID for wireless lan settings <default>
wlmode (r/w)	0	Infrastructure mode
	1	Adhoc mode

txrate (r/w)	"NONE", "1M", "2M", "5.5M", "11M", "22M" for 802.11b+ "NONE", "1M", "2M", "5.5M", "11M", "6M", "9M", "12M", "18M", "24M", "36M", "48M", "54M", "Auto" for 802.11g	Transmit rate in Mbps <Auto>
encrypt (r/w)	0	None data encryption
	1	WEP data encryption
	2	WPA-PSK data encryption
authmode (r/w)	Open	Open mode
	Shared	Shared mode
keylength (r/w)	(64 , 128) for 802.11g	Key length in bits <64>
keyformat (r/w)	HEX	Key1 ~ Key4 will be represented in HEX format
	ASCII	Key1 ~ Key4 will be represented in ASCII format
keyselect (r/w)	1 ~ 4	Default key number <1>
key1 (r/w)	<text string shorter than 58 characters> (depends on keyformat & keylength)	WEP key1 for encryption <0000000000>
key2 (r/w)	<text string shorter than 58 characters> (depends on keyformat & keylength)	WEP key2 for encryption <0000000000>

key3 (r/w)	<text string shorter than 58 characters> (depends on keyformat & keylength)	WEP key3 for encryption <0000000000>
key4 (r/w)	<text string shorter than 58 characters> (depends on keyformat & keylength)	WEP key4 for encryption <0000000000>
algorithm (r/w)	TKIP	TKIP data encryption algorithm for WPA-PSK
	AES	AES data encryption algorithm for WPA-PSK
presharedkey (r/w)	<text string shorter than 58 characters>	WPA-PSK key for encryption <00000000>

Group: IPFilter

NAME	VALUE	DESCRIPTION
allowstart_<0~9> (r/w)	1.0.0.0 ~ 255.255.255.255	Allowed starting RTSP connection IP address <1.0.0.0>
allowend_<0~9> (r/w)	1.0.0.0 ~ 255.255.255.255	Allowed ending RTSP connection IP address <255.255.255.255>
denystart_<0~9> (r/w)	1.0.0.0 ~ 255.255.255.255	Denied starting RTSP connection IP address <blank>
denyend_<0~9> (r/w)	1.0.0.0 ~ 255.255.255.255	Denied ending RTSP connection IP address <blank>

Group: Video

NAME	VALUE	DESCRIPTION
text (r/w)	<text string shorter than 14 characters>	enclosed caption <blank>

codectype (r/w)	0	MPEG4
	1	MJPEG
keyinterval (r/w)	1, 3, 5, 10, 30, 60, 90, 120	Key frame interval <60>
size (r)	1	half
	2	half x 2
	3	normal
	4	normal x 2
	5	double
	256	This field is obsolete (use resolution)
resolution (r/w)	160x120	Video resolution 160 x 120
	320x240	Video resolution 320 x 240
	640x480	Video resolution 640 x 480
color (r/w)	0	monochrome
	1	color
quality (r/w)	0	fix bit rate
	1	fix quantization
quant (r/w)	1	lowest quality of video
	2	lower quality of video
	3	normal quality of video
	4	higher quality of video
	5	highest quality of video

bitrate (r/w)	20000	set bit rate to 20K bps
	30000	set bit rate to 30K bps
	40000	set bit rate to 40K bps
	50000	set bit rate to 50K bps
	64000	set bit rate to 64K bps
	128000	set bit rate to 128K bps
	256000	set bit rate to 256K bps
	512000	set bit rate to 512K bps
	768000	set bit rate to 768K bps
	1000000	set bit rate to 1000K bps
	1500000	set bit rate to 1500K bps
	2000000	set bit rate to 2000K bps
	3000000	set bit rate to 3000K bps
	4000000	set bit rate to 4000K bps
maxframe (r/w)	1	set maximum frame rate to 1 fps
	2	set maximum frame rate to 2 fps
	3	set maximum frame rate to 3 fps
	5	set maximum frame rate to 5 fps
	10	set maximum frame rate to 10 fps
	15	set maximum frame rate to 15 fps
	20	set maximum frame rate to 20 fps
	25	set maximum frame rate to 25 fps
	30 (for 60Hz only)	set maximum frame rate to 30 fps
mode (r/w) (in CMOS version only)	50	synchronize with 50Hz utility
	60	synchronize with 60Hz utility
whitebalance (r/w) (in CMOS version only)	0	auto white balance
	1	fixed indoor(3200K)
	2	fixed fluorescent (5500K)
	3	fixed outdoor(> 5500K)

flip (r/w)	1	flip image
	0	normal image
mirror (r/w)	1	mirror image
	0	normal image
imprinttimestamp (r/w)	1	Overlay time stamp on video
	0	Do not overlay time stamp on video

Group: Audio

NAME	VALUE	DESCRIPTION
type (r/w)	AAC4	set codec to AAC
aacbitrate (r/w)	16000	set AAC bitrate to 16K bps
	32000	set AAC bitrate to 32K bps

Group: Image

NAME	VALUE	DESCRIPTION
brightness (r/w)	<-5 ~ 5>	Adjust brightness of image according to mode settings. <0>
saturation (r/w)	<-5 ~ 5>	Adjust saturation of image according to mode settings. <0>
contrast (r/w)	<-5 ~ 5>	Adjust contrast of image according to mode settings. <0>
hue (r/w)	<-5 ~ 5>	Adjust hue of image according to mode settings. <0>

Group: CAMCTRL

NAME	VALUE	DESCRIPTION
panspeed (r/w)	-5 ~ 5	Pan speed
tiltspeed (r/w)	-5 ~ 5	Tilt speed
zoomspeed (r/w)	-5 ~ 5	Zoom speed

autospeed (r/w)	-5 ~ 5	Auto pan speed
dwelling (r/w)	0 ~ 9999	Time to dwelling when patrol
presetname_<0~9> (r/w)	Text string shorter than 40 characters.	The name of preset location
presetpan_<0~9> (r/w)	-1024 ~ 1024	The pan coordinate of preset location.
presettilt_<0~9> (r/w)	-56 ~ 144	The tilt coordinate of preset location.
patrolname_<0~19> (r/w)	Text string shorter than 40 characters.	The name of patrol location

Group: Motion

NAME	VALUE	DESCRIPTION
enabled (r/w)	0	disable motion detection
	1	enable motion detection
winenabled_<0~2> (r/w)	0	disable motion window #1
	1	enable motion window #1
winname_<0~2> (r/w)	<text string shorter than 14 characters >	name of motion window #1 <blank>
winleft_<0~2> (r/w)	0 ~ 320	Left coordinate of window position. <0>
wintop_<0~2> (r/w)	0 ~ 240	Top coordinate of window position. <0>
winwidth_<0~2> (r/w)	0 ~ 320	Width of motion detection window. <0>
winheight_<0~2> (r/w)	0 ~ 240	Height of motion detection window. <0>

winobjsize_<0~2> (r/w)	0 ~ 100	Percent of motion detection window <0>
winsensitivity_<0~2> (r/w)	0 ~ 100	Sensitivity of motion detection window <0>
update (w)	1	Update the above motion detection settings to take effect

Group: DDNS

NAME	VALUE	DESCRIPTION
enable (r/w)	0, 1	Enable or disable the dynamic dns. <0>
provider (r/w)	1 ~ 6	dyndns.org (dynamic) dyndns.org (custom) tzo.com dhs.org safe100.net dyn-interfree.it <1>
hostname (r/w)	Text string shorter than 127 characters.	Your dynamic hostname. <blank>
usernameemail (r/w)	Text string shorter than 63 characters.	Your user or email to login ddns service provider <blank>
passwordkey (r/w)	Text string shorter than 20 characters.	Your password or key to login ddns service provider <blank>
update (w)	0, 1	Update the above ddns settings to take effect

Group: UPNP

NAME	VALUE	DESCRIPTION
enable (r/w)	0, 1	Enable or disable the UPNP presentation service. <1>

Group: UPNPfor

NAME	VALUE	DESCRIPTION
enable (r/w)	0, 1	Enable or disable the UPNP port forwarding service. <0>

Group: App

NAME	VALUE	DESCRIPTION
scriptname (r)	<text string shorter than 255 characters>	File name of script <script.vssx>
enablescript (r/w)	0	Disable script
	1	Enable script

Group: Syslog

NAME	VALUE	DESCRIPTION
enableremotelog (r/w)	0	disable remote log
	1	enable remote log
serverip (r/w)	<IP address>	Log server IP address
serverport (r/w)	<514>	Server port used for log

Camera Control

Note: This request requires camera control access privilege

Method: GET/POST

Syntax:

```
http://<IT3G320/IT3G320 IP Address>/cgi-bin/camctrl.cgi?
[move=<value>][&focus=<value>]
[&iris=<value>][&speedpan=<value>][&speedtilt=<value>][&speedzoom=<value>]
[&speedapp=<value>][&auto=<value>][&zoom=<value>][&return=<return page>]
```

parameter	value	description
move	home	Move to camera to home position
	up	Move camera up
	down	Move camera down
	left	Move camera left
	right	Move camera right
speedpan	-5 ~ 5	Set the pan speed
speedtilt	-5 ~ 5	Set the tilt speed
speedapp	-5 ~ 5	Set the auto pan/patrol speed
auto	pan	Auto pan
	patrol	Auto patrol
	stop	Stop camera
return	<return page>	Redirect to the <u>page <return page></u> after the parameter is assigned. The <return page> can be a full URL path or relative path according to the current path. If you omit this parameter, it will redirect to an empty page.

Recall

Note: This request requires camera control access privilege

Method: GET

Syntax:

```
http://<IT3G320/IT3G320 IP Address>/cgi-bin/recall.cgi?  
recall=<value>[&return=<return page>]
```

parameter	value	description
recall	Text string less than 30 characters	One of the present positions to recall.
return	<return page>	Redirect to the page <return page> after the parameter is assigned. The <return page> can be a full URL path or relative path according to the current path. If you omit this parameter, it will redirect to an empty page.

Application page CGI command

Note: This request requires administrator privilege.

Method: GET/POST

Syntax:

```
http://<IT3G320/IT3G320                               IP
Address>/cgi-bin/admin/gen-eventd-conf.cgi?[ snapshot_enable=
<value>]
[&weekday=<value>][&time_method=<value>][&begin_time=<value>]
[&end_time=<value>]
[&ss_prefix=<value>][&trigger_type=<value>]
[&md_prenum=<value>][&md_postnum=<value>][&md_delay=<value>]
[&sq_interval=<value>]
[&send_method=<value>][&ftp_suffix=<value>]
```

Return:

```
HTTP/1.0 200 OK\r\n
Content-Type: text/plain\r\n
Content-Length: <length>\r\n
\r\n
<depends on method value>
If(method == get || method == set)
{
  tue=<value>\r\n
  wed=<value>\r\n
  ...
}
Else if(method == normal)
{
  Application page contents
```



```
}

```

parameter	Value	description
snapshot_enable	0	Enable snapshot application
	1	Disable snapshot application
weekday	<i>0,1,2,3,4,5,6</i>	The array indicate weekly schedule
time_method	<i>always</i>	24 hours full day
	<i>interval</i>	Select begin time and end time
begin_time	<i>hh:mm</i>	Begin time of weekly schedule
end_time	<i>hh:mm</i>	End time of weekly schedule
ss_prefix	<i><text string shorter than 60 characters></i>	Snapshot file name prefix for both event and sequential operation
trigger_type	<i>motion</i>	Set trigger by motion detect
	<i>sequential</i>	Snapshot sequentially
md_win	<i>0,1,2</i>	The array indicate which motion windows are used
md_prenum	<i>1~5</i>	The numbers of snapshot before event
md_postnum	<i>1~5</i>	The numbers of snapshot after event
md_delay	<i>1~999</i>	The delay seconds for detecting next motion event
sq_interval	<i>1~999</i>	The interval seconds of sequential snapshot
send_method	<i>mail</i>	Send snapshot by mail
	<i>ftp</i>	Send snapshot by ftp
ftp_suffix	<i>0/1</i>	Enable/Disable file name prefix

Capture single snapshot

Note: This request require normal user privilege

Method: GET/POST

Syntax:

```
http://<IT3G320/IT3G320 IP Address>/cgi-bin/video.jpg
```

Server will return the most up-to-date snapshot in JPEG format. The size and quality of image will be set according to the video settings on the server.

Return:

```
HTTP/1.0 200 OK\r\n
Content-Type: image/jpeg\r\n
[Content-Length: <image size>\r\n]
<binary JPEG image data>
```

Account management

Note: This request requires administrator privilege

Method: GET/POST

Syntax:

```
http://<IT3G320/IT3G320 IP Address>/cgi-bin/admin/editaccount.cgi?
method=<value>&username=<name>[&userpass=<value>][&privilege=<value>
]
[&privilege=<value>][...][&return=<return page>]
```

parameter	value	Description
method	add	Add an account to server. When using this method, "username" field is necessary. It will use default value of other fields if not specified.
	delete	Remove an account from server. When using this method, "username" field is necessary, and others are ignored.
	edit	Modify the account password and privilege. When using this method, "username" field is necessary, and other fields are optional. If not specified, it will keep original settings.
username	<name>	The name of user to add, delete or edit
userpass	<value>	The password of new user to add or that of old user to modify. The default value is an empty string.
privilege	<value>	The privilege of user to add or to modify. The privilege can be the addition of the following values. Ex: A user with configure access can be assigned privilege as privilege=conf .
	conf	configuration privilege
return	<return page>	Redirect to the page <return page> after the parameter is assigned. The <return page> can be a full URL path or relative path according the the current path. If you omit this parameter, it will redirect to an empty page.

System logs

Note: This request require administrator privilege

Method: GET/POST

Syntax:

```
http://<IT3G320/IT3G320 IP Address>/cgi-bin/admin/syslog.cgi
```

Server will return the up-to-date system log.

Return:

```
HTTP/1.0 200 OK\r\nContent-Type: text/plain\r\nContent-Length: <syslog length>\r\n\r\n<system log information>\r\n
```

Configuration file

Note: This request requires administrator privilege

Method: GET/POST

Syntax:

```
http://<IT3G320/IT3G320 IP Address>/cgi-bin/admin/configfile.cgi
```

Server will return the up-to-date configuration file.

Return:

```
HTTP/1.0 200 OK\r\n
Content-Type: text/plain\r\n
Content-Length: <configuration file length>\r\n
\r\n
<configuration data>\r\n
```

Upgrade firmware

Note: This request requires administrator privilege

Method: POST

Syntax:

```
http://<IT3G320/IT3G320 IP Address>/cgi-bin/admin/upgrade.cgi
```

Post data:

```
fimage=<file name>[&return=<return page>]\r\n
\r\n
<multipart encoded form data>
```

Server will accept the upload file named <file name> to be upgraded the firmware and return with <return page> if indicated.

D. Technical specifications

- System

RAM: 32MB SDRAM
ROM: 4MB FLASH ROM

- Networking

Protocol

TCP/IP, HTTP, SMTP, FTP, DDNS,
UPnP, Telnet, NTP, DNS, DHCP
and RTSP

Physical

10 baseT or 100 baseT Fast
Ethernet auto negotiation

WLAN (IT3G320W Wireless Model Only)

802.11g wireless LAN

- Video

Algorithm supported

MPEG4(simple profile) for
streaming video
JPEG for still image

Features

Adjustable image size, quality
and bit rate
Time stamp and text overlay
3 motion detection windows

Resolution

Up to 30/25 frames at 160x120
Up to 30/25 frames at 320x240
Up to 30/25 frames at 640x480

- Camera Specification

1/4 inch color CMOS sensor
Resolution: 640x480
1.5Lux/F2.0
AGC, AWB, AES
Electronic shutter: 1/60 ~
1/15000 second

- Audio

AAC

- Microphone

Omni-directional
Frequency: 50 – 16000Hz
S/N ratio: more than 60dB

- LED indicator

Three color LEDs

- Dimension

100mm(D) * 110mm(W) * 100mm(H)

- Weight

NET. 240g (Wired Model)
NET. 250g (Wireless Model)

- Power

Input: 100-240VAC, 50/60Hz, 0.5A
Output: 12VDC, 1.5A
Consumption: Max 7 W

- Operating Environment

Temperature: 0-50°C/32-122°F
Humidity: 95%RH

- EMI & Safety

CE, FCC

- Viewing system requirement

Operating system

Microsoft Windows 98SE/ME/2000/XP

Browser

Internet Explorer 5.x or above

- Lens

Fixed focal with fine tuning, 4.0mm, F2.0

Technology License Notice

MPEG-4 AAC Technology

This product includes MPEG-4 AAC audio coding technology licensed by Via Licensing. Please refer to <http://www.vialicensing.com/> for more details.

MPEG-4 Visual Technology

This product includes one MPEG-4 encoder and one MPEG-4 decoder license. Installation of more than one decoder is prohibited. Please contact your reseller to purchase additional decoder licenses.

THIS PRODUCT IS LICENSED UNDER THE MPEG-4 VISUAL PATENT PORTFOLIO LICENSE FOR THE PERSONAL AND NON-COMMERCIAL USE OF A CONSUMER FOR (i) ENCODING VIDEO IN COMPLIANCE WITH THE MPEG-4 VISUAL STANDARD ("MPEG-4 VIDEO") AND/OR (ii) DECODING MPEG-4 VIDEO THAT WAS ENCODED BY A CONSUMER ENGAGED IN A PERSONAL AND NONCOMMERCIAL ACTIVITY AND/OR WAS OBTAINED FROM A VIDEO PROVIDER LICENSED BY MPEG LA TO PROVIDE MPEG-4 VIDEO. NO LICENSE IS GRANTED OR SHALL BE IMPLIED FOR ANY OTHER USE. ADDITIONAL INFORMATION INCLUDING THAT RELATING TO PROMOTIONAL, INTERNAL AND COMMERCIAL USES AND LICENSING MAY BE OBTAINED FROM MPEG LA, LLC. SEE [HTTP://WWW.MPEGLA.COM](http://www.mpegla.com).

Electromagnetic Compatibility (EMC)

This device complies with FCC Rules Part 15. Operation is subject to the following two conditions.

- This device may not cause harmful interference, and
- This device must accept any interference received, including interference that may cause undesired operation.

USA - This equipment has been tested and found to comply with the limits for a Class B digital device, pursuant to Part 15 of the FCC Rules. These limits are designed to provide reasonable protection against harmful interference in a residential installation. This equipment generates, uses and can radiate radio frequency energy and, if not installed and used in accordance with the instructions, may cause harmful interference to radio communications. However, there is no guarantee that interference will not occur in a partial installation. If this equipment does cause harmful interference to radio or television reception, which can be determined by turning the equipment off and on, the user is encouraged to try to correct the interference by one or more of the following measures:

- Reorient or relocate the receiving antenna.
- Increase the separation between the equipment and receiver.
- Connect the equipment into an outlet on a circuit different from that to which the receiver is connected.
- Consult the dealer or an experienced radio/TV technician for help.

Shielded interface cables must be used in order to comply with emission limits.

Europe **CE** - This digital equipment fulfills the requirement for radiated emission according to limit B of EN55022/1998, and the requirement for immunity according to EN50082-1/1992.

Liability

Intellisystem Technologies S.r.l. cannot be held responsible for any technical or typographical errors and reserves the right to make changes to the product and manuals without prior notice. Intellisystem Technologies S.r.l. makes no warranty of any kind with regard to the material contained within this document, including, but not limited to, the implied warranties of merchantability and fitness for a particular purpose. All other company names and products are trademark or registered trademarks of their respective companies.

Form any question and support please contact:

Intellisystem Technologies S.r.l.

Support: info@intellisystem.it

Web Site: <http://www.intellisystem.it>