



IT350W Network Camera with Pan/Tilt/Zoom

Quick Installation Guide

This guide describes the basic functions of IT350W Network Camera.

All detailed information is described in the user's manual.

**Warning Before Install**

- Power off the Network Camera as soon as it is found smoking or smelt unusual.



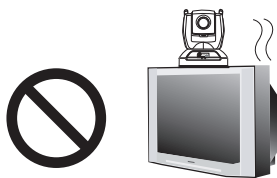
Contact your distributor when such cases happen.

- Keep the Network Camera away from the water. If the Network Camera is wet, power off immediately.

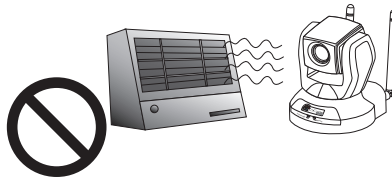


Contact your distributor when such cases happen.

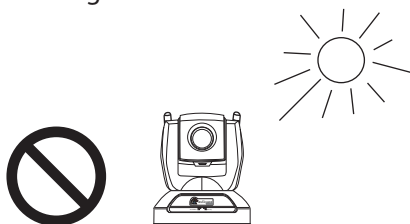
- Do not place the Network Camera around the heat sources, such as television or oven.



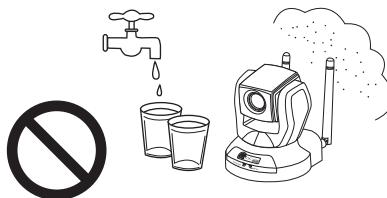
- Refer to your user's manual for the operating temperature.



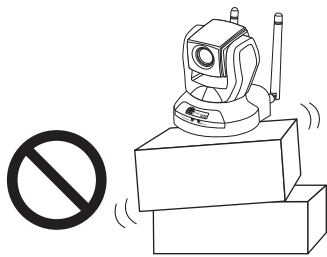
- Keep the Network Camera away from the direct sunlight.



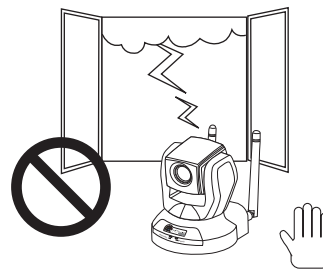
- Do not place the Network Camera in high humid environments.



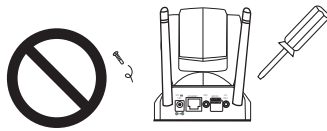
- Do not place the Network Camera on unsteady surfaces.



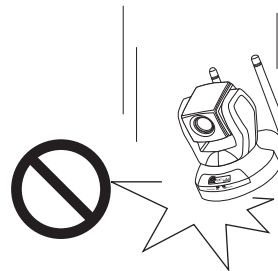
- Do not touch the Network Camera when it's lightning.



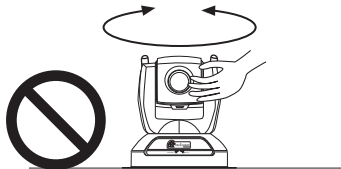
- Do not disassemble the Network Camera.



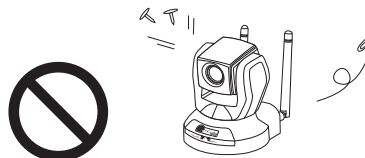
- Do not drop the Network Camera.



- Do not manually pan and tilt the Network Camera when the power is on.

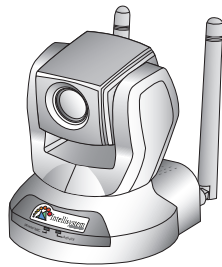


- Do not insert any object into the Network Camera, such as needles.

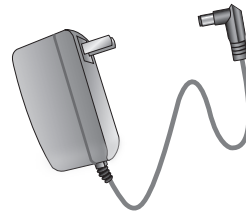


1 Check package contents

● Network Camera



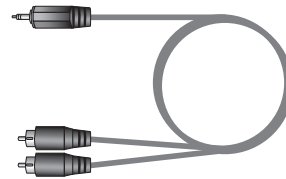
● Power adapter



● Camera stand



● A/V cable



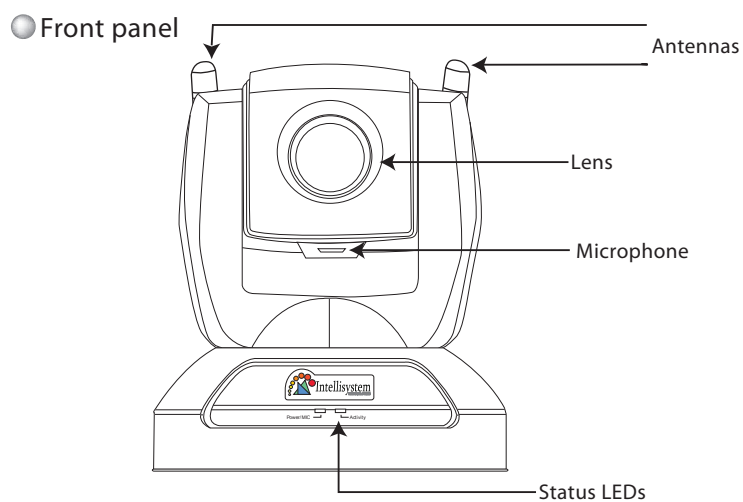
● Software CD



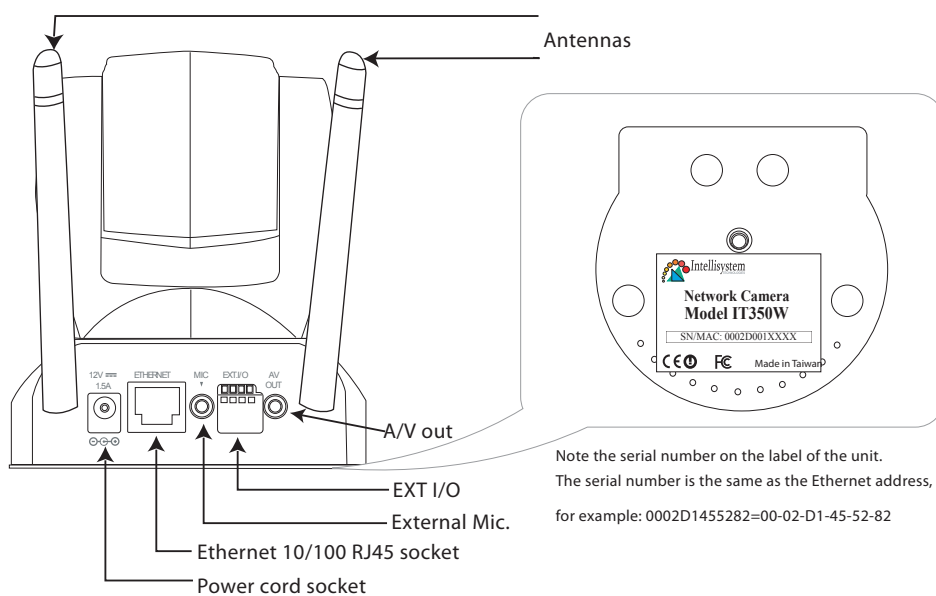
● Remote controller



2 Physical description

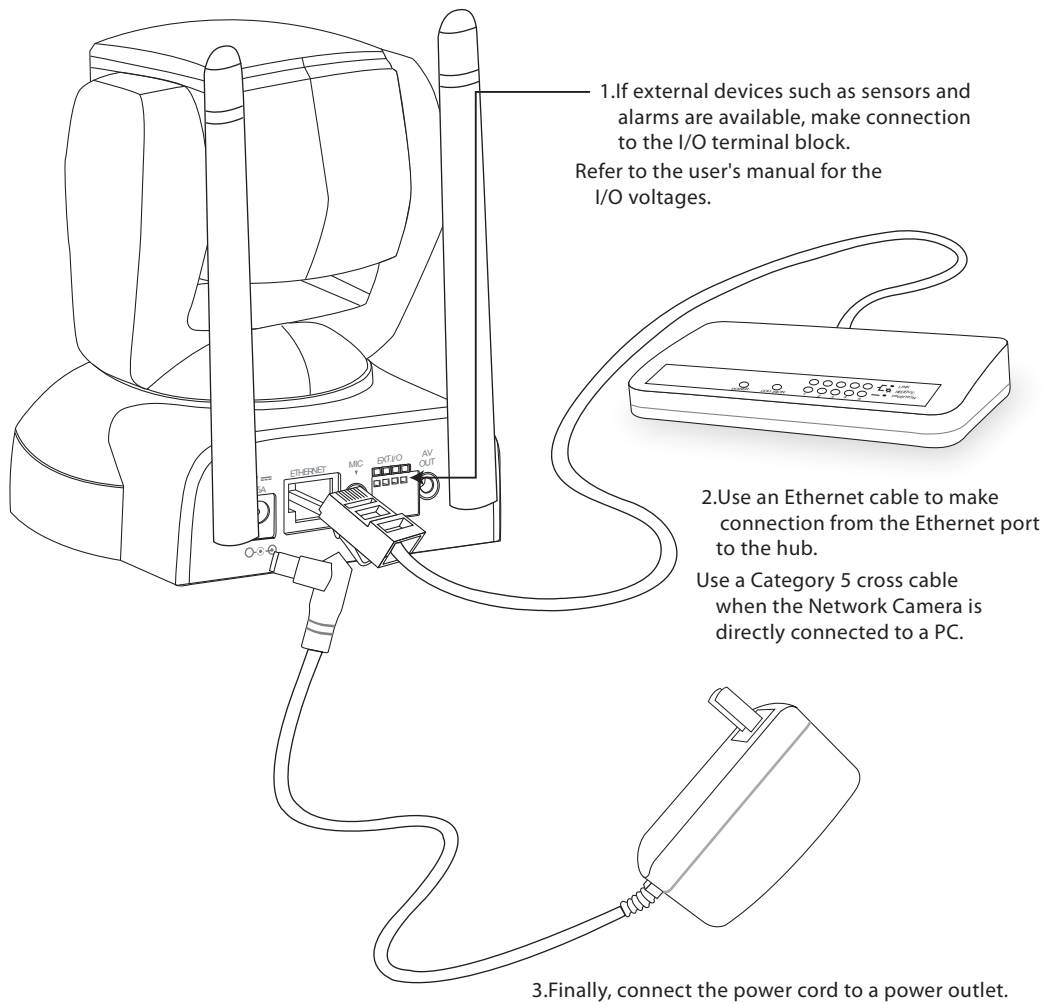


● Rear panel



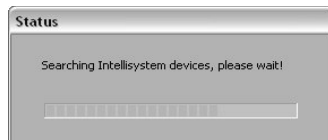
Intellisystem Technologies S.r.l. - <http://www.intellisystem.it>


3 Install the Network Camera in Ethernet network



4 Assign IP address

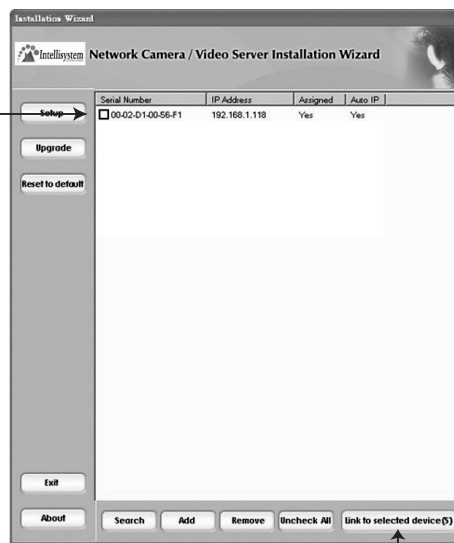
- 1.Run the "Network Camera Wizard" under "Utility" directory on the software CD.
- 2.The program will search Video Servers or Network Cameras on the same LAN.



- 3.After searching, the main installer window will pop up. Click on the serial number that matches the one you just noted from 

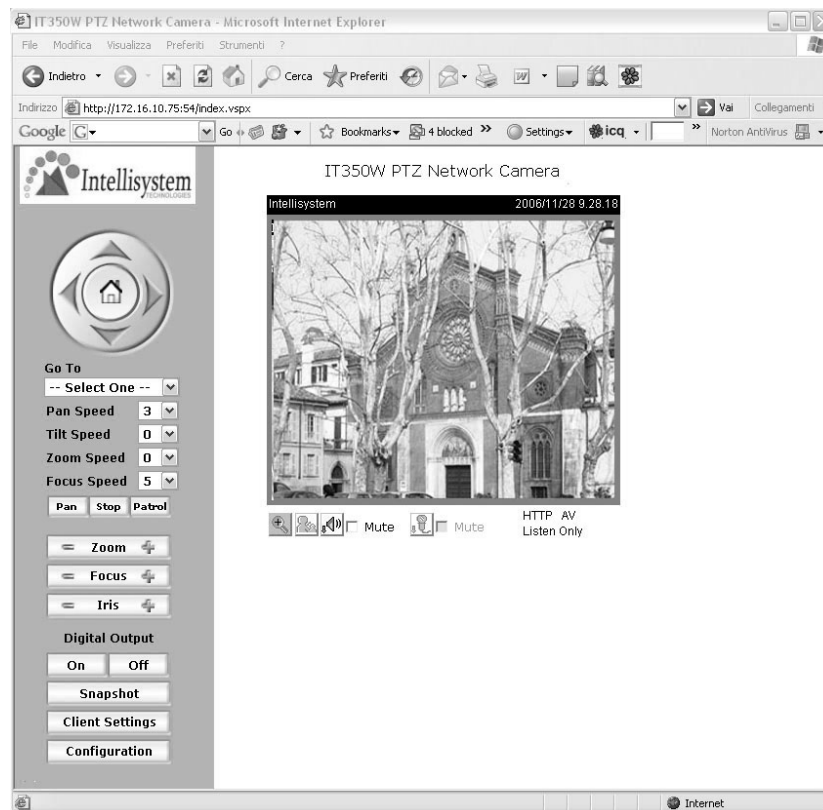
- 4.Click "Link to selected device(s)" to connect the Internet Explorer to the Network Camera.

If there is no DHCP server on the LAN, please refer to the user's manual for the methods of assigning an IP address.



5

The Internet Explorer Connects to the Network Camera



For further setup, please check the user's manual on the software CD.