



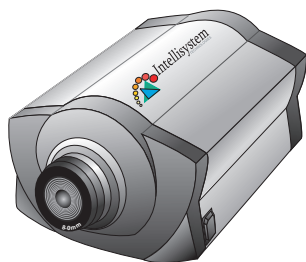
Network Camera IT210

Quick Installation Guide

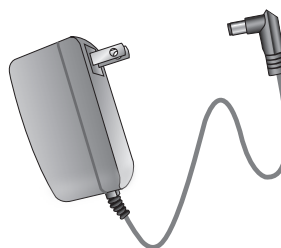
This guide describes the basic functions of IT210. All detailed information is described in the user's manual.

1 Checking Package Contents

● IT210



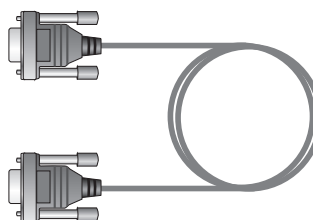
● Power adapter



● Camera stand



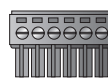
● Null modem cable



● Utility CD-ROM

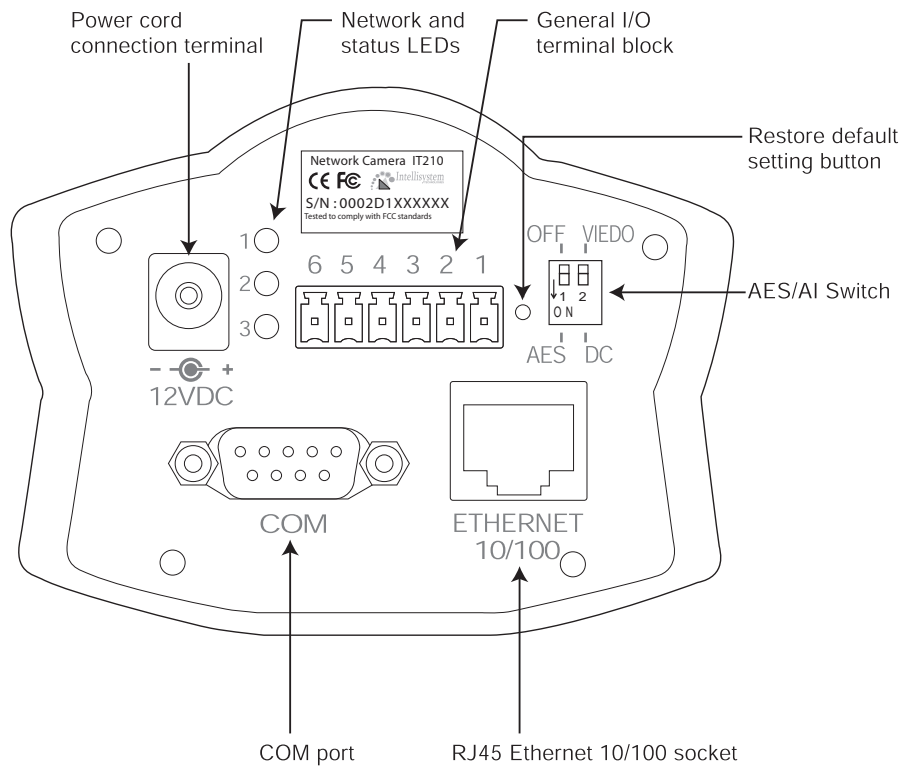


● I/O connector



● Warranty card

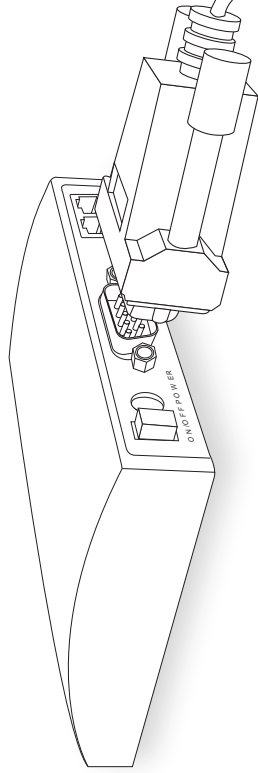
2 Physical Description



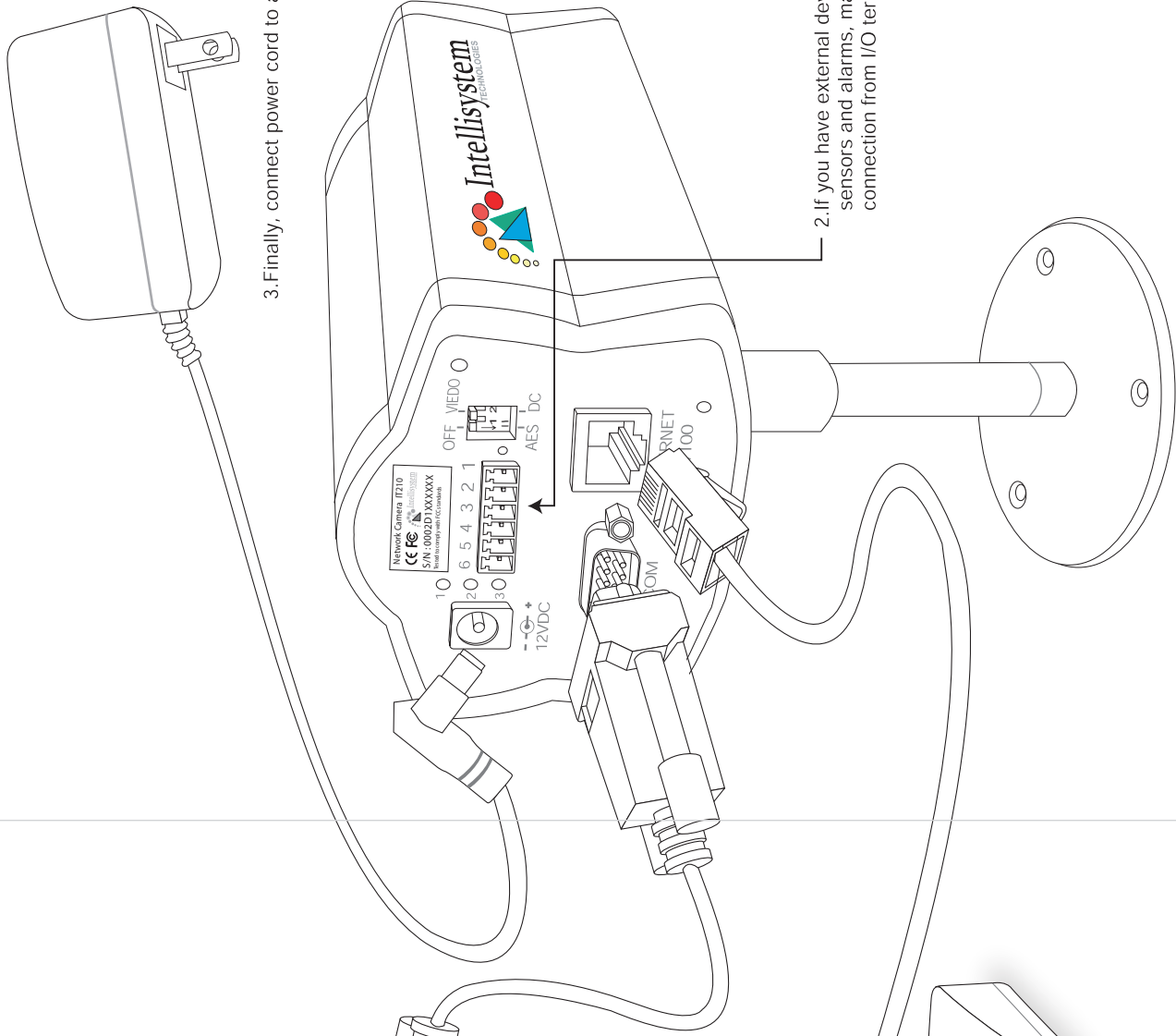
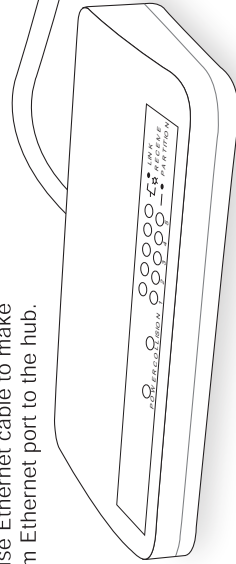
3 Making Connections

● Installing your server to an Ethernet network

1-a. If you have only modem, make connection from COM port to your modem.



1-b. If you want to install your server on LAN environment, use Ethernet cable to make connection from Ethernet port to the hub.

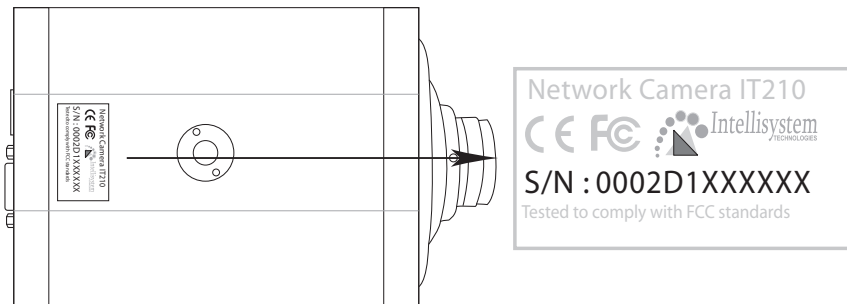


3. Finally, connect power cord to a power outlet

2. If you have external devices such as sensors and alarms, make connection from I/O terminal block

4 IP address setting for VisualServer

A Note the serial number from the label on the unit.



This serial number is same as Ethernet address, for example: 0002D1100052=00-02-D1-10-00-52

B Assign IP address

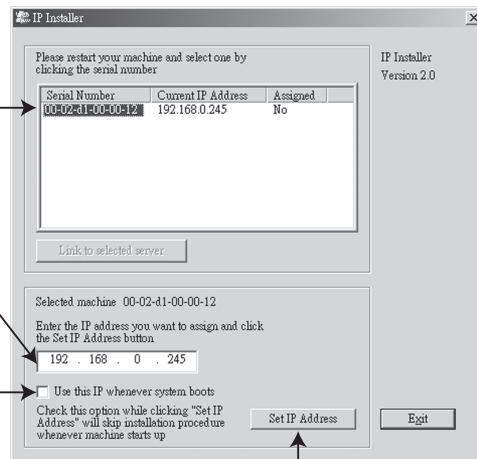
Using Installer program

1.Run the Installer.exe first, and power on the Video Server

2.Click on serial number that matches the one you just note

3.Assign a free IP address

4.If you want to fix the IP address of the unit, check the option "Use this IP whenever system boots"



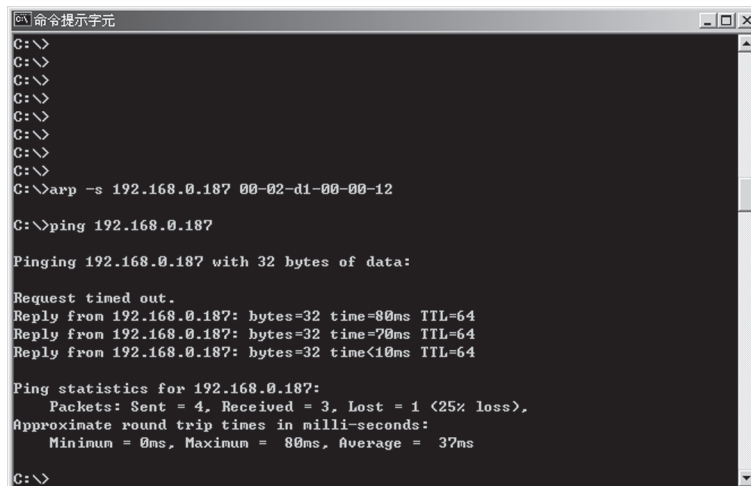
5.Click "Set IP Address" to start installation process

● Using Dos command in Windows

Start a DOS window and type the following command

Syntax :

```
arp -s <Server IP address> <Ethernet address>  
ping <Server IP address>
```

Example :

```
命令提示符  
C:\>  
C:\>  
C:\>  
C:\>  
C:\>  
C:\>  
C:\>  
C:\>  
C:\>  
C:\>  
C:\>arp -s 192.168.0.187 00-02-d1-00-00-12  
C:\>ping 192.168.0.187  
Pinging 192.168.0.187 with 32 bytes of data:  
Request timed out.  
Reply from 192.168.0.187: bytes=32 time=80ms TTL=64  
Reply from 192.168.0.187: bytes=32 time=70ms TTL=64  
Reply from 192.168.0.187: bytes=32 time<10ms TTL=64  
Ping statistics for 192.168.0.187:  
Packets: Sent = 4, Received = 3, Lost = 1 (25% loss),  
Approximate round trip times in milli-seconds:  
Minimum = 0ms, Maximum = 80ms, Average = 37ms  
C:\>
```

1.Type arp command and press enter

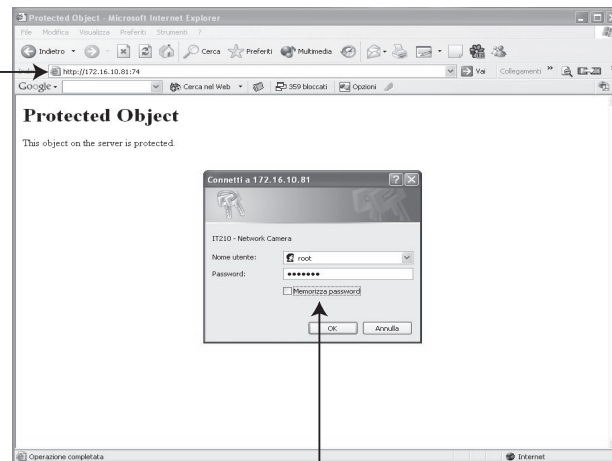
2.Type ping command and press enter

3.If you see the reply message, the unit has been installed successfully

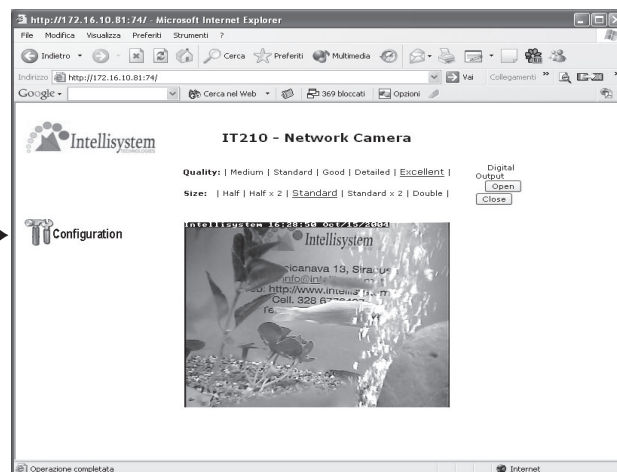
5 Start the Internet Explorer for verifying your installation

1. Type the IP address and press enter

At the initial access to the "Connection Type" page, the web browser will ask for a new plug-in installation, the plug in being Network Camera. This plug-in has been registered for certification and can be used to change the parameters at the client's site. The user may click on to install the plug-in. If the web browser does not allow the user to complete the installation, check the Internet security in order to set on your web browser to "Ask confirmation for download ActiveX control without electronic Signature" and so refresh the current web page. If the problem persist please contact your IT or networking supervisor.



2. Type "root" as user name and the serial number as password, then press enter or click ok



3. Click the configuration for further installation

For detail information on further configuration, see user's manual on the CD.