



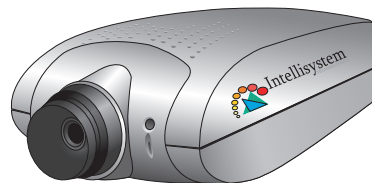
Network Camera IT150W

Quick Installation Guide

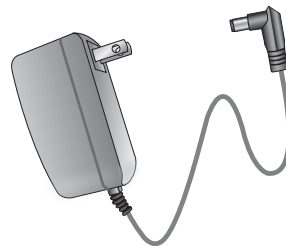
This guide describes the basic functions of IT150W. All detailed information is described in the user's manual.

1 Checking Package Contents

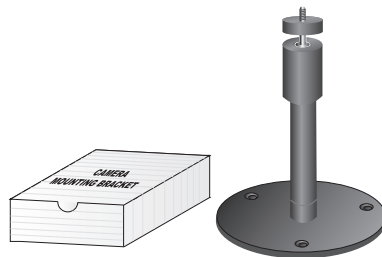
● IT150W



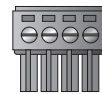
● Power adapter



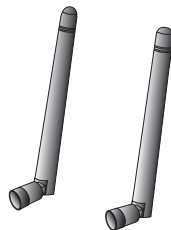
● Camera stand



● I/O connector (attached)



● Antenna



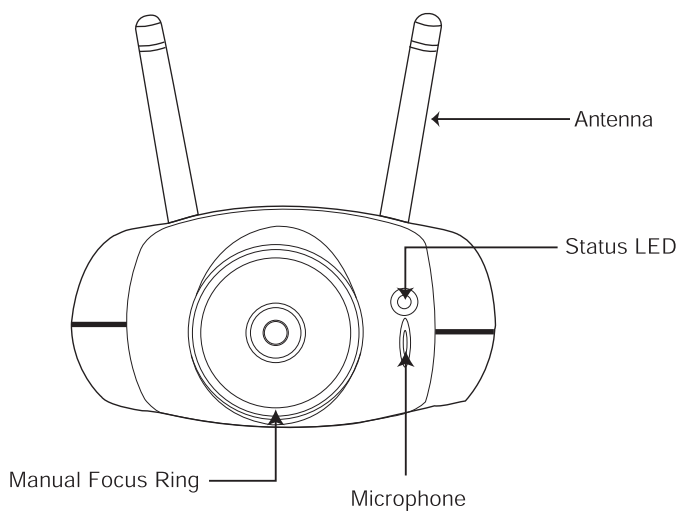
● Utility CD-ROM



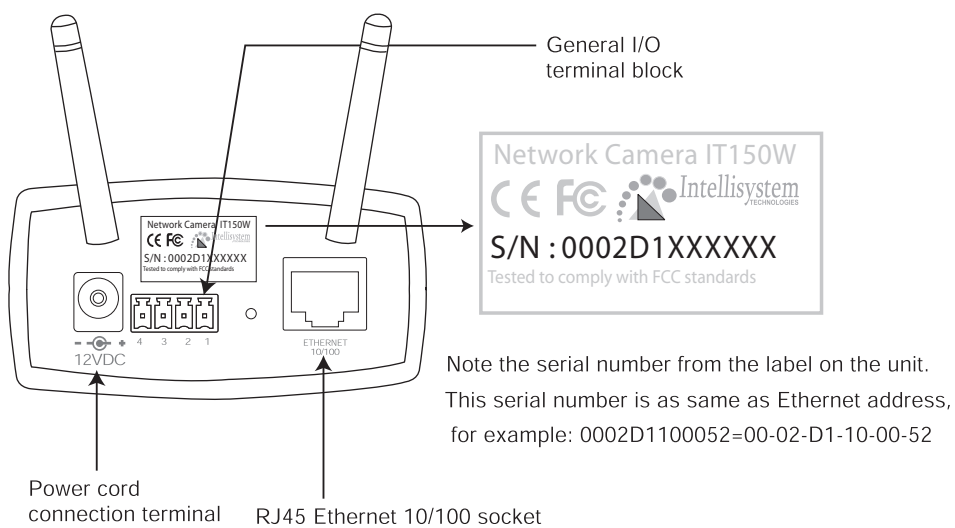
● Warranty card

2 Physical Description

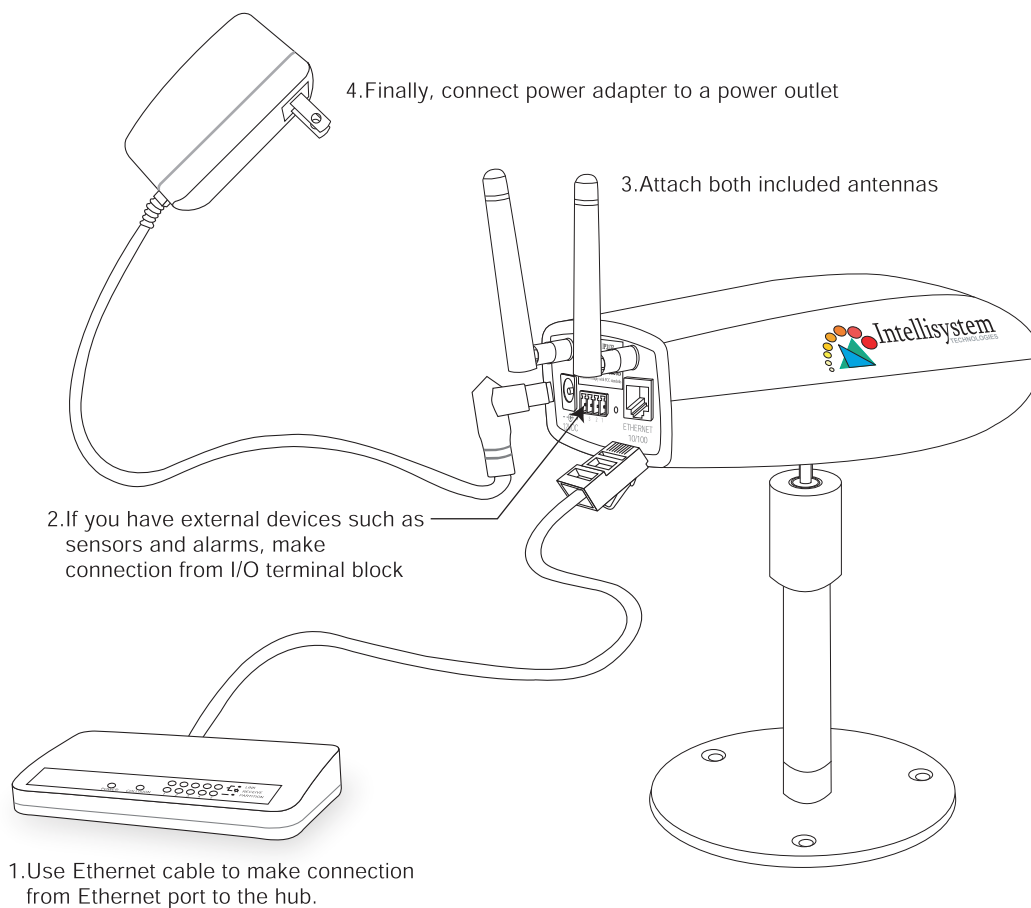
● Front Panel



● Back Panel



3 Installing your Network Camera to Ethernet network

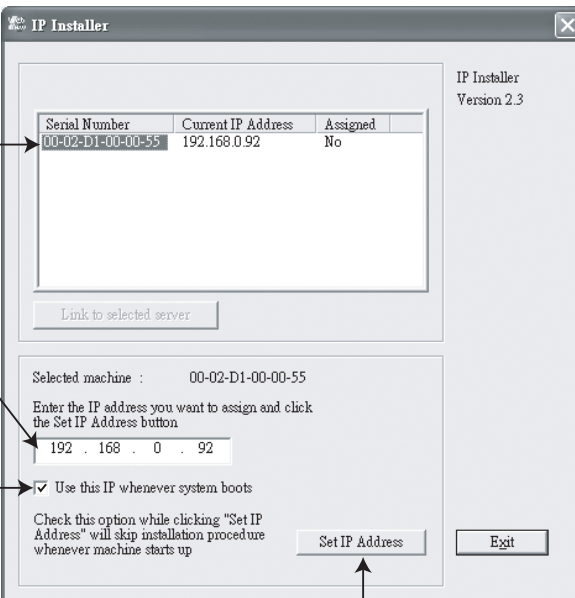


* Use Category 5 Cross Cable when Network Camera is directly connected to PC.

Intellisystem Technologies - <http://www.intellisystem.it>

4 Assign IP address

1.Run the Installer from CD-ROM first, and power on Network Camera



2.Click on serial number that matches the one you just note

3.Assign a free IP address

4.If you want to fix the IP address of the unit, check the option "Use this IP whenever system boots"

* While using Network Camera in wireless LAN, you must check this option

5.Click "Set IP Address" to start installation process

The screenshot shows the 'IP Installer' window with the following details:

- Table with columns: Serial Number, Current IP Address, Assigned.
- Selected machine: 00-02-D1-00-00-55
- IP address input field: 192 . 168 . 0 . 92
- Checked checkbox: Use this IP whenever system boots
- Buttons: Set IP Address, Exit

* While using Network Camera in Ethernet only, go directly to 7

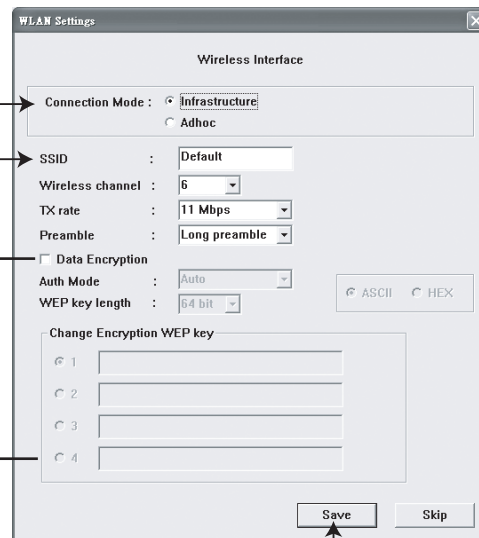
5 Configuring wireless LAN

1. Select wireless LAN mode

2. The default SSID is "Default", type the same SSID with your AP or Adhoc master

3. Enter the same settings of Data Encryption as AP or Adhoc master

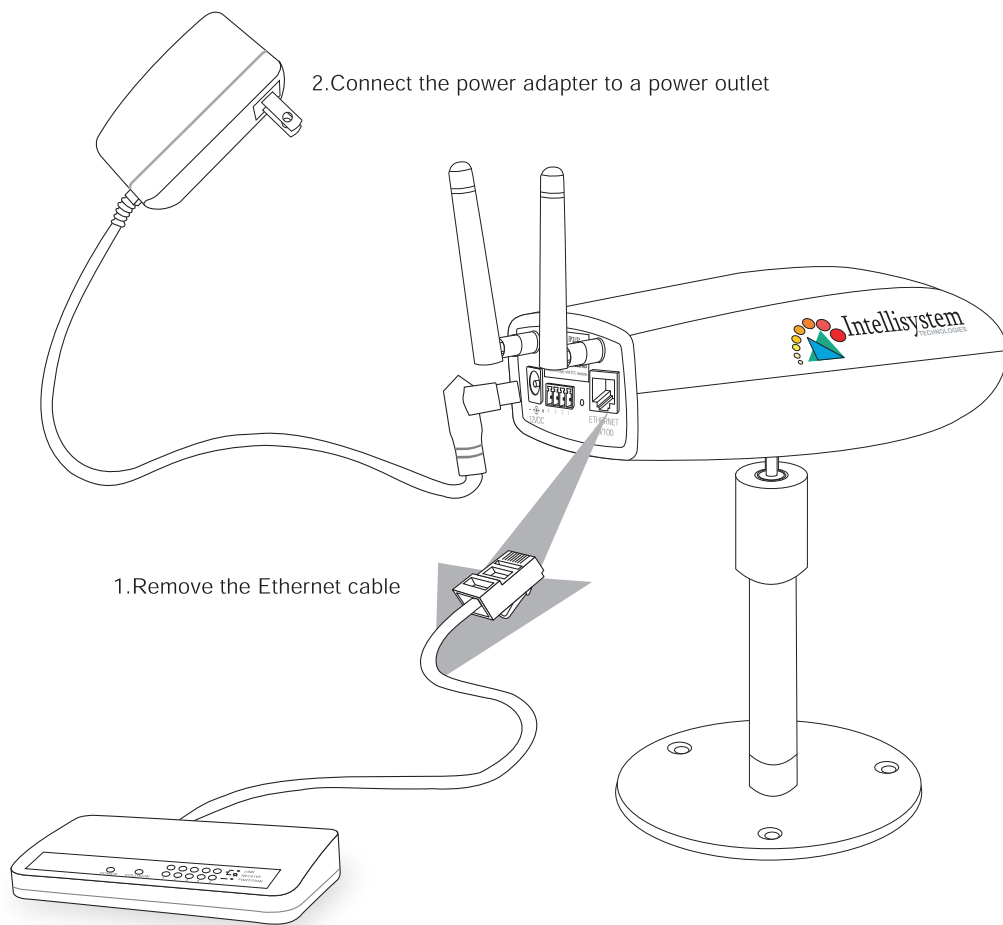
4. Click "Save" to proceed installation process




Serial Number	Current IP Address	Assigned
00-02-D1-00-00-55	192.168.0.92	No

5. After installation is OK, unplug the power adapter and make sure AP or Adhoc master is running

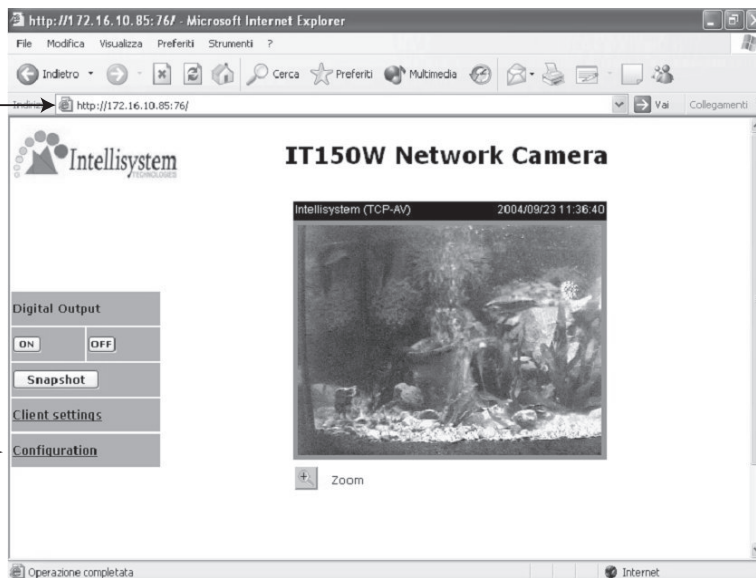
6 Installing your Network Camera to wireless LAN



7 Open Internet Explorer to verify your installation

At the initial access to the "Connection Type" page, the web browser will ask for a new plug-in installation, the plug in being Network Camera. This plug-in has been registered for certification and can be used to change the parameters at the client's site. The user may click on to install the plug-in. If the web browser does not allow the user to complete the installation, check the Internet security in order to set on your web browser to "Ask confirmation for download ActiveX control without electronic Signature" and so refresh the current web page. If the problem persist please contact your IT or networking supervisor.

1. Type the IP address from  and press enter



2. Congratulations! You have been able to connect Network Camera. It is highly recommended to click "Configuration" for further installation

For detail information on further configuration, see user's manual on the CD-ROM.